



# PUDU CC1

## Clean & Clever, Four-in-1

Global Leading Robotics Company





# Content

## About PUDU CC1

---

**01**

**Product Overview**

**02**

**Product Advantages**

**03**

**Product Values**

**04**

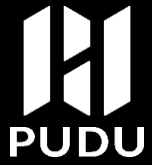
**About Pudu**

## PUDU CC1

### Intelligent Commercial Cleaning Robot

- Stable efficiency and higher quality of cleaning
- Lower recruitment, training and management costs
- Reduce employee injuries and absences
- Easily deal with custodial inspections with digital reports





# Product Overview



<b>Machine Dimension</b>	663*568*682mm
<b>Machine weight</b>	60kg
<b>Sweeping Width</b>	500mm
<b>Scrubbing Width</b>	400mm
<b>Water Tank Capacity</b>	Clean Water Tank 15L Waste Water Tank 17L
<b>Charging Time</b>	< 4h
<b>Run-time</b>	Max 9h
<b>Cleaning Efficiency</b>	700-1000m <sup>2</sup> /h
<b>Cleaning Operating Noise</b>	< 70dB
<b>Cruise Speed</b>	Max 1.2m/s
<b>Local Interaction</b>	10.1-inch touch screen
<b>Positioning Method</b>	Visual + Laser Positioning



# Content

## About PUDU CC1

---

**01**

**Product Overview**

**02**

**Product Advantages**

**03**

**Product Values**

**04**

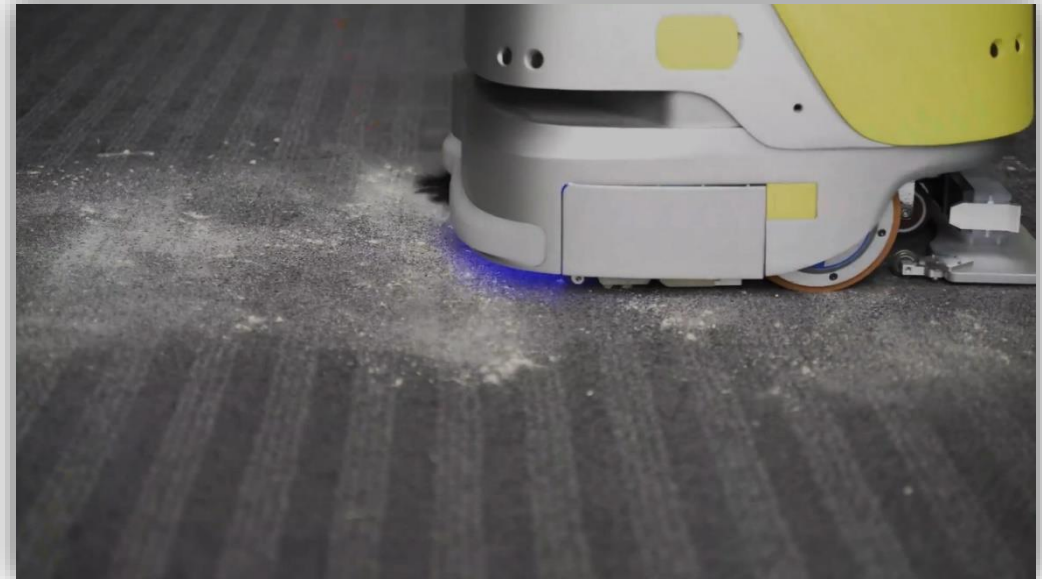
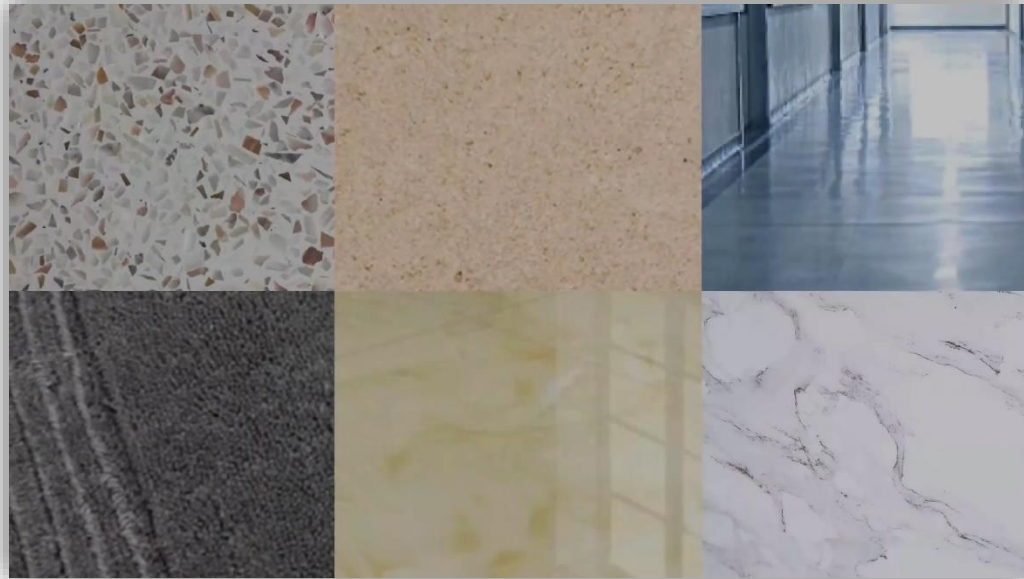
**About Pudu**

## Four-in-one Versatile Cleaning



- **Sweeping, Scrubbing, Vacuuming and Mopping** multi-function in one. All cleaning needs can be easily met by one machine.
- **Two cleaning modes:**
  1. Sweeping + Vacuuming + Mopping
  2. Scrubbing
- **Modular Component Design:** Remove the accessory is no longer a tedious task, but a fast and efficient one. Accessories (such as side brush , roller brush , squeegee, mopping sweeper) can be loaded and unloaded within **1 minute**.

## Suit Various Floor Types



- Suitable for indoor floors with **different materials and hardness**:
- **Hard floor**: Nature Stone, Terrazzo, marble, floor tile, epoxy resin, sandstone, artificial stone flooring, etc.
- **Soft floor**: low pile carpet

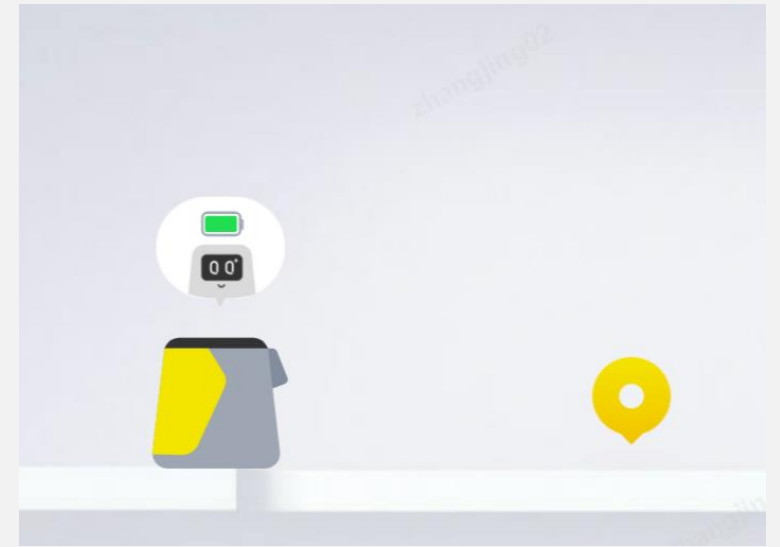
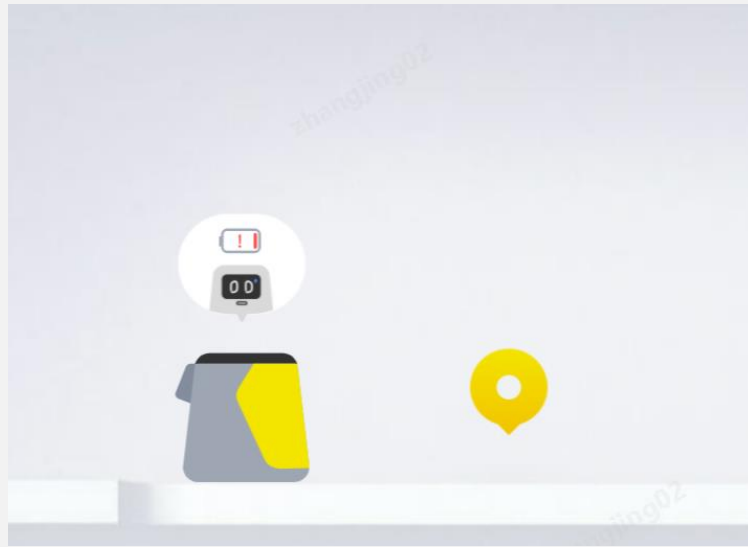
## Fit Corners Perfectly



- **Ultimate edge cleaning(< 6cm edge to edge)** in certain scenes with side brush. It performs edge sweeping well with no trash left behind.



## Breakpoint Resume Cleaning



- When the power is low and cleaning task is not completed, the robot can **remember the cleaning progress and resume the previous unfinished task** after fully recharged.

## Automatic Water Addition & Drainage



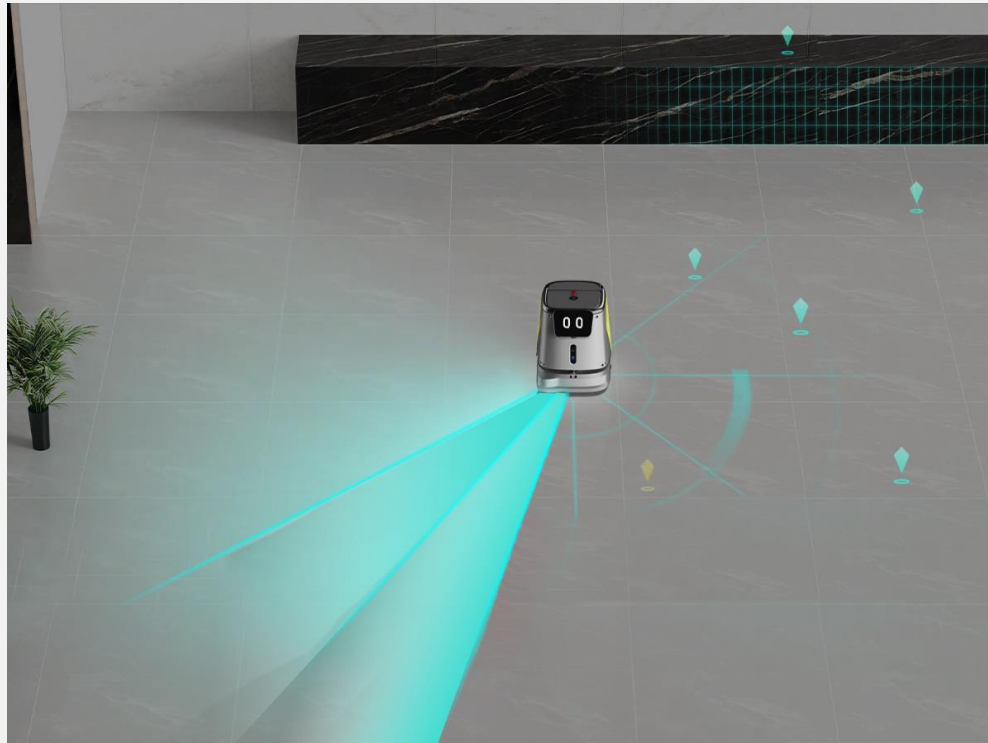
- **Large Capacity: 15L clean water tank and 17L waste water tank** with an exclusive workstation
- **Automatically fill and drain the water** at the workstation\*
- No manual intervention, worry-free and labor-saving

## Automatic Recharging



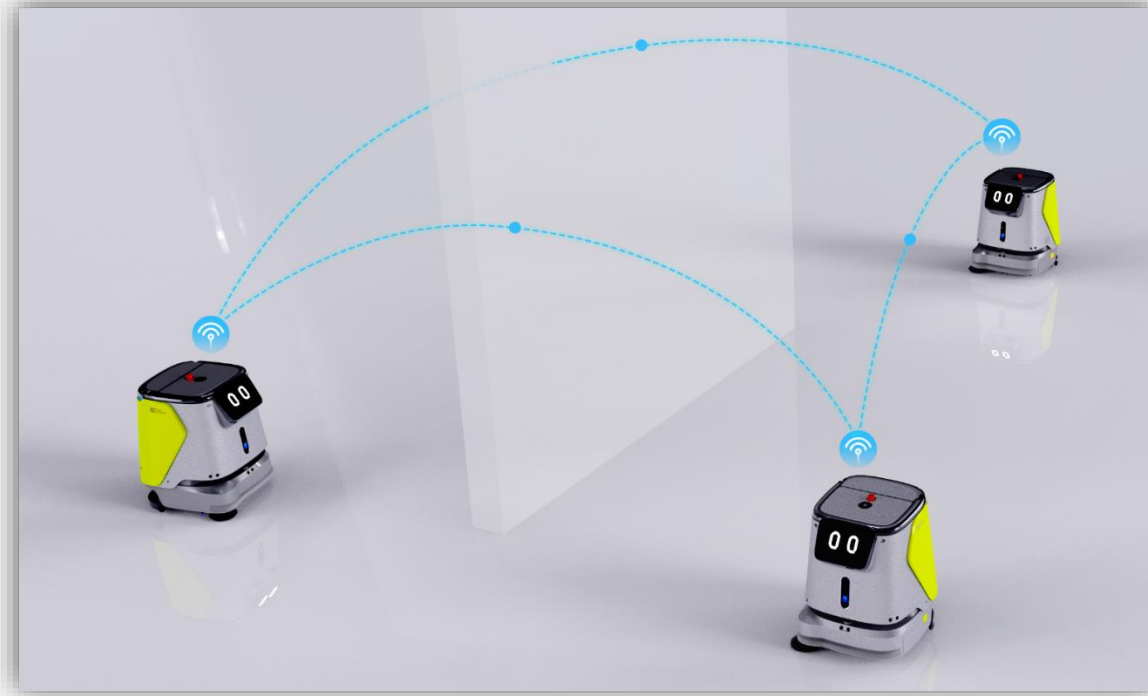
- **The robot will automatically return to the charging pile\*** when the power is low.

## Automatic Location & Navigation



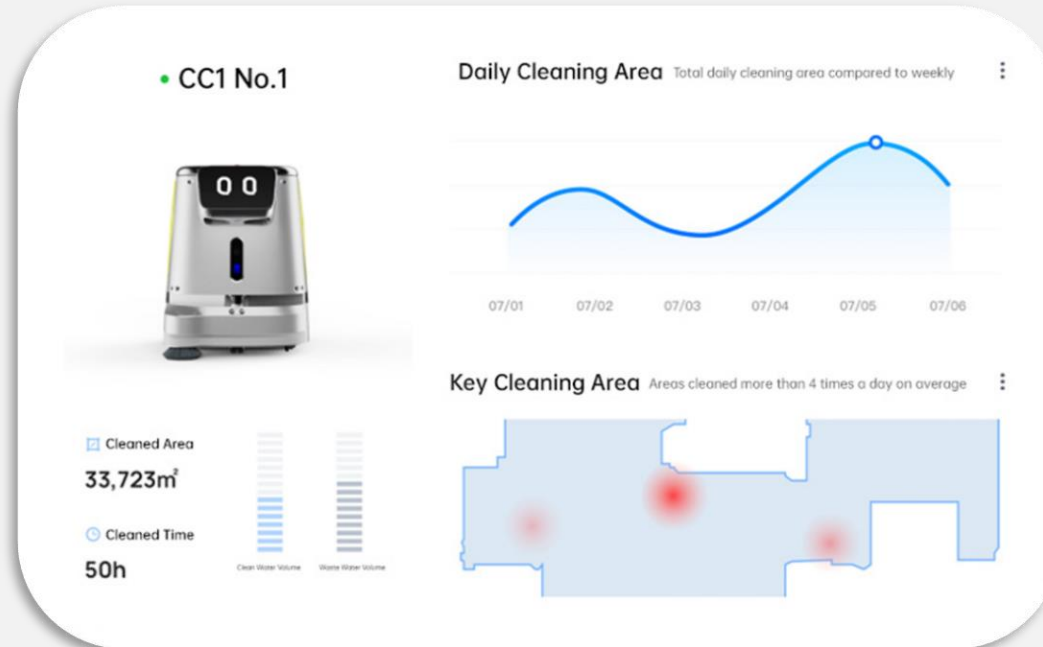
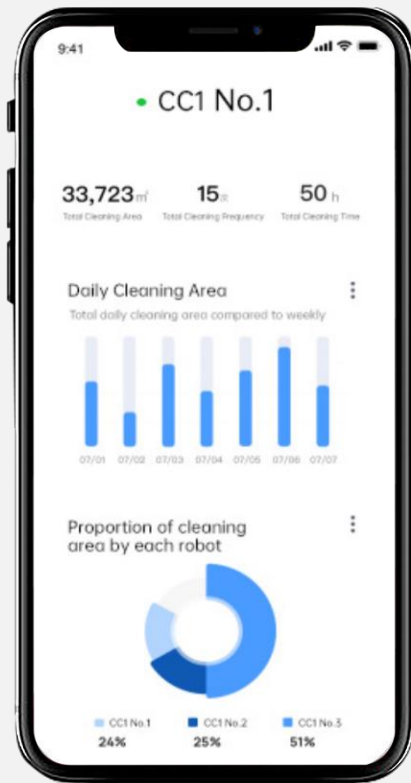
- Based on PUDU SLAM positioning system, CC1 supports both **Visual SLAM** and **laser SLAM** positioning and navigation solutions to perform tasks more efficiently in complex scenarios.
- Equipped with **Multi-fusion sensors**, it can stop at any angle and move away as soon as it encounters obstacles.

## Multi-machine Intelligent Scheduling



- Based on PUDU Scheduler technology, it supports **multi-machine intelligent scheduling** and realizes **multi-machine collaborative operation**, **automatic replacement**, **multi-machine to multi-workstation** and other functions, and realizes the systematic operation of robots in office buildings/residential buildings.

## Digital Cleaning



- **Remote operation via APP**, work status can be checked at any time.
- **Get real-time notifications for cleaning performance**, such as cleaning time and cleaning area,
- **Digitization and visualization of cleaning effects**: Collect and summarize the working status of each unit, **automatically generate cleaning report**



# Content

## About PUDU CC1

---

**01**

**Product Overview**

**02**

**Product Advantages**

**03**

**Product Values**

**04**

**About Pudu**



- **Easy to install:** robot operation with pre-set program is able to start to work immediately
- Stable cleaning efficiency and **higher quality of cleaning**



- Reduce potential employee injuries and absences, improve the service experience
- Redeploy labor: **Employee can focus on more complex responsibilities**, ensuring more productivity.



- **Lower** recruitment, training and management **costs**



- With **digital records and reports**, custodial inspections can be easily dealt with, and work status can be optimized.





# Usage Scenarios



Office Building



Education



Retail



Food & Beverage



Public Transportation



Health Care



Manufacturing



Hospitality



# Content

## About PUDU CC1

---

**01**

**Product Overview**

**02**

**Product Advantages**

**03**

**Product Values**

**04**

**About Pudu**

# Pudu Robotics



Shenzhen-based and founded in 2016, Pudu Robotics is a world-leading tech-focused enterprise dedicated to the design, R&D, production and sales of commercial service robots on a mission to use robots to improve the efficiency of human production and living.

Since its inception, Pudu Robotics has heavily invested in R&D, obtained multiple awards such as Red Dot and applied hundreds of core patents to lead the development of the robotics category and provide high technology products that would appeal to targeted markets. Pudu Robotics has been rapidly growing in recent years to become a "leader" in the global markets with coverage of over 60 countries worldwide. The robots are widely applied in restaurants, hospitals, schools, office buildings, government halls, subway stations, waiting rooms, etc.

# Sales Network

Pudu Robotics is exploring the global markets rapidly and currently with the coverage of over 60 countries and 600 cities worldwide. We are on the way to explore and deliver more to the future!



# Culture



THINKING IN THE LIGHT  
OF FIRST PRINCIPLES



BE INVENTIVE



BE ENTERPRISING &  
ACCOUNTABLE



BE OPEN-UP



MOVING FAST



BE CUSTOMER  
CENTRIC



EMBRACING  
CHANGES



PURSUIING FOR  
THE ULTIMATE

A dark blue world map with white outlines of continents and countries, serving as a background for the text.

# After Sales Service

---

- **Offline Service: 1 Year Free Warranty | 7 × 24 Hours Service | Local Service & Support**

Pudu Robotics has a thorough after-sales support system and humanized after-sales policy as well, whenever it is needed, we are going all out to offer service and reach your satisfaction.

# T H A N K S

**Contact Us:**

Email: [global\\_sales@pudutech.com](mailto:global_sales@pudutech.com)

**Connect with Us:**



Pudu Robotics



---

Shenzhen Pudu Technology Co.,  
Ltd.

Tel.: +86-755-8695-2935(GMT+8, 9:00 to 21:00 on weekdays)

Address: 5F, Building 1A, Shenzhen International Inno Valley Phase 1, Dashi 1st Road,  
Nanshan District, Shenzhen, China

Website: <https://www.pudurobotics.com>