

DRYING SOLUTION - ES SERIES

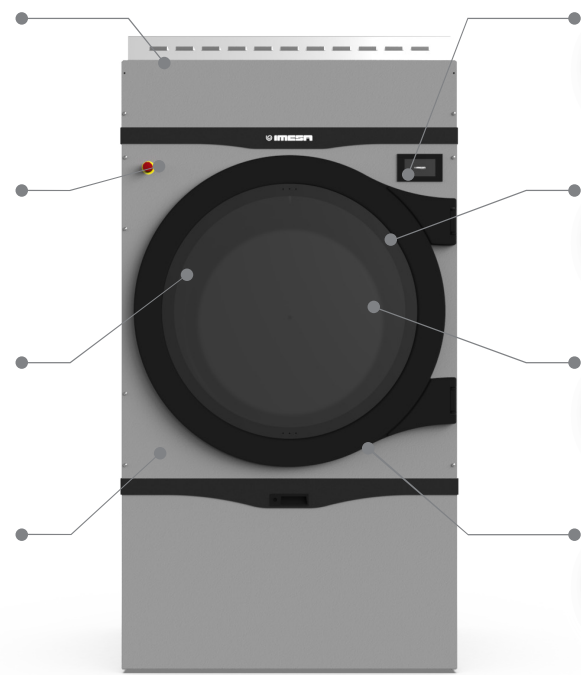
**TUMBLE DRYERS ES 23 - 34 KG**

**Performance**  
Standard automatic drum rotation inversion.  
Cycles with automatic humidity control.

**Multi-step system**  
Optimal temperature management and greater sensitivity in the treatment of garments.

**AISI 304 stainless steel drum**  
Without sharp edges for better conservation of linen.

**Filter with high filtering power**  
Tear-proof and easy to clean filter with cleaning signaling on the display.



**IM10: intuitive for easy interaction**  
Drying parameters can be modified after the cycle is started.

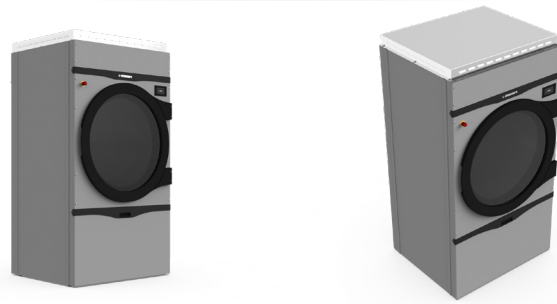
**Refined aesthetics**  
Black plastics, gray paint and rusting treatment on dryers door.

**Door with double glass**  
Double magnet closure.  
Greater energy savings.

**Cool down, anti-crease function**  
and smart air conveying inside the drum for perfect drying and easy ironing.



SCAN FOR MORE INFO



**OPTIONS and ACCESSORIES**

- DSC: Drum speed control
- FSC: Fan speed control (NOT available on GAS model)
- Working at partial or full power (for electric models ONLY)
- Left-hand door opening
- 3 front panels in AISI 304 stainless steel
- Central front panel in AISI 304 stainless steel
- Lint filter in AISI 304 stainless steel
- Stainless steel steam exchanger filter
- Stainless steel steam battery
- Payment systems for self-service use

## TECHNICAL DATA

	ES 23	ES 34
- Capacity 1:18 - 1:20	25 - 23 Kg (55-50.7lb)	37 - 34 Kg (81.5 - 75 lb)
- Drum diameter Ø	977 mm (38.5 inch.)	977 mm (38.5 inch.)
- Drum depth	590 mm (23.2 inch.)	870 mm (34.2 inch.)
- Drum volume	443 lt	653 lt
- Load diameter Ø	777 mm (30.6 inch.)	777 mm (30.6 inch.)
- Standard speed	44 r.p.m.	44 r.p.m.
- Air sound intensity	61 dB (A)	61 dB (A)
- Heating leakage	15 %	15 %
- Vent air\smokes Ø	200 mm (7.9 inch.)	200 mm (7.9 inch.)
- Air flow	1680 m³/h (990 CFM)	1680 m³/h (990 CFM)
- Max counterpressure	10 mt	10 mt
- Machine dimension WxDxH (100 mm = 3.93 inch.)	1022x918x1932 mm	1022x1188x1932 mm
- Net weight (electric \ gas \ steam)	286 \ 287 \ 290 Kg	323 \ 321 \ 323 Kg
- Packing dimension WxDxH (100 mm = 3.93 inch.)	1060x950x1974 mm	1060x1220x1974 mm
- Gross weight (electric \ gas \ steam)	298 \ 300 \ 303 Kg	341 \ 339 \ 341 Kg
- Packaging volume	1.98 m³ (70 ft³)	2.55 m³ (90 ft³)
- Wooden cage WxDxH (100 mm = 3.93 inch.)	1128x1018x2129 mm	1128x1288x2129 mm
- STD. packed machines in to 20' container	12 pz.	10 pz.
- STD. packed machines in to 40' container	24 pz.	21 pz.

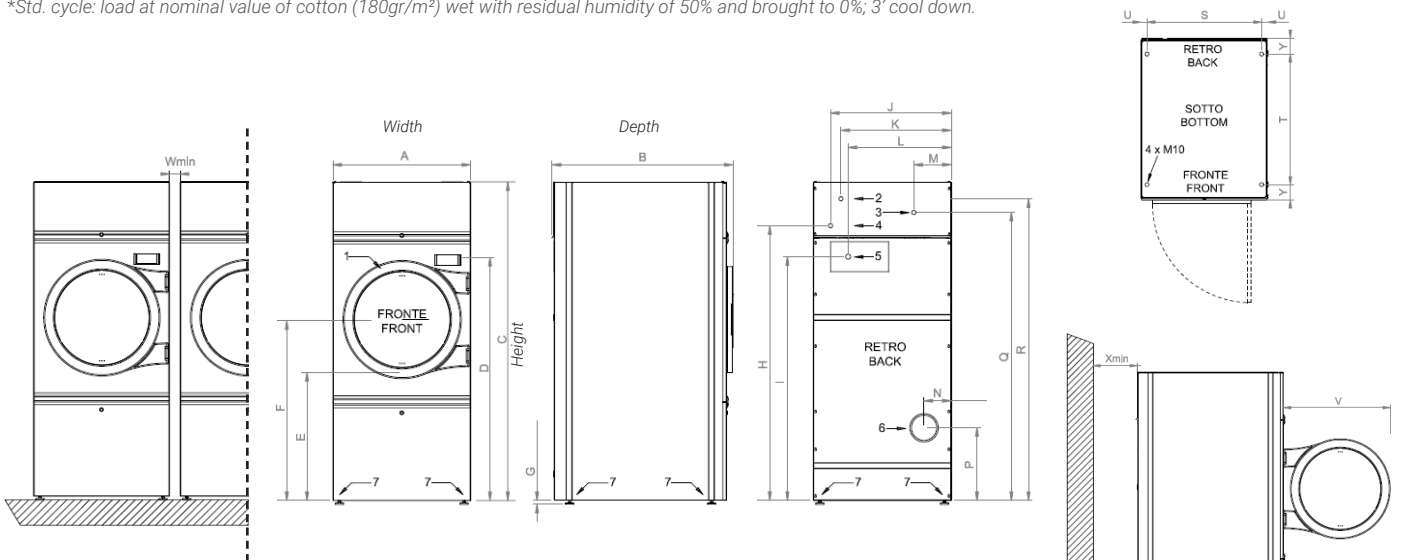
## DATA BY TYPE OF HEATING

- Electrical Heating	24 kW	36 kW
- Consumption*	13,1 kWh	19,2 kWh
- Electric absorption (50/60Hz)	25,1 kW	37,1 kW
- 3ph380V-480V(+N) / 3ph220-240V / 1ph230V 50\60 Hz	37 / 64 / 110 A	54 / 94 / 162 A
- Cable section (100 mm = 3.93 inch.)	10 / 16 / 25 mm²	16 / 35 / 25 mm²
- Steam heating consumption* (5 bar)**	49 Kg ( 108 lb)	73 Kg ( 161 lb)
- GAS heating consumption*	37,8 kW	50,4 kW
- GAS heating consumption* (G20 - GPL\GLP)	1,6 m³ - 1,1 Kg	2,3 m³ - 1,6 Kg
- Electric consumption*	0,4 kWh	0,5 kWh
- Electric absorption (50/60Hz)	1,1 kW	1,1 kW
- 3ph380V-480V(+N) / 3ph220-240V / 1ph230V 50\60 Hz	2,1 / 4 / 6,3 A	2,1 / 4 / 6,3 A
- Cable section (100 mm = 3.93 inch.)	2,5 / 2,5 / 2,5 mm²	2,5 / 2,5 / 2,5 mm²

NOTA: all technical data refers to reverse action machines.

NOTA: machines is on 4 M10 feet (pos. 7).

\*Std. cycle: load at nominal value of cotton (180gr/m²) wet with residual humidity of 50% and brought to 0%; 3' cool down.



Pos. 1 - Door; Pos. 2 - Steam in (only steam heated machine) 1"; Pos. 3 - Steam out (only steam heated machine) 1"; Pos. 4 - GAS supply (only GAS heated machine) 3/4"; Pos. 5 - Electrical power supply;  
Pos. 6 - Humid air and smoke (GAS heated machines) vent; Pos. 7 - Feet

100 mm = 3.93 inch. - factor conversion 1 / 25,4

[mm]	A	B	C	D	E	F	G	H	I	J	K	L	M	N	P	Q	R	S	T	U	V	W <sub>min</sub>	Y	X <sub>min</sub>
ES 23	1022	918	1932	1525	699	1061	15+20	1496	1496	921	685	921	327	193	422	1691	1776	945	671	38,5	975	10	105	500
ES 34	1022	1188	1932	1525	699	1061	15+20	1496	1496	921	685	921	327	193	422	1691	1776	945	652	38,5	975	10	100	500



imesa.it

Via degli Olmi 22 31040 Cessalto TV Italia - info@imesa.it

**IMESA**  
designing your clean