

DATA
EFFORT CHANGE
MARKETING
COMMUNICATION
PROCESS
SOCIAL
SUCCESS
CUSTOMER
IMAGINE SERVICE
DRYING
WEBSITE
ENVIRONMENT
WEBSIDE
DESIGN
MESSAGE PEOPLE
WASHING
MEDIA
NETWORK
ENGINEERING
EMOTION
IDEA
DESIGN
MESSAGE PEOPLE
CLEAN
CREATIVITY
IDENTITY
WEB
EVOLUTION
INNOVATION
IRONING
VALUE
STRATEGY
PRODUCTION
PROJECT
VISION



SOLUTIONS

PRICE LIST 2022

INDEX MACHINES/ACCESSORIES

16-19

PROEasyLine

Professional Washing Machines 6-8 Kg
Professional Dryers 6-8 Kg

22-29

HIGH SPIN WASHING MACHINES SMALL-MEDIUM CAPACITY LM LINE

High Spin Washing Machines 8-11 Kg
High Spin Washing Machines 14-18-23 Kg
High Spin Washing Machines 26-32 Kg
High Spin Washing Machines 40-55 Kg

30-35

HIGH SPIN WASHING MACHINES BIG CAPACITY LM LINE

High Spin Washing Machines 70-85 Kg
High Spin Washing Machines 100-125 Kg
Tilting High Spin Washing Machines 100-125 Kg

36-39

BARRIER WASHERS D2W LINE

Barrier Washers 18-23 Kg
Barrier Washers 30-55 Kg

40-47

LOW SPIN WASHING MACHINES SMALL-MEDIUM CAPACITY RC LINE

Low Spin Washing Machines 11 Kg
Low Spin Washing Machines 18-23 Kg
Low Spin Washing Machines 30 Kg
Low Spin Washing Machines 40-55 Kg

48-49

LOW SPIN WASHING MACHINES BIG CAPACITY RC LINE

Low Spin Washing Machines 70-85 Kg

50-55

TUMBLE DRYERS ES LINE

Tumble Dryers 10-14-18 Kg
Tumble Dryers 23-34 Kg
Tumble Dryers 55-75 Kg

56-57

GREEN TUMBLE DRYERS ES LINE
GREEN Tumble Dryers 10-14-18 Kg

58-59

TANDEM TDM LINE
High Spin Washing Machine + Tumble Dryer 11-18 Kg

60-61

FLATWORK IRONERS FI LINE
Flatwork Ironers ø 250-330 mm

62-63

DRYING IRONERS MCA LINE
Drying Ironers ø 330 mm

64-65

DRYING IRONERS MCM LINE
Drying Ironers ø 500 mm

72-75

DRY-CLEANING MACHINES

76-82

**IRONING EQUIPMENT
SPOTTING MACHINES
STEAM BOILERS**

83

**TROLLEYS
PACKING MACHINES**

CERTIFICATION

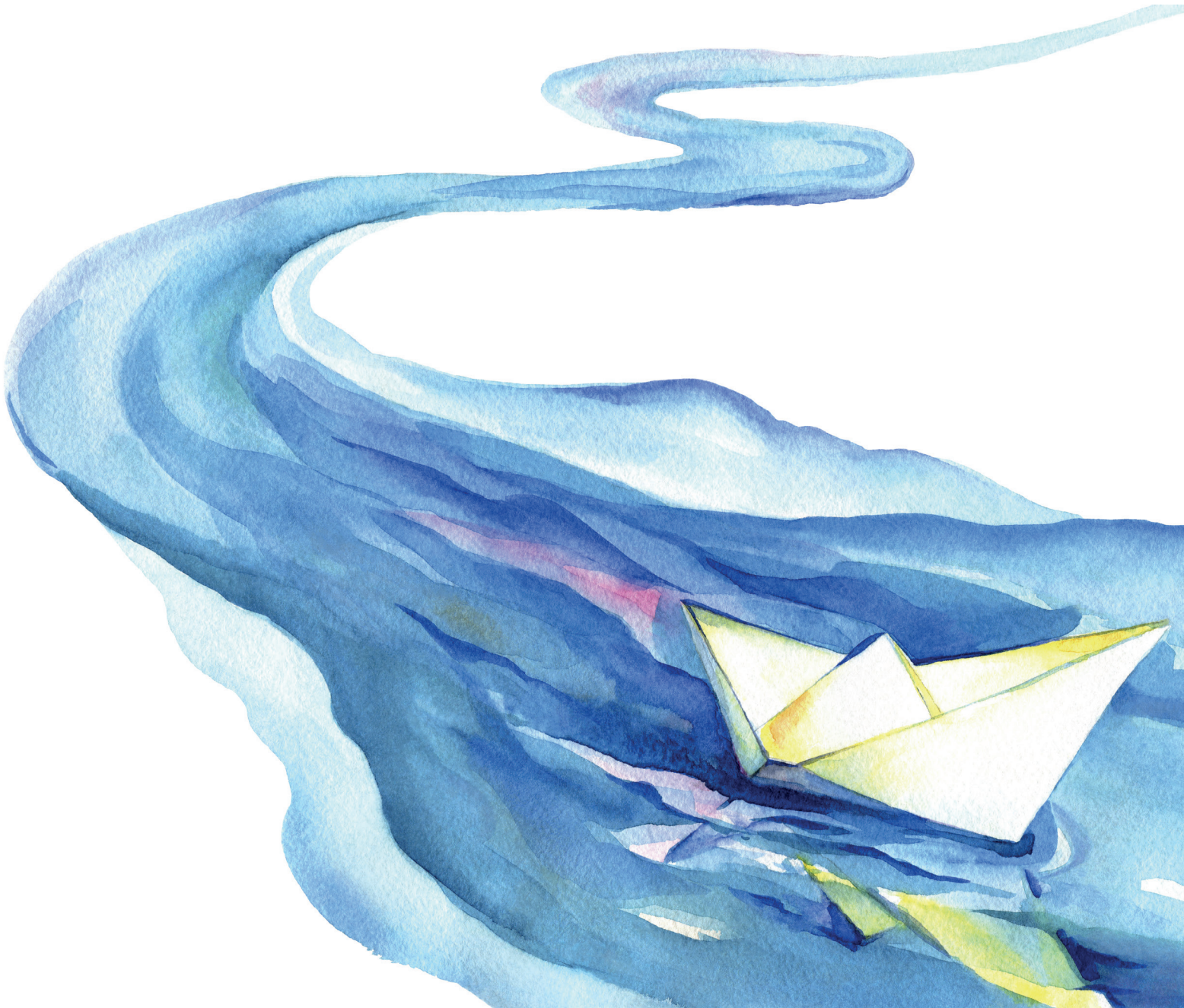


ABOUT US

***We drive change to create value
and achieve the success of our customers and our people***

We support people with our services and design solutions of sustainable laundry, simplifying their lives, ensuring long lastingness of fabrics.

Our products are designed to handle any fabric as needed, through a conscious and sustainable consumption of water and energy.



WHY CHOOSE US

OVER 50 YEARS OF EXPERIENCE

We at IMESA S.p.A. are the only Italian manufacturer whose core business is also a vocation:
WASHING, DRYING and IRONING of every type of fabric.

We design solutions of **SUSTAINABLE** laundry, simplifying their lives, ensuring **LONG LASTINGNESS** of fabrics.
OUR AMBITIONS?
Ensure the best **WASHING EXPERIENCE** ever.

Our primary goal is the success of those who operate our machines every day.
Our mission is the well-being of everyone who lives a daily life of cleanliness and beauty.

Visiting our factories means seeing and touching the entire production process, from the design to the production of the components, from the assembly to the testing phase.

designing your clean

OUR GOALS

- Care and maintenance of the garments
- High performance of our machines
- Optimization of cycles and working times
- Consumption control
- Proper use of the detergent
- Sharing the control of work
- On-line advice and assistance



OUR VALUES



| We invest in our ideas, our people and in processes



| We talk to the customer to understand their needs



| We constantly innovate our technology



| We customize our services



| We develop the Made in Italy



| We certify our processes and our products

WHAT WE DO

- High spin washing machines
- Low spin washing machines
- Barrier washers
- Tandem
- Tumble dryers
- Flatwork ironers
- Drying ironers

THE LAUNDRY TREATMENT

FLAT LINEN

1



Sorting of dirty linen

- Divide garments by type of fabric, color and degree of dirt
- Use trolleys exclusively dedicated to dirty linen

2



High Spin Washing

- Select the appropriate washing cycle in the program library *or*
- Create the custom washing program considering:
 - water hardness
 - water temperature
 - type of detergent
 - spin power

3



Drying in tumble dryer

- Select the recommended drying cycle for the type of fabric and degree of humidity required


4



Ironing with drying ironer

- Select the recommended ironing program for the type of fabric


4



Ironing with flatwork ironer

- Select the recommended ironing program for the type of fabric

5



Folding

- Proceed with folding
- In case of drying ironer with bending machine, folding occurs automatically at the end of the cycle

6

Storage in cloakroom and/or return



FLOW

1



Sorting of dirty linen

- Divide garments by type of fabric, color and degree of dirt
- Use trolleys exclusively dedicated to dirty linen

2



High Spin Washing

- Select the appropriate washing cycle in the program library *or*
- Create the custom washing program considering:
 - water hardness
 - water temperature
 - type of detergent
 - spin power

TOWEL


3



Drying in tumble dryer

- Select the recommended drying cycle for the type of fabric

4



Folding

- Proceed with folding

5

Storage in cloakroom and/or return



THE LAUNDRY TREATMENT

CLOTHING

1



Sorting of dirty linen

- Divide garments by type of fabric, color and degree of dirt
- Use trolleys exclusively dedicated to dirty linen

2



High Spin Washing

- Select the appropriate washing cycle in the program library
or
- Create the custom washing program considering:
 - water hardness
 - water temperature
 - type of detergent
 - spin power

3



Drying in tumble dryer

- Select the recommended drying cycle for the type of fabric and degree of humidity required
or
- Create the custom program

4



Ironing

Iron using the equipment suitable for the cloth to be treated (press, ironing table, form finisher, topper etc.)

5

Storage in cloakroom and/or return



LOW SPIN WASHING CYCLE

The washing carried out in a low spin washing machine involves the subsequent passage in the hydroextractor as an indispensable tool to complete the washing process.

FOR PROPER WASHING CYCLE

Factors influencing washing cycle are:

- TISSUE ANALYSIS
- PRIOR ANALYSIS OF WATER
- MOST SUITABLE DETERGENT
- CHEMICAL ACTION
- THERMAL ACTION
- MECHANICAL ACTION
- TIMING IN THE VARIOUS PHASES (pre-washing/washing/rinsing/centrifugal)

HARDNESS OF THE WATER

The hardness of the water plays a fundamental role in washing. Check the values and compare with the reference technician for the definition of the washing cycles

- Soft water : 0-8°f
- Normal water: 8-18°f
- Hard water: 18°f

SOAPS

The correct amount of detergent depends on the hardness of the water, the type of linen and the degree of dirt of the same. The grammage of the detergent may be verified cycle by cycle. The most appropriate detergent is the one suggested for the fabric to be treated.

FOR PROPER DRYING CYCLE

FABRICS SELECTION

Check drying symbols on fabric labels to avoid unpleasant damage.

For even drying, please divide the linen by type of fabric and by desired degree of drying.

Based on the characteristics of the fabric, set the temperature, the air flow, the exposure time and the desired drying level.

SIZING OF A LAUNDRY

To properly size a laundry room you need:

- Number of beds in total capacity
- Average percentage employment rate of the activity (in the quarter of greatest use)
- Weekly consumption of linen (weights and sizes)
- Available space for the installation
- Available connections
- Laundry working hours (hours/day and days/week)

$$\text{HOURLY LINEN TREATMENT} = \frac{\text{(Kg) Weekly quantity}}{\text{Weekly hourly activity hours}}$$

INFORMATION TABLE OF CONSUMPTION

TYPE OF ACTIVITY	FREQUENCY OF LINEN CHANGE	WEEKLY CONSUMPTION*
5 stars hotel	daily	15-18 Kg /bed
4 stars hotel	4 times a week	10-15 Kg /bed
3 stars hotel	2/3 times a week	8-10 Kg /bed
1-2 stars hotel	2/3 times a week	5-8 Kg /bed
1 star hotel	1 time a week	5-8 Kg /bed
Retirement home	daily/self-sufficient host	10,5 Kg
Retirement home	daily/ not self-sufficient host	25 Kg
Hospital	daily	21 Kg /bed
Kindergartens and Crèches	daily	2,5 Kg /child
Traditional restaurant	seating (napkin + portion scrub + portion tablecloth)	from 0,3 to 0,5 Kg / day seating

** the value shown also include table covers*

The above information are indicative.

Our sales staff is at your disposal for a correct plant sizing process, to define the correct and optimal equipment needs.

We invite you to contact your reference Area Manager for any support in inspections, sizing, estimates and executive layouts.

Conversion Factors

UNIT	CONVERSION FACTOR
inches	= mm * 0.039370
Lb	= Kg * 2,205
gal	= lt * 0,264

ADDITIONAL SALES AND INSTALLATION ACTIVITIES

1. **TECHNICAL/COMMERCIAL INSPECTIONS**

2. **PREPARATORY PLANT BUILDING ACTIVITIES**

Building works (subframe screws for fixing to the ground, bases, tracks)

Water works (water loading/unloading systems, flues, air outlets)

Electrical works (electrical system in accordance with standards, grounding, switches, sockets and anything else necessary in compliance with standards)

3. **TRANSPORT AND LOADING/UNLOADING ACTIVITIES**

Transport

Unloading

Positioning machines in the laundry room (any crane lift and what else is indispensable)

4. **MACHINE SET-UP**

Unpacking

Film integrity check

Block, stainless steel protector and labels removal

Ground fixing - feet mounting (on counterframe and/or anchors for RC line machines)

5. **CONNECTIONS AND COMMISSIONING**

Water connections (filter mounting not provided by IMESA)

Electrical connections

Steam connections (if any) including valve assembly provided by IMESA

Gas connections

Compressed air connections (if any)

Dosing pump connections (if any)

Centralized cash connections (for self-service)

Connection to the WIFI network

6. **FUNCTIONAL TEST**

7. **TRAINING**

HOW TO COMPLETE A

1

Upon receipt of the OFFER request by the customer, duly completed in all its parts under mentioned, the IMESA Sales Office will send the OFFER to the same indicating the protocol number of the proposal, the date and all the necessary data.

2

The customer who accepts the IMESA offer, will send the PURCHASE ORDER (P.O.) complete with all references of IMESA offer (number of protocol and date of issue). The IMESA offer stamped and signed by the customer is considered a valid PURCHASE ORDER.

3

Once the customer's purchase order has been received or the IMESA offer has been stamped, signed and sent back, the IMESA Sales Department will send the ORDER CONFIRMATION (O.C.) to the customer.

- The production of the machines starts from the issue of the Order Confirmation and/or simultaneous receipt of an advance payment as a deposit.
- If the offer provides an advance payment the customer will receive the IMESA PROFORMA INVOICE first, while the Order Confirmation (O.C.) will be issued after payment.

For a proper order management system, we invite you to fill out the purchase order providing all the necessary information as follows:

COMPANY INFORMATION

Company name and reference person of the order
VAT number (for Italy and EU customers)
Billing address
Telephone
Email
Website
SDI or PEC (data required for customers Italy)
Bank details

MACHINES DETAILS

LM	Quantity	ES	Quantity	FI	Quantity
RC	Model		Model		Model
D2W	Capacity (Kg)		Capacity (Kg)		Roller length
	Heating		Heating		Roller diameter
	List of Accessories/Optional		List of Accessories/Optional		Vacuum YES/NO
	Voltage/Frequency		Voltage/Frequency		List of Accessories/Optional
					Voltage/Frequency
MCA	Quantity	TDM	WASHER	DRYER	
MCM	Model		Quantity		Model
	Roller length		Model		Capacity (Kg)
	Heating		Capacity (Kg)		Heating
	List of Accessories/Optional		Heating		List of Accessories/Optional
	Voltage/Frequency		List of Accessories/Optional		Voltage/Frequency
			Voltage/Frequency		

PURCHASE ORDER

DELIVERY TIME

- **7 working and consecutive days from delivery of customer's order confirmation, stamped and signed for acceptance, and simultaneous receipt of an advance as a deposit.**

- 1.The delivery times indicated is valid for the most popular models and refers only to standard machinery WITHOUT OPTIONAL.
- 2.Optional and special voltages other than standard can extend the standard delivery times.
- 3.The specified delivery times are indicative and depend on multiple variables not attributable to the production organisation and to the availability of the production line. For better sharing, customers are invited to check the delivery date with the IMESA Sales Department.

GENERAL INFORMATION

ACCESSORIES and OPTIONAL

The request for ACCESSORIES does not involve any change in production times and delivery times. On the contrary the demand for OPTIONAL machines can lead to VARIATIONS in production and delivery times.

It is essential to specify the request for optionals when pre-ordering.

The optional "SPECIAL" involve an additional study by IMESA SpA, to support information such as availability, price and delivery time.

WASHERS LM - RC - D2W models

When the order includes the PERISTALTIC PUMPS accessory, must be always indicated :

cod. AI - peristaltic pumps for liquid detergent pre-setting, indicating then the KIT with the quantity of pumps desired.

In case of direct steam heating, the steam standard is 9 bar.

VOLTAGES ON REQUEST

The voltages available are listed in this Price List. The reading of the voltage matrix is as follows:

- "SPECIAL" boxes indicate potentially doable machine, but subject to verification in terms of delivery and component procurement.
- the boxes "NOT AVAILABLE" indicate that the machine is not doable.
- "STANDARD" boxes indicate that machines are standard with the voltage shown in the column header.
- "€" boxes indicate the additional cost for the required voltage.
- "1ph230V" boxes indicate that the machine cannot be supplied with the voltage listed in the column header, but it can be supplied and used with the voltage 1ph230V, "subset" of the voltage reported in the column header.

SELF SERVICE LAUNDRY

Mechanical and electronic coin box for self-service machines are optional included in the OPTIONAL list of each model and must therefore be ordered separately.

Accessories such as CENTRALISED PAYMENT SYSTEMS, EQUIPMENT AND PLANT BUILDING, BASES, COMPONENTS FURNITURE, INSTRUCTION PANELS, ACCESSORIES, TROLLEYS AND VENDING MACHINES for a complete self-service shop, are the subject of a specific list and available on request.

We invite you to contact our Sales Department for customized consulting, design and quotation.

HOW TO MEASURE THE VOLUME - CAPACITY RATIO

In the world of laundry it is essential to know the loading capacity of a machine, be it a washing machine, a hydro-extractor or a dryer. There are reporting parameters established at European level by the competent bodies to which all manufacturers must refer.

The standard UNI 8331 specifies that the capacity of a washing machine is given by the volume of the basket, net of the breakwater, calculated in dm³ and divided by 10.

The capacity of a machine is then calculated by considering the volume of the basket in dm³ (r₂x3,14xP) and then divided by the value shown in the following table.

CAPACITY RATIOS USED BY IMESA

The capacity ratio traditionally adopted by IMESA is 1:10 (ISO 9398) even if in this price list is also indicated the ratio 1:9 for washing machines and 1:16 for dryers used as a reference by the market.

MODEL	CAPACITY RATIO
WASHERS	▶ 1:10 Drum volume 180 lt = 180:10= 18 Kg capacity
DRYERS	▶ 1:20 Drum volume 180 lt = 180:20= 9 Kg capacity
HYDROEXTRACTOR	▶ 1:4,5 Drum volume 180 lt = 180:4,5= 40Kg capacity

*Pictures in this Price List are indicative of the product

*The technical data of the products shown in the tables may be subject to change

PROFESSIONAL PROEASYLINE

PEL W -Capacity 6-8 Kg

COMPACT DESIGN



HIGHLIGHTS

- New programming display, new UX
- Compact machine suitable for domestic installation
- Stackable with PROEasyLine dryer
- Attractive stainless steel AISI 304 casing and wash drum
- Hot and cold water connections
- 4 powerful shock absorbers firmly attached to a steel bottom plate
- All lifters are removable for easy cleaning of drum
- Automatic weighing system for laundry
- Load distribution and gentle washing "ACTIVE DRUM™" system
- Anti-balancing 3D sensor
- External control unit for detergent dosing system management, self-service payment systems, machine reservation system
- Steel door seal, ensures hygienic washing cycle and a clean drum without germs
- Anti-block drain valve - for model with valve exhaust system -
- Flexible program structure with 28 programs available
- Disinfection programs at 90°, 60° and 40°
- MOP programs for cleaning companies
- Available with peristaltic pumps (on request)
- Highest spin 1400 rpm
- 98% of parts is recycleable
- 30.000 tested cycles

Models	Capacity		Exhaust System	Heating	Standard Voltage 50 HZ	Price
	1:9	1:10				
PELW 65 EDV	6,7	6	Drain Valve	Electric	3ph 400V+N/3ph 230V/1ph 230V	€ 3.500,00
PELW 65 EDP	6,7	6	Drain Pump	Electric	3ph 400V+N/3ph 230V/1ph 230V	€ 3.500,00
PELW 80 EDV	8,9	8	Drain Valve	Electric	3ph 400V+N/3ph 230V/1ph 230V	€ 4.100,00
PELW 80 EDP	8,9	8	Drain Pump	Electric	3ph 400V+N/3ph 230V/1ph 230V	€ 4.100,00

ACCESSORIES

Code	Description	Price
29500PLEV03L	kit 3 peristaltic automatic dosing pumps with programmable washing formulas	€ 660,00
2060401A	stainless steel base h 300 mm for 6 Kg capacity model	€ 400,00
2161210A	stainless steel base h 300 mm for 8 Kg capacity model	€ 400,00
	coins for self service coin box - package includes 250 pcs -	€ 250,00

OPTIONAL

Code	Description	Price
AM	mechanical coin box for self-service use - on side of machine -	€ 680,00
CH	mechanical coin box for self-service use - on top of machine -	€ 680,00
AL	electronic coin box for self-service use - on side of machine -	€ 740,00
CG	electronic coin box for self-service use - on top of machine -	€ 740,00
ASG842982	WI-FI module	€ 240,00

VOLTAGE ON REQUEST

50 Hz					
	3ph 400/415V+N	3ph 230V	1ph 230V	2ph 400/440V	2ph 115V
PELW 65 EDP	standard	standard	by the installer	€ 300,00	special
PELW 65 EDV	standard	standard	by the installer	€ 300,00	special
PELW 80 EDP	standard	standard	by the installer	€ 300,00	special
PELW 80 EDV	standard	standard	by the installer	€ 300,00	special

60 Hz				
	3ph 400/415V+N	1ph 230V	2ph 400/440V	2ph 115V
PELW 65 EDP	€ 300,00	€ 300,00	€ 600,00	special
PELW 65 EDV	€ 300,00	€ 300,00	€ 600,00	special
PELW 80 EDP	€ 300,00	€ 300,00	€ 600,00	special
PELW 80 EDV	€ 300,00	€ 300,00	€ 600,00	special

PACKING

	Price
wrapping film + wooden pallet	included
Other packings	on request

TECHNICAL DATA

	PELW 65 EDP	PELW 65 EDV	PELW 80 EDP	PELW 80 EDV
Drum volume	60 lt	60 lt	80 lt	80 lt
Washing speed	1400 r.p.m.	1400 r.p.m.	1400 r.p.m.	1400 r.p.m.
G-Factor	524	524	524	524
Hydraulic connection	2 x 3/4" Ø	2 x 3/4" Ø	2 x 3/4" Ø	2 x 3/4" Ø
Machine dimensions:WxDxH	595x591x850 mm	595x591x850 mm	595x706x850 mm	595x706x850 mm
Net weight	77 Kg	76,5 Kg	92,5 Kg	92 Kg
Packing dimensions : WxPxH	640x661x920 mm	640x661x920mm	640x776x920 mm	640x776x920 mm
Gross weight	80,2 Kg	79,7 Kg	95,9 Kg	95,4 Kg
Power	3,2 kW	3,2 kW	4,6 kW	4,6 kW

PROFESSIONAL IRONING TABLE



EASY TABLE

HIGHLIGHTS

- Folding vacuum and heated ironing table
- Suction operated pedal control
- A heating device keeps the ironing table perfectly dry
- Adjustable in height
- Garment tray
- Support for separate iron - without iron -
- Foldable can be easily stored
- 230V 50 Hz 1ph

Price

€ 660,00

PROFESSIONAL DRYERS PROEASYLINE

PEL D -Capacity 6-8 Kg

COMPACT DESIGN



HIGHLIGHTS

- New programming display, new UX
- Compact machine suitable for domestic installation
- Stackable with PROEasyLine washer
- Attractive stainless steel AISI 304 casing and wash drum
- New loading door
- New big filter mounted on loading door
- BUTTERFLY drying system prevents the clothes from bundling and creasing
- Safety system stops cycle if the tumble dryer is opened during drying
- Robust brushless induction motor to longer-life time, lower noise and faster drying
- Two additional supporting rolls for better stability - also for heavy loads
- 10 available drying programs
- The heat pump dryers can be installed in rooms with a lower level of ventilation
- Each component over 50 gram is marked for recycling
- 15.000 tested cycles

Models	Capacity		Exhaust System	Heating	Standard Voltage 50 Hz	Price	
	1:18	1:20					
PELD 65 C	6,2	5,6	Condensator	Electric	1ph 230V	€	2.400,00
PELD 65 EE	6,2	5,6	External	Electric	1ph 230V	€	2.400,00
ES 65 PEHP	6,2	5,6	Condensator	Heat Pump	1ph 230V	€	2.400,00
PELD 80 EE	8,1	7,3	External	Electric	1ph 230V	€	3.000,00
PELD 80 HP	8,1	7,3	Condensator	Heat Pump	1ph 230V	€	3.000,00

ACCESSORIES

Code	Description	Price	
2060401A	stainless steel base H 300 mm for 6 Kg capacity models	€	400,00
2161210A	stainless steel base H 300 mm for 8 Kg capacity models	€	400,00
	coins for self service coin box - package includes 250 pcs -	€	250,00

OPTIONAL

Code	Description	Price	
AM	mechanical coin box for self-service use - on side of machine -	€	680,00
CH	mechanical coin box for self-service use - on top of machine -	€	680,00
AL	electronic coin box for self-service use - on side of machine -	€	740,00
CG	electronic coin box for self-service use - on top of machine -	€	740,00
ASG842982	WI-FI module	€	240,00

VOLTAGE ON REQUEST

50 Hz				
	3ph 400/415V+N	1ph 230V	2ph 400/440V	2ph 115V
PELD 65 C	1ph 230V std.	1ph 230V std.	€ 1.000,00	special
PELD 65 EE	1ph 230V std.	1ph 230V std.	€ 1.000,00	special
PELD 80 HP	1ph 230V std.	1ph 230V std.	€ 1.200,00	special
PELD 80 EE	1ph 230V std.	1ph 230V std.	€ 1.000,00	special

60 Hz				
	3ph 400/415V+N	1ph 230V	2ph 400/440V	2ph 115V
PELD 65 C	€ 370,00	€ 370,00	€ 1.100,00	special
PELD 65 EE	€ 370,00	€ 370,00	€ 1.100,00	special
PELD 80 HP	not available	not available	not available	not available
PELD 80 EE	€ 370,00	€ 370,00	€ 1.100,00	special

PACKING

Wrapping film + wooden pallet
Others

Price

included
on request

TECHNICAL DATA

	PELD 65 C	PELD 65 EE	ES 65 PEHP	PELD 80 EE	PELD 80 HP
Drum volume	112 lt	112 lt	112 lt	145 lt	145 lt
Drying speed	52 r.p.m.	52 r.p.m.	52 r.p.m.	52 r.p.m.	52 r.p.m.
Exhaust	--	160 m3/min	--	160 m3/min	--
Air exit	--	100 mm Ø	--	100 mm Ø	--
Machine dimensions: WxPxH	595x645x850mm	595x645x850 mm	595x645x850 mm	595x769x850 mm	595x769x850 mm
Net weight	42,8 Kg	37,4 Kg	52 Kg	43 Kg	61 Kg
Packing dimensions : WxDxH	640x723x920 mm	640x723x920 mm	640x723x920 mm	640x838x920 mm	640x838x920 mm
Gross weight	47,2 Kg	41,8 Kg	50 Kg	47,6 Kg	65,6 Kg
Power	2,8 kW	3,3 kW	0,8 kW	3,3 kW	1 kW

PROFESSIONAL STEAM IRON



EASY IRON

HIGHLIGHTS

- Steam generator with professional iron (1Kg) and steam silicon hose
- Boiler capacity 1,5 lt
- Water level measuring stick
- Cable holder rod
- Double working and safety thermostats
- Protective lid
- 230V 50HZ 1ph

Price

€ 680,00

IM11, AN ALLY AT YOUR

SMART DEVICE, THIS IS WHAT THE MARKET WANTS

machines with which to dialogue, monitor each phase of work and optimize consumption.

IMESA fully meets the expectations of the market by fielding computers IM11 and CUSTOM WEB TECHNOLOGY:

all MADE IN ITALY, all MADE IN IMESA.
Hardware and software developed in IMESA and constantly implemented.

With IM11 you have intelligent machines that allow LAUNDRY MONITORING and CONSTANT CONTROL of its operation.

With IM11 you have intelligent machines that can ANALYZE WORK PROCESSES and MAXIMIZE PROFITS.

With IM11 you have intelligent machines that allow you to MANAGE MACHINE DOWNTIME, through timely reports of unwanted anomalies.



I'M CONNECT: AN ALWAYS CONNECTED PORTAL

Why a dedicated IMESA portal?

The IMESA I'M CONNECT platform is the focal point of the system and is the basis for generating and transmitting the data that every stakeholder in the sales network wants or needs.

For this reason at IMESA we have chosen to directly manage the platform in its structure, in its operation but, above all, in its implementations. Updating, enriching and perfecting the platform is the basis of an excellent service that translates into customer benefits. Access to the portal has a hierarchical structure but, at the same time, totally flexible in the process of assigning permissions: from HIGH PROFILE USER to BASIC USER, everyone has access to the functions necessary for their role.

What can you "ask" the I'M CONNECT portal?

Researching the machine of interest by serial number, you can access macro-information, monitoring and analysis machine operation in addition to collection, organization, historization and data analysis.

I'M CONNECT is an intuitive interface, a complete and easy to use tool,

it's a dashboard through which you can see all the aspects of your business:

maximum vision = maximum efficiency = maximum profit

ACTIVATE YOUR OWN PROFILE
AND DISCOVER ALL THE OPPORTUNITIES OFFERED BY I'M CONNECT

SIDE

MUCH MORE THAN YOU CAN IMAGINE

ON-BOARD AND REMOTE PROGRAMMING
ON BOARD AND REMOTE SOFTWARE UPDATING MACHINES
ACCESS TO OPERATING PARAMETERS
ACCESS TO FINANCIAL PARAMETERS
ANALYSIS OF CONSUMPTION
VERIFICATION OF OPERATING ALARMS

Thanks to the wi-fi connection, the data files are always available in the portal.

Measuring and tracking the performance of washing machines has never been easier.
You can save and make the most of your resources thanks to the intelligent technology of IM11.



IT'S EASY TO CONNECT!

LM -Capacity 8-11 Kg

**SMALL CAPACITY,
BIG PERFORMANCE**



HIGHLIGHTS



- IM11 Touch Screen 7" with new graphic layout
- Unlimited programming solutions
- Total control of machine by wi-fi on the IM11
- Delay start available
- Control panel tilted for better visibility and easy use
- Programmable water, temperature, engine speed and rotation/break rate levels for total customization of washing cycles
- AISI 304 stainless steel casing and wash drum
- AISI 304 stainless steel spider
- Balanced hot/cold water fill for energy saving
- Balancing system: vertical and horizontal shock absorbers for maximum stability and low noise.
- Smart weighing system with acceleration sensor
- Reduced space between the drum and valve to zero water and detergent waste
- End-of-cycle audible warning device
- USB port
- No anchoring to the ground
- Wet-Cleaning ready

Models	Capacity		Heating	Standard Voltage 50/60Hz	Price
	1:9	1:10			
LM 8	9	8	Hot Water	1ph 230V	€ 7.860,00
LM 8	9	8	Electric	3ph 400V + N	€ 7.900,00
LM 8	9	8	Direct Steam	1ph 230V	€ 8.140,00
LM 8	9	8	Electric + Steam	3ph 400V + N	€ 8.440,00
LM 8	9	8	Indirect Steam	1ph 230V	€ 8.480,00
LM 11	12	11	Hot Water	1ph 230V	€ 8.260,00
● LM 11	12	11	Electric	3ph 400V + N	€ 8.300,00
LM 11	12	11	Direct Steam	1ph 230V	€ 8.700,00
LM 11	12	11	Electric + Steam	3ph 400V + N	€ 8.980,00
LM 11	12	11	Indirect Steam	1ph 230V	€ 9.000,00

ACCESSORIES

Code	Description	Price
	1pc 30lt/h pump including flush + lance + tank end signal	€ 480,00
	2pc 30lt/h pump including flush + lance + tank end signal	€ 720,00
	3pc 30lt/h pump including flush + lance + tank end signal	€ 990,00
	4pc 30lt/h pump including flush + lance + tank end signal	€ 1.100,00
	5pc 30lt/h pump including flush + lance + tank end signal	€ 1.200,00
	6pc 30lt/h pump including flush + lance + tank end signal	€ 1.300,00
	drain pump kit	€ 960,00
	water loading pipes in metal sheath	€ 80,00
	crankcase covering in INOX AISI 304 h200 mm	€ 240,00
	crankcase covering in INOX AISI 304 h300 mm	€ 260,00
	coins for self service coin box - package includes 250 pcs -	€ 250,00

OPTIONAL

Code	Description	Price
AI	predisposition for 11 peristaltic pumps for liquid detergent + flush	€ 260,00
CY	hard water inlet valve	€ 180,00
BB	left-hand door opening	€ 120,00
DP	second drain valve - for recovery circuit -	on request
FO	crankcase h.200 mm - without covering -	€ 240,00
FQ	crankcase h.300 mm - without covering -	€ 280,00
FOR SELF SERVICE USE:		
AM	mechanical coin box	€ 460,00
AL	electronical coin box	€ 640,00
EASY WASH CASH	Centralized cash desk with 12 selections -Wall fixing- Electronic coin box with recognition of 5 different coin denominations, banknote reader, prepaid Card reader, management of the rest, coin hopper with self-charging system, reporting service at the end of the day on SD Card, CD for accounting and statistical management of the laundry. Complete with 20 cards.	€ 6.800,00
FLGINC EWC	flange for wall recessing mounting	€ 460,00
9998SCHEDBI3	connection interface between machine and the centralized cash desk -1 card every 3 machines	€ 360,00
ERSHED EWC	card distributor	€ 1.100,00
2950CARDCHIP	electronic card with chip	€ 2,00

VOLTAGE ON REQUEST

	3ph 400/415V+N 50/60Hz		3ph 230V 50/60Hz		1ph 230V 50/60Hz		3ph 400/440V 50/60Hz		3ph 115V 50/60Hz	
	electric	steam hot water	electric	steam hot water	electric	steam hot water	electric	steam hot water	electric	steam hot water
LM 8	standard	std 1ph230V	€ 130,00	std 1ph230V	€ 130,00	standard	€ 260,00	€ 260,00	special	special
LM 11	standard	std 1ph230V	€ 130,00	std 1ph230V	€ 130,00	standard	€ 260,00	€ 260,00	special	special

PACKING

	Price
Wrapping film + wooden pallet	included
Wooden cage	€ 160,00
Wooden crate	€ 200,00

TECHNICAL DATA

	LM 8	LM 11
Drum dimensions	535x360 mm (Ø x P)	535x470 mm (Ø x P)
Drum volume	81 lt	105 lt
High spin speed	1002 r.p.m.	1002 r.p.m.
G Factor	300	300
Water connections	2 x 3/4" Ø	2 x 3/4" Ø
Water drain	50 Ø mm	50 Ø mm
Machine dimensions: WxDxH	720x821x1113 mm	720x933x1113 mm
Net weight	254 Kg	264 Kg
Packing dimensions : WxDxH	760x940x1200 mm	760x1045x1200 mm
Gross weight	267 Kg	276 Kg
Electric heating power	7,5 kW	10,5 kW
Steam consumption	4 kg/h (Cycle B-ISO9398)	6 kg/h(Cycle B-ISO9398)

HIGH SPIN WASHING MACHINES

LM -Capacity 14-18-23 Kg

HIGHLIGHTS



THE MOST WANTED



- IM11 Touch Screen 7" with new graphic layout
- Unlimited programming solutions
- Total control of machine by wi-fi on the IM11
- Delay start available
- Control panel tilted for better visibility and easy use
- Programmable water, temperature, engine speed and rotation/break rate levels for total customization of washing cycles
- AISI 304 stainless steel casing and wash drum
- AISI 304 stainless steel spider
- New painted counter-wall
- New anti-vibration side panels and new door lock support pins
- New gasket on the front of the washing machine
- New mechanical door closing system
- New conical port seal
- Balanced hot/cold water fill for energy saving
- Balancing system: vertical and horizontal shock absorbers for maximum stability and low noise
- Difficult laundry load management system with accelerometer
- Reduced space between the drum and valve to zero water and detergent waste
- End-of-cycle audible warning device
- USB port
- Compatible with water recovery tanks
- No anchoring to the ground
- Wet-Cleaning ready

Models	Capacity		Heating	Standard Voltage 50/60 Hz	Price	
	1:9	1:10			€	€
LM 14	16	14	Hot Water	3ph 400V + N	€	10.760,00
LM 14	16	14	Electric	3ph 400V + N	€	10.800,00
LM 14	16	14	Direct Steam	3ph 400V + N	€	11.000,00
LM 14	16	14	Electric + Steam	3ph 400V + N	€	11.400,00
LM 14	16	14	Indirect Steam	3ph 400V + N	€	11.500,00
LM 18	20	18	Hot Water	3ph 400V + N	€	11.800,00
● LM 18	20	18	Electric	3ph 400V + N	€	11.900,00
LM 18	20	18	Direct Steam	3ph 400V + N	€	12.200,00
LM 18	20	18	Electric + Steam	3ph 400V + N	€	12.600,00
LM 18	20	18	Indirect Steam	3ph 400V + N	€	12.700,00
LM 23	24	23	Hot Water	3ph 400V + N	€	14.800,00
● LM 23	24	23	Electric	3ph 400V + N	€	14.900,00
LM 23	24	23	Direct Steam	3ph 400V + N	€	15.280,00
LM 23	24	23	Electric + Steam	3ph 400V + N	€	15.680,00
LM 23	24	23	Indirect Steam	3ph 400V + N	€	15.700,00

ACCESSORIES

Code	Description	Price
	1pc 30lt/h pump including flush + lance + tank end signal	€ 480,00
	2pc 30lt/h pump including flush + lance + tank end signal	€ 720,00
	3pc 30lt/h pump including flush + lance + tank end signal	€ 990,00
	4pc 30lt/h pump including flush + lance + tank end signal	€ 1.100,00
	5pc 30lt/h pump including flush + lance + tank end signal	€ 1.200,00
	6pc 30lt/h pump including flush + lance + tank end signal	€ 1.300,00
	drain pump kit	€ 960,00
	water loading pipes in metal sheath	€ 80,00
	crankcase covering in INOX AISI 304 h200 mm	€ 260,00
	crankcase covering in INOX AISI 304 h300 mm	€ 280,00
	coins for self service coin box - package includes 250 pcs -	€ 250,00

OPTIONAL

Codice	Descrizione	Price
AI	predisposition for 11 peristaltic pumps for liquid detergent + Flush	€ 260,00
CY	hard water inlet valve	€ 180,00
BB	left-hand door opening	€ 120,00
DP	second drain valve - for recovery circuit -	on request
FO	crankcase h.200 mm - without covering -	€ 260,00
FQ	crankcase h.300 mm - without covering -	€ 300,00
	FOR SELF SERVICE USE:	
AM	mechanical coin box	€ 460,00
AL	electronical coin box	€ 640,00
EASY WASH CASH	Centralized cash desk with 12 selections -Wall fixing- Electronic coin box with recognition of 5 different coin denominations, banknote reader, prepaid Card reader, management of the rest, coin hopper with self-charging system, reporting service at the end of the day on SD Card, CD for accounting and statistical management of the laundry. Complete with 20 cards.	€ 6.800,00
FLGINC EWC	flange for wall recessing mounting	€ 460,00
9998SCHEDBI3	connection interface between machine and the centralized cash desk -1 card every 3 machines	€ 360,00
ERSHED EWC	card distributor	€ 1.100,00
2950CARDCHIP	electronic card with chip	€ 2,00

VOLTAGE ON REQUEST

	3ph 400/415V+N 50/60Hz		3ph 230V 50/60Hz		1ph 230V 50/60Hz		3ph 400/440V 50/60Hz	
	electric	steam hot water	electric	steam hot water	electric	steam hot water	electric	steam hot water
LM 14	standard	standard	€ 400,00	€ 400,00	€ 300,00	€ 250,00	€ 160,00	€ 160,00
LM 18	standard	standard	€ 400,00	€ 400,00	€ 300,00	€ 250,00	€ 160,00	€ 160,00
LM 23	standard	standard	€ 400,00	€ 400,00	special	special	€ 160,00	€ 160,00

PACKING

	Price
Wrapping film + woodel pallet	included
Wooden cage	€ 180,00
Wooden crate	€ 240,00

TECHNICAL DATA

	LM 14	LM 18	LM 23
Drum dimensions	700x365 mm (Ø x P)	700x470 mm (Ø x P)	700x560 mm (Ø x P)
Drum volume	141 lt	181 lt	216 lt
High spin speed	915 r.p.m.	915 r.p.m.	915 r.p.m.
G Factor	327	327	327
Water connections	2 x 3/4" Ø	2 x 3/4" Ø	2 x 3/4" Ø
Water drain	50 Ø mm	50 Ø mm	50 Ø mm
Machine dimensions: WxDxH	880x899x1285mm	880x1004x1285 mm	880x1094x1285 mm
Net weight	390 Kg	420 Kg	434 Kg
Packing dimensions : WxDxH	920x1150x1400 mm	920x1150x1400 mm	920x1150x1400 mm
Gross weight	435 Kg	451 Kg	473 Kg
Electric heating power	11 kW	14 kW	17 kW
Steam consumption	9 kg/h (Ciclo B - ISO 9398)	11 kg/h (Ciclo B - ISO 9398)	14 kg/h (Ciclo B - ISO 9398)

HIGH SPIN WASHING MACHINES

LM -Capacity 26-32 Kg

THE MOST VERSATILE



HIGHLIGHTS



- IM11 Touch Screen 7" with new graphic layout
- Unlimited programming solutions
- Total control of machine by wi-fi on the IM11
- Delay start available
- Control panel tilted for better visibility and easy use
- Programmable water, temperature, engine speed and rotation/break rate levels for total customization of washing cycles
- AISI 304 stainless steel casing and wash drum
- AISI 304 stainless steel spider
- New painted counter-wall
- New gasket on the front of the washing machine
- New mechanical door closing system
- New conical port seal
- High efficiency in spin, quiet and low vibration
- Reliable and long-life poly-v transmission belts
- Spin control system and reduction of dynamic imbalance
- Easy accessibility to every component for easy maintenance
- End-of-cycle audible warning device
- USB port
- No anchoring to the ground
- Wet-Cleaning ready

Models	Capacity		Heating	Standard Voltage 50/60 Hz	Price	
	1:9	1:10			€	
LM 26	28	27	Hot Water	3ph 400V + N	€	16.900,00
LM 26	28	27	Electric	3ph 400V + N	€	17.100,00
LM 26	28	27	Direct Steam	3ph 400V + N	€	17.460,00
LM 26	28	27	Electric + Steam	3ph 400V + N	€	17.860,00
LM 26	28	27	Indirect Steam	3ph 400V + N	€	17.940,00
LM 32	36	33	Hot Water	3ph 400V + N	€	20.600,00
LM 32	36	33	Electric	3ph 400V + N	€	20.800,00
LM 32	36	33	Direct Steam	3ph 400V + N	€	21.240,00
LM 32	36	33	Electric + Steam	3ph 400V + N	€	21.600,00
LM 32	36	33	Indirect Steam	3ph 400V + N	€	21.700,00

ACCESSORIES

Code	Description	Price
	1pc 30lt/h pump including flush + lance + tank end signal	€ 480,00
	2pc 30lt/h pump including flush + lance + tank end signal	€ 720,00
	3pc 30lt/h pump including flush + lance + tank end signal	€ 990,00
	4pc 30lt/h pump including flush + lance + tank end signal	€ 1.100,00
	5pc 30lt/h pump including flush + lance + tank end signal	€ 1.200,00
	6pc 30lt/h pump including flush + lance + tank end signal	€ 1.300,00
	water loading pipes in metal sheath	€ 180,00
	crankcase covering in INOX AISI 304 h200 mm	€ 280,00
	crankcase covering in INOX AISI 304 h300 mm	€ 300,00

OPTIONAL

Code	Description	Price
AI	predisposition for 11 peristaltic pumps for liquid detergent + flush	€ 260,00
CY	hard water inlet valve	€ 280,00
BB	left-hand door opening	on request
FO	crankcase h.200 mm - without covering -	€ 280,00
FQ	crankcase h.300 mm - without covering -	€ 320,00
DP	second drain valve - for recovery circuit -	on request

SPECIAL

DR	weighing system for laundry with load cells	on request
----	---	------------

VOLTAGE ON REQUEST

	3ph 400/415V+N 50/60Hz		3ph 230V 50/60Hz		1ph 230V 50/60Hz		3ph 400/440V 50/60Hz		3ph 115V 50/60Hz	
	electric	steam hot water	electric	steam hot water	electric	steam hot water	electric	steam hot water	electric	steam hot water
LM 26	standard	standard	special	special	not available	not available	€ 160,00	€ 160,00	not available	not available
LM 32	standard	standard	special	special	not available	not available	€ 260,00	€ 260,00	not available	not available

PACKING

	Price
Wrapping film + woodel pallet	included
Wooden cage	€ 360,00
Wooden crate	€ 600,00

TECHNICAL DATA

	LM 26	LM 32
Drum dimensions	855 x 444 mm (Ø x P)	855 x 557 mm (Ø x P)
Drum volume	254 lt	320 lt
High spin speed	915 r.p.m.	915 r.p.m.
G Factor	400	400
Water connections	2 x 3/4" Ø	2 x 3/4" Ø
Water drain	50 Ø mm	50 Ø mm
Machine dimensions: WxDxH	1100x996x1500 mm	1100x1081x1500 mm
Net weight	530 Kg	548 Kg
Packing dimensions : WxDxH	1120x1130x1550 mm	1120x1130x1550 mm
Gross weight	555 Kg	573 Kg
Electric heating power	24 kW	24 kW
Steam consumption	2 kg/h (Cycle B - ISO 9398)	4 kg/h (Cycle B - ISO 9398)

LM -Capacity 40-55 Kg

STURDY AND RELIABLE



HIGHLIGHTS



- IM11 Touch Screen 7" with new graphic layout
- Unlimited programming solutions
- Total control of machine by wi-fi on the IM11
- Delay start available
- AISI 304 stainless steel casing and wash drum
- AISI 304 stainless steel spider
- Programmable water, temperature, engine speed and rotation/break rate levels for total customization of washing cycles
- Balanced hot/cold water fill for energy saving
- Balancing system: vertical and horizontal shock absorbers for a maximum stability and low noise
- Spin control system and reduction of dynamic imbalance
- New mechanical door closing system
- End-of-cycle audible warning device
- Compatible with water recovery tanks
- Safety fixation through anchor bolts - not included -

Models	Capacity		Heating	Standard Voltage 50/60 Hz	Price
	1:9	1:10			
LM 40	44	40	Hot Water	3ph 400V + N	€ 31.700,00
LM 40	44	40	Electric	3ph 400V + N	€ 31.800,00
LM 40	44	40	Direct Steam	3ph 400V + N	€ 32.300,00
LM 40	44	40	Electric + Steam	3ph 400V + N	€ 32.800,00
LM 40	44	40	Indirect Steam	3ph 400V + N	€ 32.900,00
LM 55	63	56	Hot Water	3ph 400V + N	€ 36.700,00
LM 55	63	56	Electric	3ph 400V + N	€ 36.800,00
LM 55	63	56	Direct Steam	3ph 400V + N	€ 36.900,00
LM 55	63	56	Electric + Steam	3ph 400V + N	€ 37.400,00
LM 55	63	56	Indirect Steam	3ph 400V + N	€ 37.500,00

ACCESSORIES

Code	Description	Price
	1pc 30lt/h pump including flush + lance + tank end signal	€ 480,00
	2pc 30lt/h pump including flush + lance + tank end signal	€ 720,00
	3pc 30lt/h pump including flush + lance + tank end signal	€ 990,00
	4pc 30lt/h pump including flush + lance + tank end signal	€ 1.100,00
	5pc 30lt/h pump including flush + lance + tank end signal	€ 1.200,00
	6pc 30lt/h pump including flush + lance + tank end signal	€ 1.300,00
	water loading pipes in metal sheath	€ 180,00

OPTIONAL

Code	Description	Price
AI	predisposition for 11 peristaltic pumps for liquid detergent + flush	€ 260,00
AT	unloading laundry system (tilting1) 1 way	€ 8.800,00
AU	loading/unloading laundry system (tilting2) 2 way	€ 9.900,00
CY	hard water inlet valve	€ 380,00
BB	left-hand door opening	on request
GQ	Easy download	€ 100,00
DP	second drain valve - for recovery circuit -	on request

SPECIAL

DR	weighing system for laundry with load cells - NOT for tilting models -	on request
----	--	------------

VOLTAGE ON REQUEST

	3ph 400/415V+N 50/60Hz		3ph 230V 50/60Hz		1ph 230V 50/60Hz		3ph 400/440V 50/60Hz		3ph 115V 50/60Hz	
	electric	steam hot water	electric	steam hot water	electric	steam hot water	electric	steam hot water	electric	steam hot water
LM 40	standard	standard	€ 1.200,00	€ 1.200,00	not available	not available	€ 240,00	€ 240,00	not available	not available
LM 55	standard	standard	special	special	not available	not available	€ 240,00	€ 240,00	not available	not available

PACKING

	Price
Wrapping film + wooden pallet	included
Wooden cage	€ 360,00
Wooden crate	€ 600,00

TECHNICAL DATA

	LM 40	LM 55
Drum dimensions	880 x 650 mm (Ø x P)	1080 x 603 mm (Ø x P)
Drum volume	400 lt	562 lt
High spin speed	802 r.p.m.	802 r.p.m.
G Factor	351	351
Water connections	2 x 1" 1/2 Ø	2 x 1"1/2 Ø
Water drain	80 Ø mm	80 Ø mm
Machine dimensions: WxDxH	1540x1452x1770 mm	1540x1667x1770 mm
Net weight	1490 Kg	1680 Kg
Packing dimensions : WxDxH	1700x1540x1910 mm	1700x1540x1910 mm
Gross weight	1540 Kg	1806 Kg
Electric heating power	29 kW	36 kW
Steam consumption	28 kg/h (Cycle B - ISO9398)	39 kg/h (Cycle B - ISO9398)

LM -Capacity 70-85 Kg

**WHEN THE OUTPUT
IS REMARKABLE**



HIGHLIGHTS



- IM11 Touch Screen 7" with new graphic layout
- Unlimited programming solutions
- Total control of machine by wi-fi on the IM11
- Delay start available
- AISI 304 stainless steel casing and wash drum
- AISI 304 stainless steel spider
- Programmable water, temperature, engine speed and rotation/break rate levels for total customization of washing cycles
- Balanced hot/cold water fill for energy saving
- Balancing system: vertical and horizontal shock absorbers for a maximum stability and low noise
- Spin control system and reduction of dynamic imbalance
- New mechanical door closing system
- End-of-cycle audible warning device
- Compatible with water recovery tanks
- Safety fixation through anchor bolts - not included -

Models	Capacity		Heating	Standard Voltage 50/60 Hz	Price
	1:9	1:10			
LM 70	78	70	Hot Water	3ph 400V + N	€ 43.900,00
LM 70	78	70	Electric	3ph 400V + N	€ 44.000,00
LM 70	78	70	Direct Steam	3ph 400V + N	€ 44.000,00
LM 70	78	70	Electric + Steam	3ph 400V + N	€ 44.500,00
LM 70	78	70	Indirect Steam	3ph 400V + N	€ 45.000,00
LM 85	94	85	Hot Water	3ph 400V + N	€ 49.700,00
LM 85	94	85	Electric	3ph 400V + N	€ 49.800,00
LM 85	94	85	Direct Steam	3ph 400V + N	€ 49.900,00
LM 85	94	85	Electric + Steam	3ph 400V + N	€ 50.400,00
LM 85	94	85	Indirect Steam	3ph 400V + N	€ 50.500,00

ACCESSORIES

Code	Description	Price
	1pc 30lt/h pump including flush + lance + tank end signal	€ 480,00
	2pc 30lt/h pump including flush + lance + tank end signal	€ 720,00
	3pc 30lt/h pump including flush + lance + tank end signal	€ 990,00
	4pc 30lt/h pump including flush + lance + tank end signal	€ 1.100,00
	5pc 30lt/h pump including flush + lance + tank end signal	€ 1.200,00
	6pc 30lt/h pump including flush + lance + tank end signal	€ 1.300,00
	water loading pipes in metal sheath	€ 180,00

OPTIONAL

Code	Description	Price
AI	predisposition for 11 peristaltic pumps for liquid detergent + flush	€ 260,00
AT	unloading laundry system (tilting1) 1 way	€ 8.800,00
AU	loading/unloading laundry system (tilting2) 2 way	€ 9.900,00
CY	hard water inlet valve	€ 380,00
BB	left-hand door opening	on request
GQ	Easy download	€ 100,00
DP	second drain valve - for recovery circuit -	on request
SPECIAL		
DR	weighing system for laundry with load cells - not for tilting models -	on request

VOLTAGE ON REQUEST

	3ph 400/415V+N 50/60Hz		3ph 230V 50/60Hz		3ph 400/440V 50/60Hz	
	electric	steam hot water	electric	steam hot water	electric	steam hot water
LM 70	standard	standard	special	special	€ 240,00	€ 240,00
LM 85	standard	standard	special	special	€ 240,00	€ 240,00

PACKING

	Price
Wrapping film + wooden pallet	included
Wooden cage	€ 360,00
Wooden crate	€ 600,00

TECHNICAL DATA

	LM 70	LM 85
Drum dimensions	1200 x 618 mm (Ø x P)	1200x 750 mm (Ø x P)
Drum volume	700 lt	850 lt
High spin speed	723 r.p.m.	723 r.p.m.
G Factor	351	351
Water connections	2 x 1"1/2 Ø	2 x 1"1/2" Ø
Water drain	80 Ø mm	80 Ø mm
Machine dimensions: WxDxH	1700x1479x2020 mm	1700x1611x2020 mm
Net weight	1790 Kg	1900 Kg
Packing dimensions : WxDxH	1750x1540x2200 mm	1750x1650x2200 mm
Gross weight	1840 Kg	1960 Kg
Electric heating power	38 kW	40 kW
Steam consumption	52 kg/h (Cycle B - ISO9398)	63 kg/h (Cycle B - ISO9398)

LM -Capacity 100-125 Kg

BIG PERFORMANCE



HIGHLIGHTS



- IM11 Touch Screen 7" with new graphic layout
- Unlimited programming solutions
- Total control of machine by wi-fi on the IM11
- Double pneumatic door lock system and 180° door opening for easy laundry loading and unloading operations
- AISI 304 stainless steel casing and wash drum
- AISI 304 stainless steel spider
- Programmable water, temperature, engine speed and rotation/break rate levels for total customization of washing cycles
- Balanced water fill: hot and cold water are mixed during the filling phase for energy saving
- Easy download as standard: possibility of automatic rotation of the basket to facilitate the unloading of the linen
- On request, laundry weighing system to optimize the energy consumption according to the load
- Easy access to all mechanical and electronic parts for easy maintenance
- End-of-cycle audible warning device
- Compatible with water recovery tank
- Predisposition for 11 peristaltic pumps for liquid detergent + flush
- Compressed air requested
- Safety fastening by means of anchors (not included)

Models	Capacity		Heating	Standard Voltage 50/60 Hz	Price	
	1:9	1:10			€	
LM 100	111	101	Hot Water	3ph 400V + N	€	61.550,00
LM 100	111	101	Direct Steam	3ph 400V + N	€	61.550,00
LM 100	111	101	Indirect Steam	3ph 400V + N	€	66.500,00
LM 125	139	125	Hot Water	3ph 400V + N	€	65.800,00
LM 125	139	125	Direct Steam	3ph 400V + N	€	65.800,00
LM 125	139	125	Indirect Steam	3ph 400V + N	€	66.700,00

ACCESSORIES

Code	Description	Price
	1pc 30lt/h pump including flush + lance + tank end signal	€ 480,00
	2pc 30lt/h pump including flush + lance + tank end signal	€ 720,00
	3pc 30lt/h pump including flush + lance + tank end signal	€ 990,00
	4pc 30lt/h pump including flush + lance + tank end signal	€ 1.100,00
	5pc 30lt/h pump including flush + lance + tank end signal	€ 1.200,00
	6pc 30lt/h pump including flush + lance + tank end signal	€ 1.300,00
	water loading pipes in metal sheath	€ 340,00

OPTIONAL

Code	Description	Price
CY	hard water inlet valve	€ 500,00
DP	second drain valve - for recovery circuit -	on request
SPECIAL		
DR	weighing system for laundry with load cells - not for tilting models -	on request

VOLTAGE ON REQUEST

	3ph 400/415V+N 50/60Hz		3ph 230V 50/60Hz		3ph 400/440V 50/60Hz	
	electric	steam hot water	electric	steam hot water	electric	steam hot water
LM 100	special	standard	special	special	special	on request
LM 125	special	standard	special	special	special	on request

PACKING

	Price
Wrapping film + wooden pallet	included
Wooden cage	€ 500,00
Wooden crate	€ 700,00

TECHNICAL DATA

	LM 100	LM 125
Drum dimensions	1270 x 878 mm (Ø x P)	1270 x 1074 mm (Ø x P)
Drum volume	1000 lt	1250 lt
High spin speed	700 r.p.m.	700 r.p.m.
G Factor	347	347
Water connections	2 x 1" 1/2 Ø	2 x 1" 1/2 Ø
Water drain	80 Ø mm	2 x 80 Ø mm
Machine dimensions: WxDxH	1700x1644x2065 mm	1700x1834x2065 mm
Net weight	1990 Kg	2074 Kg
Packing dimensions : WxDxH	1740x1735x2260 mm	1800x1925x2260 mm
Gross weight	2050 Kg	2141 Kg
Steam heating consumption	2,7 kg	3,4 kg

LM -Capacity 100-125 Kg Tilting

HIGHLIGHTS



BIG PERFORMANCE



- Tilting1: unloading laundry system - 1 way
- Tilting2: loading/unloading laundry system - 2 ways
- IM11 Touch Screen 7" with new graphic layout
- Unlimited programming solutions
- Total control of machine by wi-fi on the IM11
- Double pneumatic door lock system and 180° door opening for easy laundry loading and unloading operations
- AISI 304 stainless steel casing and wash drum
- AISI 304 stainless steel spider
- Programmable water, temperature, engine speed and rotation/break rate levels for total customization of washing cycles
- Balanced water fill: hot and cold water are mixed during the filling phase for energy saving
- Easy download as standard: possibility of automatic rotation of the basket to facilitate the laundry unloading operation
- Easy access to all mechanical and electronic parts for easy maintenance
- End-of-cycle audible warning device
- Compatible with water recovery tank
- Compressed air requested
- Predisposition for 11 peristaltic pumps for liquid detergent + flush
- Safety fastening by means of anchors (not included)

Models	Capacity		Tilting	Heating	Standard Voltage 50/60 Hz	Price
	1:9	1:10				
LM 100 Tilting 1	111	101	Forwards	Hot Water	3ph 400V + N	€ 69.000,00
LM 100 Tilting 1	111	101	Forwards	Direct Steam	3ph 400V + N	€ 69.000,00
LM 100 Tilting 1	111	101	Forwards	Indirect Steam	3ph 400V + N	€ 70.900,00
LM 100 Tilting 2	111	101	Forwards + Backwards	Hot Water	3ph 400V + N	€ 74.500,00
LM 100 Tilting 2	111	101	Forwards + Backwards	Direct Steam	3ph 400V + N	€ 74.500,00
LM 100 Tilting 2	111	101	Forwards + Backwards	Indirect Steam	3ph 400V + N	€ 76.400,00
LM 125 Tilting 1	139	125	Forwards	Hot Water	3ph 400V + N	€ 73.300,00
LM 125 Tilting 1	139	125	Forwards	Direct Steam	3ph 400V + N	€ 73.300,00
LM 125 Tilting 1	139	125	Forwards	Indirect Steam	3ph 400V + N	€ 74.200,00
LM 125 Tilting 2	139	125	Forwards + Backwards	Hot Water	3ph 400V + N	€ 78.800,00
LM 125 Tilting 2	139	125	Forwards + Backwards	Direct Steam	3ph 400V + N	€ 78.800,00
LM 125 Tilting 2	139	125	Forwards + Backwards	Indirect Steam	3ph 400V + N	€ 79.700,00

ACCESSORIES

Code	Description	Price
	1pc 30lt/h pump including flush + lance + tank end signal	€ 480,00
	2pc 30lt/h pump including flush + lance + tank end signal	€ 720,00
	3pc 30lt/h pump including flush + lance + tank end signal	€ 990,00
	4pc 30lt/h pump including flush + lance + tank end signal	€ 1.100,00
	5pc 30lt/h pump including flush + lance + tank end signal	€ 1.200,00
	6pc 30lt/h pump including flush + lance + tank end signal	€ 1.300,00
	water loading pipes in metal sheath	€ 340,00

OPTIONAL

Code	Description	Price
CY	hard water inlet valve	€ 500,00
DP	second drain valve - for recovery circuit -	on request

VOLTAGE ON REQUEST

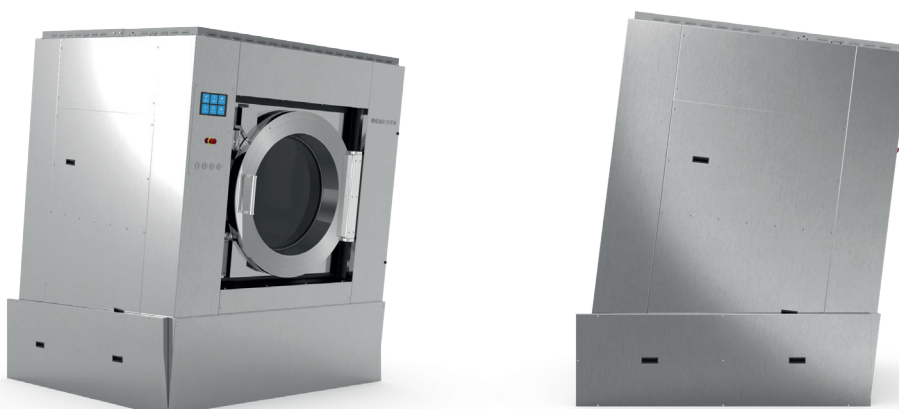
	3ph 400/415V+N 50/60Hz		3ph 230V 50/60Hz		3ph 400/445V 50/60Hz	
	electric	steam hot water	electric	steam hot water	electric	steam hot water
LM 100	special	standard	special	special	special	on request
LM 125	special	standard	special	special	special	on request

PACKING

	Price
Wrapping film + wooden pallet	included
Wooden cage	€ 500,00
Wooden crate	€ 700,00

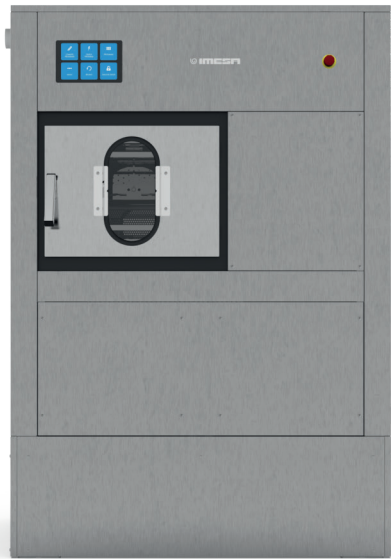
TECHNICAL DATA

	LM 100 Tilting	LM 125 Tilting
Drum dimensions	1270 x 878 mm (Ø x P)	1270 x 1074 mm (Ø x P)
Drum volume	1000 lt	1250 lt
High spin speed	700 r.p.m.	700 r.p.m.
G Factor	347	347
Water connections	2 x 1" 1/2 Ø	2 x 1" 1/2 Ø
Water drain	80 Ø mm	2 x 80 Ø mm
Machine dimensions: WxDxH	1783x1670x2170mm	1783x1860x2170 mm
Net weight	1990 Kg	2074 Kg
Packing dimensions : WxDxH	1800x1925x2320 mm	1800x1925x2320 mm
Gross weight	2050 Kg	2141 Kg
Steam heating consumption	2,7 kg	3,4 Kg



D2W -Capacity 18-23 Kg

HYGIENE AND EFFICIENCY



HIGHLIGHTS



- Two separate doors on DIRTY and CLEAN sides
- IM11 - Capacity 7" Touch Screen - DIRTY Side
- IM10 - Touch Screen on CLEAN side with display for washing cycle status control also from the aseptic room
- Total control of wash cycles by wi-fi on the IM11
- Unlimited programming solutions
- AISI 304 stainless steel casing and wash drum
- AISI 304 stainless steel spider
- Electronic control of door opening to avoid opening errors and any kind of contamination
- Automatic drum positioning for easy opening
- Maximum ergonomics in laundry loading operations thanks to raised base on which the washing machine is mounted
- Cold and hot water connections
- End-of-cycle audible warning device
- Compatible with water recovery tank
- No anchoring to the ground

Models	Capacity		Heating	Standard Voltage 50/60 Hz	Price	
	1:9	1:10			€	
D2W 18	20	18	Electric	3ph 400V + N	€	22.400,00
D2W 18	20	18	Direct Steam	3ph 400V + N	€	22.860,00
D2W 18	20	18	Electric + Steam	3ph 400V + N	€	23.260,00
D2W 18	20	18	Indirect Steam	3ph 400V + N	€	23.340,00
D2W 23	24	23	Electric	3ph 400V + N	€	24.600,00
D2W 23	24	23	Direct Steam	3ph 400V + N	€	24.980,00
D2W 23	24	23	Electric + Steam	3ph 400V + N	€	25.680,00
D2W 23	24	23	Indirect Steam	3ph 400V + N	€	25.950,00

ACCESSORIES

Code	Description	Price
	1pc 30lt/h pump including flush + lance + tank end signal	€ 480,00
	2pc 30lt/h pump including flush + lance + tank end signal	€ 720,00
	3pc 30lt/h pump including flush + lance + tank end signal	€ 990,00
	4pc 30lt/h pump including flush + lance + tank end signal	€ 1.100,00
	5pc 30lt/h pump including flush + lance + tank end signal	€ 1.200,00
	6pc 30lt/h pump including flush + lance + tank end signal	€ 1.300,00
	water loading pipes in metal sheath	€ 260,00
	aseptic profile (frame)	on request

OPTIONAL

Code	Description	Price
AI	predisposition for 11 peristaltic pumps for liquid detergent + flush	€ 260,00
CY	hard water inlet valve	€ 200,00
DP	second drain valve - for recovery circuit -	on request

VOLTAGE ON REQUEST

	3ph 400/415V+N 50/60Hz		3ph 230V 50/60Hz		1ph 230V 50/60Hz		3ph 400/440V 50/60Hz	
	electric	steam hot water	electric	steam hot water	electric	steam hot water	electric	steam hot water
D2W 18	standard	standard	€ 400,00	€ 400,00	€ 300,00	€ 250,00	€ 160,00	€ 160,00
D2W 23	standard	standard	€ 400,00	€ 400,00	special	special	€ 160,00	€ 160,00

PACKING

	Price
Wrapping film + wooden pallet	included
Wooden cage	€ 360,00
Wooden crate	€ 600,00

TECHNICAL DATA

	D2W18	D2W23
Drum dimensions	700 x 470 mm (Ø x P)	700 x 560 mm (Ø x P)
Drum volume	180 lt	215 lt
High spin speed	947 r.p.m.	947 r.p.m.
G Factor	350	350
Water connections	2 x 3/4" Ø	2 x 3/4" Ø
Water drain	50 Ø mm	50 Ø mm
Machine dimensions: WxDxH	980x967x1570 mm	1070x967x1570 mm
Net weight	537 Kg	551 Kg
Packing dimensions : WxDxH	1150x1100x1690 mm	1150x1100x1690 mm
Gross weight	564 Kg	578 Kg
Electric heating power	12 kW	15 kW
Steam consumption	1,2 Kg	1,8 kg



D2W -Capacity 30-55 Kg

HYGIENE AND EFFICIENCY



HIGHLIGHTS



- Two separate doors on DIRTY and CLEAN sides
- IM11 - Capacity 7" Touch Screen - DIRTY Side
- IM10 - Touch Screen on CLEAN side with display for washing cycle status control also from the aseptic room
- Total control of wash cycles by wi-fi on the IM11
- Unlimited programming solutions
- AISI 304 stainless steel casing and drum
- AISI 304 stainless steel spider
- Electronic control of door opening to avoid opening errors and any kind of contamination
- Automatic drum positioning for easy opening
- Cold and hot water connections
- End-of-cycle audible warning device
- Compatible with water recovery tank
- Safety fastening by means of anchors (not included)
- Air compressed is requested

Models	Capacity		Heating	Standard Voltage 50/60 Hz	Price	
	1:9	1:10			€	
D2W 30	35	32	Electric	3ph 400V + N	€	33.900,00
D2W 30	35	32	Direct Steam	3ph 400V + N	€	34.340,00
D2W 30	35	32	Electric + Steam	3ph 400V + N	€	34.740,00
D2W 30	35	32	Indirect Steam	3ph 400V + N	€	34.980,00
D2W 55	63	56	Electric	3ph 400V + N	€	50.700,00
D2W 55	63	56	Direct Steam	3ph 400V + N	€	51.400,00
D2W 55	63	56	Electric + Steam	3ph 400V + N	€	51.900,00
D2W 55	63	56	Indirect Steam	3ph 400V + N	€	51.980,00

ACCESSORIES

Code	Description	Price
	1pc 30lt/h pump including flush + lance + tank end signal	€ 480,00
	2pc 30lt/h pump including flush + lance + tank end signal	€ 720,00
	3pc 30lt/h pump including flush + lance + tank end signal	€ 990,00
	4pc 30lt/h pump including flush + lance + tank end signal	€ 1.100,00
	5pc 30lt/h pump including flush + lance + tank end signal	€ 1.200,00
	6pc 30lt/h pump including flush + lance + tank end signal	€ 1.300,00
	water loading pipes in metal sheath	€ 960,00
	aseptic profile (frame)	on request

OPTIONAL

Code	Description	Price
AI	predisposition for 11 peristaltic pumps for liquid detergent + flush	€ 260,00
CY	hard water inlet valve	€ 400,00
DP	second drain valve - for recovery circuit -	on request
SPECIAL		
DR	weighing system for laundry with load cells - NOT for tilting models -	on request

VOLTAGE ON REQUEST

	3ph 400/415V+N 50/60Hz		3ph 230V 50/60Hz		1ph 230V 50/60Hz		3ph 400/440V 50/60Hz	
	electric	steam hot water	electric	steam hot water	electric	steam hot water	electric	steam hot water
D2W 30	standard	standard	€ 1.200,00	€ 1.200,00	not available	not available	€ 240,00	€ 240,00
D2W 55	standard	standard	special	special	not available	not available	€ 240,00	€ 240,00

PACKING

	Price
Wrapping film + wooden pallet	included
Wooden cage	€ 440,00
Wooden crate	€ 600,00

TECHNICAL DATA

	D2W30	D2W55
Drum dimensions	880 x 523 mm (Ø x P)	977 x 753 mm (Ø x P)
Drum volume	318 lt	565 lt
High spin speed	846 r.p.m.	802 r.p.m.
G Factor	346	350
Water connections	2 x 1" Ø	2 x 1 1/2" Ø
Water drain	80 Ø mm	80 Ø mm
Machine dimensions: WxDxH	1166x1373x1968 mm	1622x1686x1948 mm
Net weight	1066 Kg	1874 Kg
Packing dimensions : WxDxH	1350x1373x2100 mm	1658x1700x2120 mm
Gross weight	1096 Kg	1926 Kg
Electric heating power	24 kW	30 kW
Steam consumption	3 kg	6 kg



RC -Capacity 11 Kg

**SMALL CAPACITY,
PERFORMANCE OF A BIG STAR**



HIGHLIGHTS



- IM11 Touch Screen 7" with new graphic layout
- Unlimited programming solutions
- Total control of machine by wi-fi via the IM11
- Delay start available
- Control panel tilted for better visibility and easy use
- Programmable water, temperature, engine speed and rotation/break rate levels for total customization of washing cycles
- AISI 304 stainless steel casing and wash drum
- AISI 304 stainless steel spider
- Balanced hot/cold water fill for energy saving
- End-of-cycle audible warning device
- USB port
- Need of fixing to the floor - fisher included -

Models	Capacity		Heating	Standard Voltage 50/60 Hz	Price	
	1:9	1:10			€	
RC 11	12	11	Hot Water	1ph 230V	€	6.760,00
RC 11	12	11	Electric	3ph 400V + N	€	6.800,00
RC 11	12	11	Direct Steam	3ph 400V + N	€	7.120,00
RC 11	12	11	Electric + Steam	3ph 400V + N	€	7.400,00
RC 11	12	11	Indirect Steam	1ph 230V	€	7.500,00

ACCESSORIES

Code	Description	Price
	1pc 30lt/h pump including flush + lance + tank end signal	€ 480,00
	2pc 30lt/h pump including flush + lance + tank end signal	€ 720,00
	3pc 30lt/h pump including flush + lance + tank end signal	€ 990,00
	4pc 30lt/h pump including flush + lance + tank end signal	€ 1.100,00
	5pc 30lt/h pump including flush + lance + tank end signal	€ 1.200,00
	6pc 30lt/h pump including flush + lance + tank end signal	€ 1.300,00
	drain pump kit	€ 960,00
	water loading pipes in metal sheath	€ 80,00
	coins for self service coin box - package includes 250 pcs -	€ 250,00

OPTIONAL

Code	Description	Price
AI	predisposition for 11 peristaltic pumps for liquid detergent + flush	€ 260,00
CY	hard water inlet valve	€ 180,00
BB	left-hand door opening	€ 120,00
DP	second drain valve - for recovery circuit - FOR SELF SERVICE USE:	on request
AM	mechanical coin box	€ 460,00
AL	electronical coin box	€ 640,00

VOLTAGE ON REQUEST

	3ph 400/415V+N 50/60Hz		3ph 230V 50/60Hz		1ph 230V 50/60Hz		3ph 400/440V 50/60Hz		3ph 115V 50/60Hz	
	electric	steam hot water	electric	steam hot water	electric	steam hot water	electric	steam hot water	electric	steam hot water
RC 11	standard	std.1ph230V	€ 240,00	std.1ph230V	€ 130,00	standard	€ 220,00	€ 220,00	special	special

PACKING

	Price
Wrapping film + wooden pallet	included
Wooden cage	€ 160,00
Wooden crate	€ 200,00

TECHNICAL DATA

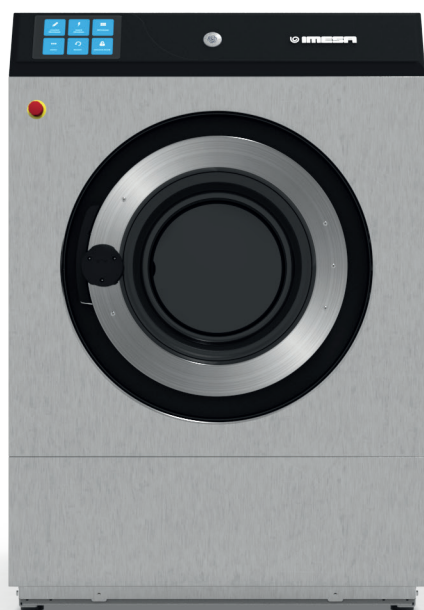
RC 11

Drum dimensions	535 x 470 mm (Ø x P)
Drum volume	105 lt
High spin speed	535 r.p.m.
G Factor	85
Water connections	2 x 3/4" Ø
Water drain	50 Ø mm
Machine dimensions: WxDxH	720x933x1087 mm
Net weight	207 Kg
Packing dimensions : WxDxH	760x1040x1200 mm
Gross weight	215 Kg
Electric heating power	9 kW
Steam consumption	0,2 kg

RC -Capacity 18-23 Kg

HIGHLIGHTS

THE MOST WANTED



- IM11 Touch Screen 7" with new graphic layout
- Unlimited programming solutions
- Total control of machine by wi-fi on the IM11
- Delay start available
- Control panel tilted for better visibility and easy use
- New painted counter-wall
- New gasket on the front of the washing machine
- New mechanical door closing system
- New conical port seal
- Programmable water, temperature, engine speed and rotation/break rate levels for total customization of washing cycles
- AISI 304 stainless steel casing and wash drum
- AISI 304 stainless steel spider
- Easily removable lower front panel for easy maintenance of exhaust valve and shock absorber control
- Balanced hot/cold water fill for energy saving
- End-of-cycle audible warning device
- USB port
- Need of fixing to the floor - fisher included -

Models	Capacity		Heating	Standard Voltage 50/60 Hz	Price
	1:9	1:10			
RC 18	20	18	Hot Water	1ph 230V	€ 9.260,00
RC 18	20	18	Electric	3ph 400V + N	€ 9.300,00
RC 18	20	18	Direct Steam	1ph 230V	€ 9.590,00
RC 18	20	18	Electric + Steam	3ph 400V + N	€ 9.980,00
RC 18	20	18	Indirect Steam	1ph 230V	€ 9.990,00
RC 23	24	23	Hot Water	1ph 230V	€ 11.560,00
RC 23	24	23	Electric	3ph 400V + N	€ 11.600,00
RC 23	24	23	Direct Steam	1ph 230V	€ 11.940,00
RC 23	24	23	Electric + Steam	3ph 400V + N	€ 12.360,00
RC 23	24	23	Indirect Steam	1ph 230V	€ 12.390,00

ACCESSORIES

Code	Description	Price
	1pc 30lt/h pump including flush + lance + tank end signal	€ 480,00
	2pc 30lt/h pump including flush + lance + tank end signal	€ 720,00
	3pc 30lt/h pump including flush + lance + tank end signal	€ 990,00
	4pc 30lt/h pump including flush + lance + tank end signal	€ 1.100,00
	5pc 30lt/h pump including flush + lance + tank end signal	€ 1.200,00
	6pc 30lt/h pump including flush + lance + tank end signal	€ 1.300,00
	drain pump kit	€ 960,00
	water loading pipes in metal sheath	€ 80,00
	coins for self service coin box - package includes 250 pcs -	€ 250,00

OPTIONAL

Code	Description	Price
AI	predisposition for 11 peristaltic pumps for liquid detergent + flush	€ 260,00
CY	hard water inlet valve	€ 180,00
BB	left-hand door opening	€ 120,00
DP	second drain valve - for recovery circuit - FOR SELF SERVICE USE:	on request
AM	mechanical coin box	€ 460,00
AL	electronical coin box	€ 640,00

VOLTAGE ON REQUEST

	3ph 400/415V+N 50/60Hz		3ph 230V 50/60Hz		1ph 230V 50/60Hz		3ph 400/440V 50/60Hz		3ph 115V 50/60Hz	
	electric	steam hot water	electric	steam hot water	electric	steam hot water	electric	steam hot water	electric	steam hot water
RC 18	standard	std.1ph230V	€ 500,00	std.1ph230V	€ 130,00	standard	€ 220,00	€ 220,00	special	special
RC 23	standard	std.1ph230V	€ 500,00	std.1ph230V	€ 130,00	standard	€ 220,00	€ 220,00	special	special

PACKING

	Price
Wrapping film + wooden pallet	included
Wooden cage	€ 180,00
Wooden crate	€ 240,00

TECHNICAL DATA

	RC 18	RC 23
Drum dimensions	700 x 470 mm (Ø x P)	700 x 560 mm (Ø x P)
Drum volume	180 lt	215 lt
High spin speed	568 r.p.m.	568 r.p.m.
G Factor	126	126
Water connections	2 x 3/4" Ø	2 x 3/4" Ø
Water drain	50 Ø mm	50 Ø mm
Machine dimensions: WxDxH	880x1010x1312 mm	880x1100x1312 mm
Net weight	307 Kg	318 Kg
Packing dimensions : WxDxH	920x1150x1430 mm	920x1150x1430 mm
Gross weight	323 Kg	333 Kg
Electric heating power	12 kW	15 kW
Steam consumption	0,4 Kg	0,6 Kg

LOW SPIN WASHING MACHINES

RC -Capacity 30 Kg

**LOW SPIN,
HIGH PERFORMANCE**



HIGHLIGHTS



- IM11 Touch Screen 7" with new graphic layout
- Unlimited programming solutions
- Total control of machine by wi-fi on the IM11
- Delay start available
- Programmable water, temperature, engine speed and rotation/break rate levels for total customization of washing cycles
- AISI 304 stainless steel casing and wash drum
- AISI 304 stainless steel spider
- New painted counter-wall
- New gasket on the front of the washing machine
- New mechanical door closing system
- New conical port seal
- Balanced hot/cold water fill for energy saving
- End-of-cycle audible warning device
- USB port
- Need of fixing to the ground - subframe included -

Models	Capacity		Heating	Standard Voltage 50/60 Hz	Price
	1:9	1:10			
RC 30	35	32	Hot Water	3ph 400V + N	€ 13.600,00
RC 30	35	32	Electric	3ph 400V + N	€ 13.700,00
RC 30	35	32	Direct Steam	3ph 400V + N	€ 14.100,00
RC 30	35	32	Electric+Steam	3ph 400V + N	€ 14.500,00
RC 30	35	32	Indirect Steam	3ph 400V + N	€ 14.600,00

ACCESSORIES

Code	Description	Price
	1pc 30lt/h pump including flush + lance + tank end signal	€ 480,00
	2pc 30lt/h pump including flush + lance + tank end signal	€ 720,00
	3pc 30lt/h pump including flush + lance + tank end signal	€ 990,00
	4pc 30lt/h pump including flush + lance + tank end signal	€ 1.100,00
	5pc 30lt/h pump including flush + lance + tank end signal	€ 1.200,00
	6pc 30lt/h pump including flush + lance + tank end signal	€ 1.300,00
	water loading pipes in metal sheath	€ 180,00

OPTIONAL

Code	Description	Price
AI	predisposition for 11 peristaltic pumps for liquid detergent + flush	€ 260,00
CY	hard water inlet valve	€ 400,00
DP	second drain valve - for recovery circuit -	on request

SPECIAL

BB	left-hand door opening	on request
----	------------------------	------------

VOLTAGE ON REQUEST

	3ph 400/415V+N 50/60Hz		3ph 230V 50/60Hz		3ph 400/440V 50/60Hz	
	electric	steam hot water	electric	steam hot water	electric	steam hot water
RC 30	standard	standard	€ 1.360,00	€ 1.360,00	€ 220,00	€ 220,00

PACKING

	Price
Wrapping film + wooden pallet	included
Wooden cage	€ 360,00
Wooden crate	€ 600,00

TECHNICAL DATA

	RC 30
Drum dimensions	880 x 523 mm (Ø x P)
Drum volume	320 lt
High spin speed	452 r.p.m.
G Factor	100
Water connections	2 x 3/4" Ø
Water drain	80 Ø mm
Machine dimensions: WxDxH	1098x946x1433 mm
Net weight	480 Kg
Packing dimensions : WxDxH	1100x1150x1750 mm
Gross weight	525 Kg
Electric heating power	24 kW
Steam consumption	0,8 Kg

ZP SERIE HYDROEXTRACTOR



HIGHLIGHTS

- Drum and outer drum made of polished stainless steel sheet
- Base in cast iron
- Mechanical timer 0-15 min
- Motor with special thermal protection, insulated against humidity
- Equipped with a second winding to stop at the end of the cycle
- 3ph 400V + N 50/60 Hz (different on request)

Models	Capacity 1:4,5	R.P.M.	Price
ZP 450	12	1.450	€ 7.980,00
ZP 635	20	1.450	€ 12.980,00
ZP 730	30	1.500	€ 18.800,00

RC -Capacity 40-55 Kg

**LOW SPIN,
HIGH PERFORMANCE**



HIGHLIGHTS



- IM11 Touch Screen 7" with new graphic layout
- Unlimited programming solutions
- Total control of machine by wi-fi on the IM11
- Delay start available
- Programmable water, temperature, engine speed and rotation/break rate levels for total customization of washing cycles
- AISI 304 stainless steel casing and wash drum
- AISI 304 stainless steel spider
- New mechanical door closing system
- Balanced hot/cold water fill to save energy
- New air flow system of the electrical panel for improved efficiency on RC40 model
- End-of-cycle audible warning device
- USB port
- Need of fixing to the ground - subframe included -

Models	Capacity		Heating	Standard Voltage 50/60 Hz	Price	
	1:9	1:10			€	
RC 40	44	40	Hot Water	3ph 400V + N	€	15.300,00
RC 40	44	40	Electric	3ph 400V + N	€	15.400,00
RC 40	44	40	Direct Steam	3ph 400V + N	€	15.920,00
RC 40	44	40	Electric+Steam	3ph 400V + N	€	16.400,00
RC 40	44	40	Indirect Steam	3ph 400V + N	€	16.500,00
RC 55	63	56	Hot Water	3ph 400V + N	€	21.800,00
RC 55	63	56	Electric	3ph 400V + N	€	21.960,00
RC 55	63	56	Direct Steam	3ph 400V + N	€	22.200,00
RC 55	63	56	Electric+Steam	3ph 400V + N	€	22.700,00
RC 55	63	56	Indirect Steam	3ph 400V + N	€	22.990,00

ACCESSORIES

Code	Description	Price
	1pc 30lt/h pump including flush + lance + tank end signal	€ 480,00
	2pc 30lt/h pump including flush + lance + tank end signal	€ 720,00
	3pc 30lt/h pump including flush + lance + tank end signal	€ 990,00
	4pc 30lt/h pump including flush + lance + tank end signal	€ 1.100,00
	5pc 30lt/h pump including flush + lance + tank end signal	€ 1.200,00
	6pc 30lt/h pump including flush + lance + tank end signal	€ 1.300,00
	water loading pipes in metal sheath	€ 180,00

OPTIONAL

Code	Description	Price
AI	predisposition for 11 peristaltic pumps for liquid detergent + flush	€ 260,00
CY	hard water inlet valve	€ 400,00
DP	second drain valve - for recovery circuit -	on request

VOLTAGE ON REQUEST

	3ph 400/415V+N 50/60Hz		3ph 230V 50/60Hz		3ph 400/440V 50/60Hz	
	electric	steam hot water	electric	steam hot water	electric	steam hot water
RC 40	standard	standard	€ 1.360,00	€ 1.360,00	€ 220,00	€ 220,00
RC 55	standard	standard	€ 1.360,00	€ 1.360,00	€ 220,00	€ 220,00

PACKING

	Price
Wrapping film + wooden pallet	included
Wooden cage	€ 360,00
Wooden crate	€ 600,00

TECHNICAL DATA

	RC 40	RC 55
Drum dimensions	880 x 650 mm (Ø x P)	1080 x 603 mm (Ø x P)
Drum volume	400 lt	550 lt
High spin speed	452 r.p.m.	408 r.p.m.
G Factor	100	100
Water connections	2 x 3/4" Ø	2 x 1 1/2 Ø
Water drain	80 Ø mm	80 Ø mm
Machine dimensions: WxDxH	1098x1139x1433 mm	1430x1344x1870 mm
Net weight	519 Kg	1008 Kg
Packing dimensions : WxDxH	1300x1300x1880 mm	1540x1500x2020 mm
Gross weight	569 Kg	1076 Kg
Electric heating power	24 kW	30 kW
Steam consumption	1 kg	1,4 kg

RC -Capacity 70-85 Kg

**LOW SPIN,
HIGH PERFORMANCE**



HIGHLIGHTS



- IM11 Touch Screen 7" with new graphic layout
- Unlimited programming solutions
- Total control of machine by wi-fi on the IM11
- Delay start available
- Programmable water, temperature, engine speed and rotation/break rate levels for total customization of washing cycles
- AISI 304 stainless steel casing and drum
- AISI 304 stainless steel spider
- New mechanical door closing system
- Balanced hot/cold water fill for energy saving
- End-of-cycle audible warning device
- USB port
- Need of fixing to the ground - subframe included -

Models	Capacity		Heating	Standard Voltage 50/60 Hz	Price	
	1:9	1:10				
RC 70	78	70	Hot Water	3ph 400V + N	€	25.700,00
RC 70	78	70	Electric	3ph 400V + N	€	25.800,00
RC 70	78	70	Direct Steam	3ph 400V + N	€	26.300,00
RC 70	78	70	Electric+Steam	3ph 400V + N	€	26.800,00
RC 70	78	70	Indirect Steam	3ph 400V + N	€	26.980,00
RC 85	94	85	Hot Water	3ph 400V + N	€	28.200,00
RC 85	94	85	Electric	3ph 400V + N	€	28.300,00
RC 85	94	85	Direct Steam	3ph 400V + N	€	28.800,00
RC 85	94	85	Electric+Steam	3ph 400V + N	€	29.300,00
RC 85	94	85	Indirect Steam	3ph 400V + N	€	29.640,00

ACCESSORIES

Code	Description	Price	
	1pc 30lt/h pump including flush + lance + tank end signal	€	480,00
	2pc 30lt/h pump including flush + lance + tank end signal	€	720,00
	3pc 30lt/h pump including flush + lance + tank end signal	€	990,00
	4pc 30lt/h pump including flush + lance + tank end signal	€	1.100,00
	5pc 30lt/h pump including flush + lance + tank end signal	€	1.200,00
	6pc 30lt/h pump including flush + lance + tank end signal	€	1.300,00
	water loading pipes in metal sheath	€	180,00

OPTIONAL

Code	Description	Price
AI	predisposition for 11 peristaltic pumps for liquid detergent + flush	€ 260,00
CY	hard water inlet valve	€ 400,00
DP	second drain valve - for recovery circuit -	on request

VOLTAGE ON REQUEST

	3ph 400/415V+N 50/60Hz		3ph 230V 50/60Hz		3ph 400/440V 50/60Hz	
	electric	steam hot water	electric	steam hot water	electric	steam hot water
RC 70	standard	standard	special	special	€ 220,00	€ 220,00
RC 85	standard	standard	special	special	€ 220,00	€ 220,00

PACKING

	Price
Wrapping film + wooden pallet	included
Wooden cage	€ 360,00
Wooden crate	€ 600,00

TECHNICAL DATA

	RC 70	RC 85
Drum dimensions	1200 x 618 mm (Ø x P)	1200 x 750 mm (Ø x P)
Drum volume	700 lt	850 lt
High spin speed	360 r.p.m.	360 r.p.m.
G Factor	86	86
Water connections	2 x 1" 1/2 Ø	2 x 1"1/2 Ø
Water drain	80 Ø mm	80 Ø mm
Machine dimensions: WxDxH	1560x1395x1870 mm	1560x1525x1870 mm
Net weight	1052 Kg	1276 Kg
Packing dimensions : WxDxH	1700x1540x2020 mm	1700x1650x2020 mm
Gross weight	1150 Kg	1276 Kg
Electric heating power	30 kW	30 kW
Steam consumption	1,8 kg	2,2 kg

ES -Capacity 10-14-18 Kg

THE ALLIES OF FABRICS



HIGHLIGHTS



- IM10 - Computer Touch Screen
- Unlimited programming solutions
- Drying parameters editable during the cycle
- Drum rotation inversion
- Stainless Steel Aisi 304 drum without sharp edges for better conservation of linen.
- Door with double glass for perfect heat insulation and energy saving
- Emergency stop
- Safe and reliable closing system with double covered magnet
- Multi-step heating function: allows optimal temperature management during each cycle ensuring greater sensitivity in the treatment of garments
- Smart control of air movement in the drum for perfect drying and low consumption
- Cycles with automatic humidity control
- Cooldown as standard and anti-crease function for perfect and easy ironing
- Tear-proof filter with high filtering power, easy to remove for greater efficiency
- Display signalling for the essential cleaning of the filter
- USB port

Models	Capacity		Heating	Standard Voltage 50/60 Hz	Price	
	1:18	1:20			€	
ES 10	11	10	Gas	3ph 400V + N	€	5.100,00
ES 10	11	10	Electric	3ph 400V + N	€	4.980,00
ES 10	11	10	Steam	3ph 400V + N	€	5.980,00
ES 14	15	14	Gas	3ph 400V + N	€	5.760,00
● ES 14	15	14	Electric	3ph 400V + N	€	5.580,00
ES 14	15	14	Steam	3ph 400V + N	€	6.300,00
● ES 18	20	18	Gas	3ph 400V + N	€	5.990,00
● ES 18	20	18	Electric	3ph 400V + N	€	5.890,00
ES 18	20	18	Steam	3ph 400V + N	€	6.380,00

ACCESSORIES

Code	Description	Price
	lint filter in stainless steel Inox AISI 304	€ 180,00
	steam exchanger filter in stainless steel AISI 304	€ 180,00

OPTIONAL

Code	Description	Price
BQ	DSC: drum speed control	€ 300,00
BR	FSC: fan speed control (not available on GAS model)	€ 300,00
BV	functioning at partial or full power (for electric ES models ONLY)	€ 300,00
BB	left-hand door opening	€ 120,00
DB	3 front panels in stainless steel AISI 304	€ 400,00
DC	central front panel in stainless steel AISI 304	€ 220,00
ES	Inox steam battery	€ 1.440,00

Code	Description	Price
	FOR SELF-SERVICE USE:	
AM	mechanical coin box	€ 460,00
AL	electronical coin box	€ 640,00
EASYWASHCASH	Centralized cash desk with 12 selections -Wall fixing- Electronic coin box with recognition of 5 different coin denominations, banknote reader, prepaid Card reader, management of the rest, coin hopper with self-charging system, reporting service at the end of the day on SD Card, CD for accounting and statistical management of the laundry. Complete with 20 cards.	€ 6.800,00
FLGINC EWC	flange for wall recessing mounting	€ 460,00
9998SCHEDBI3	connection interface between machine and the centralized cash desk -1 card every 3 machines-	€ 360,00
ERSHED EWC	card distributor	€ 1.100,00
2950CARDCHIP	electronic card with chip	€ 2,00

VOLTAGE ON REQUEST

	3ph 400/415V+N 50/60Hz		3ph 230V 50/60Hz		1ph 230V 50/60Hz		3ph 400/440V 50/60Hz		3ph 115V 50/60Hz	
	electric	steam gas	electric	steam gas	electric	steam gas	electric	steam gas	electric	steam gas
ES 10	standard	standard	€ 200,00	€ 50,00	€ 600,00	€ 600,00	€ 200,00	€ 200,00	special	special
ES 14	standard	standard	€ 200,00	€ 50,00	€ 600,00	€ 600,00	€ 200,00	€ 200,00	special	special
ES 18	standard	standard	€ 200,00	€ 50,00	€ 600,00	€ 600,00	€ 200,00	€ 200,00	special	special

PACKING

	Price
Wrapping film + wooden pallet	included
Wooden cage	€ 220,00
Wooden crate	€ 360,00

TECHNICAL DATA

	ES 10	ES 14	ES 18
Drum dimensions	756 x 420 mm (Ø x P)	756 x 585 mm (Ø x P)	756 x 767 mm (Ø x P)
Drum volume	189 lt.	263 lt.	345 lt.
Drum speed	38 r.p.m.	38 r.p.m.	38 r.p.m.
Exhaust flow	1200 m ³ /h	1200 m ³ /h	1200 m ³ /h
Exhaust diameter	150 Ø mm	150 Ø mm	150 Ø mm
Machine dimensions: WxDxH	791x707x1804 mm	791x874x1804 mm	791x1051x1804 mm
Net weight electric/gas/steam	203 / 201 / 207 Kg	217 / 215 / 221 Kg	233 / 230 / 234 Kg
Packing dimensions : WxDxH	840x740x1926 mm	840x890x1926 mm	840x1070x1926 mm
Gross weight electric/gas/steam	210 / 208 / 214 Kg	225 / 223 / 229 Kg	245 / 242 / 246 Kg
Electric heating power	18 kW	18 kW	24 kW
Steam heating consumption	26 Kg	36 Kg	46 Kg
Gas power	29,4 kW	29,4 kW	29,4 kW

ES -Capacity 23-34 Kg

THE ALLIES OF FABRICS



HIGHLIGHTS



- IM10 - Computer Touch Screen
- Unlimited programming solutions
- Drying parameters editable during the cycle
- Drum rotation inversion
- Stainless Steel Aisi 304 drum without sharp edges for better conservation of linen.
- Door with double glass for perfect heat insulation and energy savings
- Emergency stop
- Safe and reliable closing system with double covered magnet
- Multi-step heating function: allows optimal temperature management during each cycle ensuring greater sensitivity in the treatment of garments.
- Smart control of air movement in the drum for perfect drying and low consumption
- Cycles with automatic humidity control
- Cooldown as standard and anti-crease function for perfect and easy ironing
- Tear-proof filter with high filtering power, easy to remove for greater efficiency
- Display signalling for the essential cleaning of the filter
- USB port

Models	Capacity		Heating	Standard Voltage 50/60 Hz	Price
	1:18	1:20			
ES 23	25	23	Gas	3ph 400V + N	€ 7.120,00
● ES 23	25	23	Electric	3ph 400V + N	€ 6.900,00
ES 23	25	23	Steam	3ph 400V + N	€ 7.200,00
ES 34	37	34	Gas	3ph 400V + N	€ 7.400,00
ES 34	37	34	Electric	3ph 400V + N	€ 7.290,00
ES 34	37	34	Steam	3ph 400V + N	€ 8.100,00

ACCESSORIES

Code	Description	Price
	lint filter in stainless steel Inox AISI 304	€ 180,00
	steam exchanger filter in stainless steel AISI 304	€ 180,00

OPTIONAL

Code	Description	Price
BQ	DSC: drum speed control	€ 300,00
BR	FSC: fan speed control (not available on GAS model)	€ 300,00
BV	functioning at partial or full power (for electric ES models ONLY)	€ 300,00
BB	left-hand door opening	€ 120,00
DB	3 front panels in stainless steel AISI 304	€ 400,00
DC	central front panel in stainless steel AISI 304	€ 220,00
ES	Inox steam battery	€ 1.440,00

VOLTAGE ON REQUEST

	3ph 400/415V+N 50/60Hz		3ph 230V 50/60Hz		1ph 230V 50/60Hz		3ph 400/440V 50/60Hz		3ph 115V 50/60Hz	
	electric	steam gas	electric	steam gas	electric	steam gas	electric	steam gas	electric	steam gas
ES 23	standard	standard	€ 200,00	€ 60,00	€ 600,00	€ 600,00	€ 200,00	€ 200,00	special	special
ES 34	standard	standard	€ 200,00	€ 60,00	€ 600,00	€ 600,00	€ 200,00	€ 200,00	special	special

PACKING

	Price
Wrapping film + wooden pallet	included
Wooden cage	€ 220,00
Wooden crate	€ 360,00

TECHNICAL DATA

	ES 23	ES 34
Drum dimensions	977 x 590 mm (Ø x P)	977 x 870 mm (Ø x P)
Drum volume	443 lt.	653 lt.
Drum speed	44 r.p.m.	44 r.p.m.
Exhaust flow	1680 m ³ /h	1680 m ³ /h
Exhaust diameter	200 Ø mm	200 Ø mm
Machine dimensions: WxDxH	1022x918x1932 mm	1022x1188x1932 mm
Net weight electric/gas/steam	286 / 287 / 290 Kg	323 / 321 / 323 Kg
Packing dimensions : WxDxH	1060x950x1974 mm	1060x1220x1974 mm
Gross weight electric/gas/steam	298 / 300 / 303 Kg	341 / 339 / 341 Kg
Electric heating power	24 kW	36 kW
Steam heating consumption	49 Kg	73 Kg
Gas power	37,8 kW	50,4 kW

ES -Capacity 55-75 Kg

FOR INDUSTRIAL NEEDS



HIGHLIGHTS



- IM10 - Computer Touch Screen
- Unlimited programming solutions
- Drying parameters editable during the cycle
- Drum rotation inversion
- Stainless Steel Aisi 304 drum without sharp edges for better conservation of linen
- Speed laps, rotation time and break adjustable and editable during the cycle
- Uniform temperature and hot air flow throughout the drum for even drying
- Multi-step heating function: allows optimal temperature management during each cycle ensuring greater sensitivity in the treatment of garments
- Cooldown as standard and anti-crease function for perfect and easy ironing
- Control of moisture and air flow for improved dryer efficiency
- Cycles with automatic humidity control
- Power Control function: the dryer can be heated at various power levels. The operator can program different power levels during the same cycle
- Large door with double glass for perfect heat insulation and energy savings - 180° opening
- Drying chamber insulated thermally and acoustically with rock-wool to avoid heat loss to the outside, exploit the hot air and reduce consumption
- Display signalling for the essential cleaning of the filter
- Tilting system for laundry loading and unloading operation on request
- USB port

* the STEAM version requires compressed air

* the TILTING version requires compressed air

Models	Capacity		Tilting	Heating	Standard Voltage 50/60 Hz	Price	
	1:18	1:20				€	€
ES 55	60	55	No	Gas	3ph 400V + N	€	16.000,00
ES 55	60	55	No	Electric	3ph 400V + N	€	16.000,00
ES 55	60	55	No	Steam	3ph 400V + N	€	16.500,00
ES 55 Tilting 1	60	55	Forward	Gas	3ph 400V + N	€	22.500,00
ES 55 Tilting 1	60	55	Forward	Electric	3ph 400V + N	€	22.500,00
ES 55 Tilting 1	60	55	Forward	Steam	3ph 400V + N	€	23.000,00
ES 55 Tilting 2	60	55	Forward + Backward	Gas	3ph 400V + N	€	24.000,00
ES 55 Tilting 2	60	55	Forward + Backward	Electric	3ph 400V + N	€	24.000,00
ES 55 Tilting 2	60	55	Forward + Backward	Steam	3ph 400V + N	€	24.500,00
ES 75	80	75	No	Gas	3ph 400V + N	€	18.900,00
ES 75	80	75	No	Electric	3ph 400V + N	€	18.200,00
ES 75	80	75	No	Steam	3ph 400V + N	€	19.100,00
ES 75 Tilting 1	80	75	Forward	Gas	3ph 400V + N	€	25.400,00
ES 75 Tilting 1	80	75	Forward	Electric	3ph 400V + N	€	24.700,00
ES 75 Tilting 1	80	75	Forward	Steam	3ph 400V + N	€	25.600,00
ES 75 Tilting 2	80	75	Forward + Backward	Gas	3ph 400V + N	€	33.500,00
ES 75 Tilting 2	80	75	Forward + Backward	Electric	3ph 400V + N	€	33.500,00
ES 75 Tilting 2	80	75	Forward + Backward	Steam	3ph 400V + N	€	33.500,00

ACCESSORIES

Code	Description	Price
	lint filter in stainless steel Inox AISI 304	€ 220,00

OPTIONAL

Code	Description	Price
BR	FSC: fan speed control (not available on GAS model)	€ 300,00
BV	functioning at partial or full power (for electric ES models ONLY)	€ 300,00
DB	3 front panels in stainless steel AISI 304	on request
DC	central front panel in stainless steel AISI 304	on request
ES	Inox steam battery	€ 1.560,00

VOLTAGE ON REQUEST

	3ph 400/415V+N 50/60Hz		3ph 230V 50/60Hz		1ph 230V 50/60Hz		3ph 400/440V 50/60Hz		3ph 115V 50/60Hz	
	electric	steam gas	electric	steam gas	electric	steam gas	electric	steam gas	electric	steam gas
ES 55	standard	standard	special	€ 60,00	not available	€ 700,00	€ 200,00	€ 200,00	not available	special
ES 75	standard	standard	special	€ 60,00	not available	€ 700,00	€ 200,00	€ 200,00	not available	special

PACKING

	Price
Wrapping film + wooden pallet	included
Wooden cage	€ 360,00
Wooden crate	€ 660,00

TECHNICAL DATA

	ES 55	ES 55 T1	ES 55 T2	ES 75	ES 75 T1	ES 75 T2
Drum dimensions	1202x960 mm (ØxP)	1202x960 mm (ØxP)	1202x960 mm (ØxP)	1202x1310 mm (ØxP)	1202x1310 mm (ØxP)	1202x1310 mm (ØxP)
Drum volume	1086 lt.	1086 lt.	1086 lt.	1486 lt.	1486 lt.	1486 lt.
Drum speed	25 r.p.m.	25 r.p.m.	25 r.p.m.	25 r.p.m.	25 r.p.m.	25 r.p.m.
Exhaust flow	1980 m ³ /h	1980 m ³ /h	1980 m ³ /h	1980 m ³ /h	1980 m ³ /h	1980 m ³ /h
Exhaust diameter	300 Ø mm	300 Ø mm	300 Ø mm	300 Ø mm	300 Ø mm	300 Ø mm
Machine dimensions: WxDxH	1360x1700x2260mm	1360x1996x2516 mm	1360x1996x2516 mm	1360x1930x2260 mm	1360x1930x2260 mm	1360x1930x2260 mm
Net weight electr/gas/steam	813/827/806 Kg	959/973/952 Kg	963/977/956 Kg	957/971/972 Kg	1103 /1117/1116 Kg	1107/1121/1122 Kg
Packing dimensions : WxDxH	1540x1700x2422mm	1540x1700x2270mm	1540x1700x2270mm	1540x2050x2422 mm	1540x2050x2270 mm	1540x2050x2270 mm
Gross weight electr/gas/steam	882 / 896 / 875Kg	1028/1042/1021 Kg	1032/1046/1025 Kg	1021/1035/1036 Kg	1167/1181/1180 Kg	1171/1185/1186 Kg
Electric heating power	58,5 kW	58,5 kW	58,5kW	97,5 kW	97,5 kW	97,5 kW
Steam heating consumption	71 Kg	71 Kg	71 Kg	97 Kg	97 Kg	97 Kg
Gas power	105 kW	105 kW	105 kW	G20: 135 kW G25: 110 kW G30/31: 140 KW	G20: 135 kW G25: 110 kW G30/31: 140 KW	G20: 135 kW G25: 110 kW G30/31: 140 KW

ES Green -Capacity 10-14-18 Kg

HIGHLIGHTS



THE CONSCIOUS DRYING



- IM10 - Computer Touch Screen
- Unlimited programming solutions
- Drying parameters editable during the cycle
- Drum rotation inversion
- Stainless Steel Aisi 304 drum without sharp edges for better conservation of linen.
- Closed circuit system with heat pump
- Not require flue
- The energy consumption is LESS THAN 50% than the consumption of a traditional dryer
- Double filter on the airline for perfect cleaning of the filter
- Display signalling for the essential cleaning of the filter
- Door with double glass for perfect heat insulatiion and energy saving
- Regulation of the number of drum and extractor fan rotations
- Multi-step heating function: allows optimal temperature management during each cycle ensuring greater sensitivity in the treatment of garments
- USB port

Models	Capacity		Heating	Standard Voltage 50 Hz	Price	
	1:18	1:20			€	°°
ES 10 GREEN	11	10	Heat pump	3ph 400V + N	€	9.800,°°
ES 14 GREEN	15	14	Heat pump	3ph 400V + N	€	10.500,°°
ES 18 GREEN	20	18	Heat pump	3ph 400V + N	€	11.600,°°

OPTIONAL

Code	Description	Price
BB	left-hand door opening	€ 120,°°



Closed circuit system - NOT require flue

Small electrical powers for LOW ENERGY consumption

NO COMPLEX system and connections

VOLTAGE ON REQUEST

	3ph 400/415V+N 50 Hz	3ph 230V 50 Hz	1ph 230V 50 Hz	3ph 400/440V 50 Hz	3ph 115V 50 Hz
	heat pump	heat pump	heat pump	heat pump	heat pump
ES 10	standard	€ 300,00	€ 500,00	€ 200,00	special
ES 14	standard	€ 300,00	€ 500,00	€ 200,00	special
ES 18	standard	€ 300,00	€ 500,00	€ 200,00	special

PACKING

	Price
Wrapping film + wooden pallet	included
Wooden cage	€ 220,00
Wooden crate	€ 360,00

TECHNICAL DATA

	ES 10 Green	ES 14 Green	ES 18 Green
Drum dimensions	756 x 420 mm (Ø x P)	756 x 585 mm (Ø x P)	756 x 767 mm (Ø x P)
Drum volume	189 lt.	263 lt.	345 lt.
Drum speed	38 r.p.m. regolabile da inverter	38 r.p.m. regolabile da inverter	38 r.p.m. regolabile da inverter
Exhaust diameter	34 Ø mm	34 Ø mm	34 Ø mm
Machine dimensions: WxDxH	791x1111x1846 mm	791x1278x1846 mm	791x1445x1846 mm
New weight	317 Kg	337 Kg	352 Kg
Packing dimensions : WxDxH	840x1450x1980 mm	840x1450x1980 mm	840x1450x1980 mm
Gross weight	328 Kg	348 Kg	368 Kg
Standard power	6,85 kW	6,85 kW	6,85 kW

TDM -Capacity 11-18 Kg

HIGHLIGHTS

WASHING AND DRYING IN JUST ONE MACHINE



Washer and Tumble Dryer up to 18Kg capacity in less than 1sqm!



TUMBLE DRYER

- IM10 - Computer Touch Screen
- Stainless Steel Aisi 304 drum without sharp edges for better conservation of linen.
- Alternating drum rotation and speed control as standard
- Cycles with automatic humidity control
- Control of residual moisture in the garments for correct drying temperature
- Cooling function: cooling at the end of the cycle to prevent thermal shock of the fabrics
- Anti-crease function for easy ironing operation
- Display signalling for the essential cleaning of the filter
- Easy to remove filter for simple and fast maintenance
- Insulation system to prevent heat dispersion

WASHING MACHINE

- IM11 Touch Screen 7" with new graphic layout
- Total control of machine by wi-fi via the IM11
- Unlimited program solutions
- 3x30 lt/h dosing pump for automatic and precise detergent measuring
- Shock absorber system to assure machine stability, even with poorly distributed or incomplete loads
- Half load programs for water saving
- Removable bottom panel for easy access to drain valve
- Stainless steel spider

Mod. 18 Kg

- New painted counter-wall
- New gasket on the front of the washing machine
- New mechanical door closing system
- New conical port seal

Models	High Spin Washing Machine			Tumble Dryer			Standard Voltage 50/60Hz	Price
	Capacity 1:9	Capacity 1:10	Heating	Capacity 1:18	Capacity 1:20	Heating		
TDM 1111	12	11	Electric/HotWater	12	11	Electric	3ph 400V + N	€ 15.600,00
TDM 1111	12	11	Electric/HotWater	12	11	Gas	3ph 400V + N	€ 15.600,00
TDM 1111	12	11	Steam	12	11	Steam	1ph 230V	€ 16.980,00
TDM 1818	20	18	Electric/HotWater	20	18	Electric	3ph 400V + N	€ 19.800,00
TDM 1818	20	18	Electric/HotWater	20	18	Gas	3ph 400V + N	€ 19.800,00
TDM 1818	20	18	Steam	20	18	Steam	3ph 400V + N	€ 21.000,00

ACCESSORIES HIGH SPIN WASHING MACHINE

Code	Description	Price
	1x 30 lt/h pump including flush+lance+tank end signal (in addition to 3 standard pumps)	€ 480,00
	2x 30 lt/h pump including flush+lance+tank end signal (in addition to 3 standard pumps)	€ 720,00
	drain pump kit	€ 960,00
	water loading pipes in metal sheath	€ 80,00

OPTIONAL HIGH SPIN WASHING MACHINE

Code	Description	Price
CY	hard water inlet valve	€ 180,00
DP	second exhaust valve (for recovery circuit)	on request

OPTIONAL TUMBLE DRYER

Code	Description	Price
BV	functioning at partial or full power (for electric ES models ONLY)	€ 200,00
BB	left-hand door opening	€ 120,00
ER	Inox steam exchange filter	€ 180,00

OPTIONAL TDM

Code	Description	Price
	FOR SELF SERVICE USE:	
AM	mechanical coin box	€ 460,00
AL	electronical coin box	€ 640,00
EASY WASH CASH	Centralized cash desk with 12 selections -Wall fixing- Electronic coin box with recognition of 5 different coin denominations, banknote reader, prepaid Card reader, management of the rest, coin hopper with self-charging system, reporting service at the end of the day on SD Card, CD for accounting and statistical management of the laundry. Complete with 20 cards.	€ 6.800,00
FLGINC EWC	flange for wall recessing mounting	€ 460,00
9998SCHEDBI3	connection interface between machine and the centralized cash desk -1 card every 3 machines	€ 360,00
ERSHED EWC	card distributor	€ 1.100,00
2950CARDCHIP	electronic card with chip	€ 2,00

VOLTAGE ON REQUEST

		3ph 400/415V+N 50/60Hz				3ph 230V 50/60Hz				1ph 230V 50/60Hz	
Washer	electric	electric	HW/steam	HW/steam	electric	electric	HW/steam	HW/steam	Washer	electric	electric
Dryer	electric	steam/gas	electric	steam/gas	electric	steam/gas	electric	steam/gas	Dryer	electric	steam/gas
TDM 11/11	standard	standard	standard	1ph230Vstd	€ 100,00	€ 100,00	€ 100,00	1ph230Vstd	TDM 11/11	€ 200,00	€ 200,00
TDM 18/18	standard	standard	standard	standard	€ 400,00	€ 400,00	€ 400,00	€ 400,00	TDM 18/18	€ 300,00	€ 300,00
		3ph 400/440V 50/60Hz				3ph 115V 50/60Hz					
Washer	electric	electric	HW/steam	HW/steam	electric	electric	HW/steam	HW/steam	Washer	HW/steam	HW/steam
Dryer	electric	steam/gas	electric	steam/gas	electric	steam/gas	electric	steam/gas	Dryer	electric	steam/gas
TDM 11/11	€ 260,00	€ 260,00	€ 260,00	€ 260,00	not available	not available	not available	special	TDM 11/11	€ 200,00	€ 200,00
TDM 18/18	€ 160,00	€ 160,00	€ 160,00	€ 160,00	not available	not available	not available	not available	TDM 18/18	€ 300,00	€ 300,00

PACKING

	Price
Wrapping film + wooden pallet	included
Wooden cage	€ 240,00
Wooden crate	€ 360,00

TECHNICAL DATA

	TDM 1111	TDM 1818
Washer drum dimensions	535 x 470 mm (Ø x P)	700 x 470 mm (Ø x P)
Washer GFactor	300	350
Dryer drum dimensions	700 x 560 Ø x P mm	756 x 797 Ø x P mm
Machine dimensions: WxDxH	720x1003x1991 mm	880x1196x2159 mm
Net weight	397 Kg	630 Kg
Packing dimensions : WxDxH	760x1045x2111 mm	1000x1196x2280 mm
Gross weight	404 Kg	645 Kg
Electric power	23 kW	30 kW

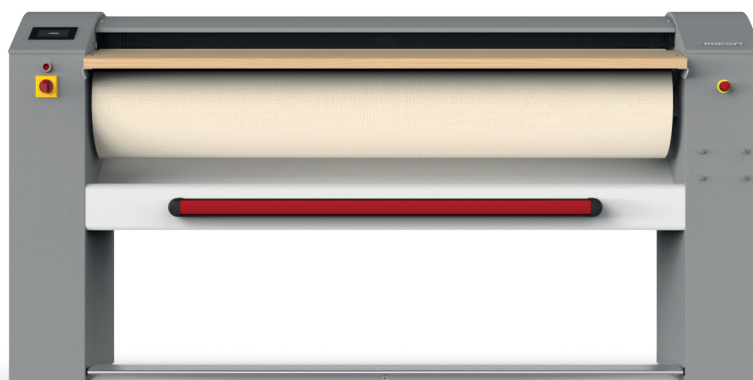
FI - Ø 250 - 330



THE ESSENTIAL OF FLAT IRONING

HIGHLIGHTS

- IM10 - Computer Touch Screen
- Unlimited program solutions
- Ironing parameters editable during the cycle
- Automatic regulation of ironing speed based on ironing temperature
- Cool Down system for energy saving
- Linear action for ironing pressure control
- Torsion bar to guarantee uniform pressure of the chest throughout the entire length of the roller
- Ironing speed electronically controlled by inverter
- Heating chest in chromed steel
- Adjustable introduction table position
- Nomex chest cover, resistant to high temperature
- Anti-panic bar in front of operator
- Start/stop ironing pedal



Models	Hourly Output kg/h	Ø Roller mm	Ironing Surface Length	Standard Voltage 50/60 Hz	Price
FI 1000/25 no vacuum	25	250	1000	3ph 400V + N	€ 4.990,00
FI 1000/25 with vacuum	25	250	1000	3ph 400V + N	€ 5.480,00
FI 1250/25 no vacuum	30	250	1250	3ph 400V + N	€ 5.580,00
FI 1250/25 with vacuum	30	250	1250	3ph 400V + N	€ 5.980,00
FI 1500/25 no vacuum	35	250	1500	3ph 400V + N	€ 5.980,00
● FI 1500/25 with vacuum	35	250	1500	3ph 400V + N	€ 6.490,00
FI 1500/33 with vacuum	40	330	1500	3ph 400V + N	€ 6.900,00
FI 1750/33 with vacuum	50	330	1750	3ph 400V + N	€ 7.500,00
● FI 2000/33 with vacuum	60	330	2000	3ph 400V + N	€ 8.000,00

OPTIONAL FLATWORK IRONER Ø 330

Code	Description	Price
	roller cover with metal mesh	on request

VOLTAGE ON REQUEST

	3ph 400/415V+N 50/60Hz	3ph 230V 50/60Hz	1ph 230V 50/60Hz	3ph 400/440V 50/60Hz	3ph 115V 50/60Hz
	electric	electric	electric	electric	electric
FI 1000/25	standard	€ 100,00	€ 160,00	€ 400,00	special
FI 1250/25	standard	€ 100,00	€ 160,00	€ 400,00	special
FI 1500/25	standard	€ 100,00	€ 160,00	€ 400,00	special
FI 1500/33	standard	€ 100,00	€ 160,00	€ 400,00	special
FI 1750/33	standard	€ 100,00	€ 160,00	€ 400,00	special
FI 2000/33	standard	€ 100,00	€ 160,00	€ 400,00	special

PACKING

Price

Wrapping film + wooden pallet
Wooden cage
Wooden crate

included
€ 160,00
€ 300,00

TECHNICAL DATA

	FI 1000/25	FI 1250/25	FI 1500/25	FI 1500/33	FI 1750/33	FI 2000/33
Ironing surface	1000 mm	1250 mm	1500 mm	1500 mm	1750mm	2000 mm
Ironing speed (adjustable)	1-6 mt/min	1-6 mt/min	1-6 mt/min	1-6 mt/min	1-6 mt/min	1-6 mt/min
Ironing pressure (adjustable)	214 - 322 Kg/m ²	214 - 322 Kg/m ²	214 - 322 Kg/m ²	214 - 322 Kg/m ²	214 - 322 Kg/m ²	214 - 322 Kg/m ²
Residual humidity	20 %	20 %	20 %	20 %	20 %	20 %
Ø humid air exhaust	73 (opt) Ømm	73 (opt) Ømm	73 (opt) Ømm	73 Ømm	73 Ømm	73 Ømm
Air exhaust flow	200 (opt) m ³ /h	200 (opt) m ³ /h	200 (opt) m ³ /h	200 m ³ /h	200 m ³ /h	200 m ³ /h
Machine dims.: WxDxH	1513x671x1087 mm	1763x671x1087 mm	2013x671x1087 mm	2013x671x1157 mm	2263x671x1157 mm	2513x671x1157 mm
Net weight	159 Kg	174 Kg	198 Kg	220 Kg	241 Kg	268 Kg
Packing dims.: WxDxH	1620x724x1203 mm	1870x724x1203 mm	2120x724x1203 mm	2100x724x1273 mm	2350x724x1273 mm	2600x724x1273 mm
Gross weight	176 Kg	192 Kg	218 Kg	240 Kg	261 Kg	289 Kg
Total power	4,9 kW	5,8 kW	8,1 kW	8,1 kW	11,1 kW	14,1 kW



PRESSURE CONTROL
- Patented Technology -
TV2008A000116

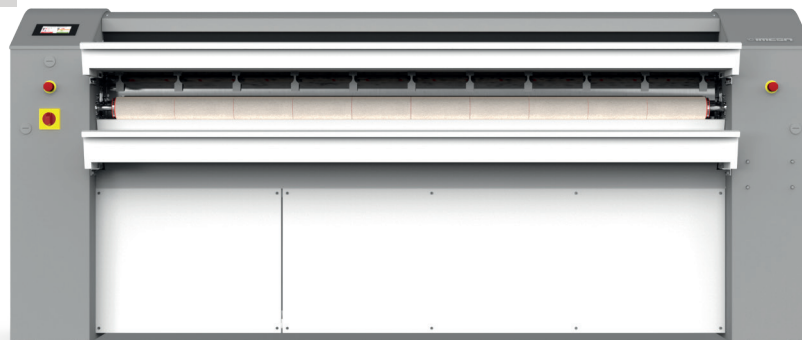
MCA - Ø 330



PRODUCTIVITY IN A SMALL PLACE

HIGHLIGHTS

- IM10 - Computer Touch Screen
- Unlimited program solutions
- Ironing parameters editable during the cycle
- Electronic ironing speed regulation by invert according to speed and temperature
- Cool Down system for energy saving
- Chest in chromed steel
- Nomex ironing belts resistant to high temperature
- Filters on the air inlet for an efficient suction system
- Hand safety bar
- Two emergency stops



Models	Hourly Output kg/h	Ø Roller mm	Ironing Surface Length	Heating	Standard Voltage 50/60 Hz	Price
MCA 150	35	330	1504	Electric	3ph 400V+N	€ 13.800,00
MCA 150	35	330	1504	Gas	3ph 400V+N	€ 14.600,00
MCA 180	40	330	1880	Electric	3ph 400V+N	€ 14.800,00
MCA 180	40	330	1880	Gas	3ph 400V+N	€ 15.800,00
MCA 210	50	330	2068	Electric	3ph 400V+N	€ 15.500,00
MCA 210	50	330	2068	Gas	3ph 400V+N	€ 16.400,00

OPTIONAL

Code	Description	Price
CU	pedal for reversing roller rotation	€ 480,00

VOLTAGE ON REQUEST

	3ph 400/415V+N 50/60Hz		3ph 230V 50/60Hz		1ph 230V 50/60Hz		3ph 400/440V 50/60Hz		3ph 115V 50/60Hz	
	electric	gas	electric	gas	electric	gas	electric	gas	electric	gas
MCA 1500	standard	standard	€ 200,00	€ 200,00	special	not available	€ 400,00	€ 400,00	not available	not available
MCA 1800	standard	standard	€ 200,00	€ 200,00	special	not available	€ 400,00	€ 400,00	not available	not available
MCA 2100	standard	standard	€ 200,00	€ 200,00	special	not available	€ 400,00	€ 400,00	not available	not available

PACKING

	Price
Wrapping film + wooden pallet	included
Wooden cage	€ 240,00
Wooden crate	€ 400,00

TECHNICAL DATA

	MCA 150	MCA 180	MCA 210
Ironing surface	1504 mm	1880 mm	2068 mm
Ironing speed (adjustable)	1-6 mt/min	1-6 mt/min	1-6 mt/min
Residual humidity to iron	50 %	50 %	50 %
Humidity air exhaust	100 Ømm	100 Ømm	100 Ømm
Exhaust flow	100 Ømm	100 Ømm	100 Ømm
Suction capacity	350 m ³ /h	350 m ³ /h	350 m ³ /h
Machine dimensions: WxDxH	2134 x 598 x 1092 mm	2514 x 598 x 1092 mm	2704 x 598 x 1092 mm
Net weight (electric/gas)	382 / 412 Kg	431 / 449 Kg	505 / 451 Kg
Packing dimensions: WxDxH	2230 x 710 x 1270 mm	2610 x 710 x 1270 mm	2800 x 710 x 1270 mm
Gross weight (electric/gas)	420 / 450 Kg	478 / 496 Kg	556 / 502 Kg
Electric heating power	20,7 kW	25,2 kW	28,8 kW
Gas power	22 kW	24,6 kW	26 kW

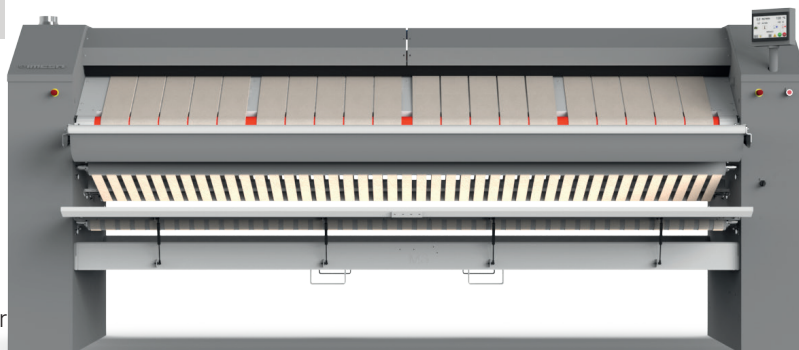
MCM - Ø 500

QUALITY IRONING AND PRODUCTIVITY



HIGHLIGHTS

- IM10 - Computer Touch Screen
- Unlimited program solutions
- Drying parameters editable during cycle
- PLC control with 128 ironing programs on model equipped with longitudinal fold and automatic feeder
- Automatic speed/temperature compensation
- Cool Down system for energy saving
- Hand safety bar
- Two emergency stop
- NOMEX ironing belts resistant to very high temperature
- The linen remains in contact with the roller for 82% of its circumference perimeter



Models	Hourly Output kg/h	Ø Roller mm	Ironing Surface Length	Heating	Standard Voltage 50/60 Hz	Price
MCM 2500	62	502	2508	Electric	3ph 400V+N	€ 36.200,00
MCM 2500	62	502	2508	Gas	3ph 400V+N	€ 36.200,00
MCM 2500	62	502	2508	Steam	3ph 400V+N	€ 36.800,00
MCM 2800	68	502	2717	Electric	3ph 400V+N	€ 37.200,00
MCM 2800	68	502	2717	Gas	3ph 400V+N	€ 37.400,00
MCM 2800	68	502	2717	Steam	3ph 400V+N	€ 39.200,00
MCM 3200	80	502	3135	Electric	3ph 400V+N	€ 38.400,00
MCM 3200	80	502	3135	Gas	3ph 400V+N	€ 38.900,00
MCM 3200	80	502	3135	Steam	3ph 400V+N	€ 39.400,00

OPTIONAL

Code	Description	Price
DY	motorised linen exit on both sides, front and rear	€ 6.860,00
EA*	longitudinal fold + motorised linen exit on both sides front and rear - <i>contact IMESA for more details in case of order</i>	€ 21.880,00
EB*	automatic feeder, vacuum table, primary + longitudinal fold + linen exit on both sides front and rear - <i>contact IMESA for more details in case of order</i>	€ 29.980,00
CU	roller reversing pedal system	€ 480,00

* The EA and EB optionals need compressed air connection

VOLTAGE ON REQUEST

	3ph 400/415V+N 50/60Hz electric		3ph 230V 50/60Hz			1ph 230V 50/60Hz			3ph 400/440V 50/60Hz			3ph 115V 50/60Hz	
	standard	steam and gas	electric	steam	gas	electric	steam	gas	electric	steam	gas	electric	steam
MCM 2500	standard	€ 200,00	€ 200,00	€ 200,00	not available	special	€ 200,00	€ 200,00	€ 200,00	not available	special	not available	special
MCM 2800	standard	€ 200,00	€ 200,00	€ 200,00	not available	special	€ 200,00	€ 200,00	€ 200,00	not available	special	not available	special
MCM 3200	standard	€ 200,00	€ 200,00	€ 200,00	not available	special	€ 200,00	€ 200,00	€ 200,00	not available	special	not available	special

PACKING

Price

Wrapping film + wooden pallet		included
Wooden cage	€	600,00
Wooden crate	€	900,00

TECHNICAL DATA

	MCM 2500	MCM 2800	MCM 3200
Ironing surface	2508 mm	2717 mm	3135 mm
Adjustable speed	1-9 mt./min.	1-9 mt./min.	1-9 mt./min.
Residual humidity to iron	50%	50%	50%
Humid air exhaust	100 Ø mm	100 Ø mm	100 Ø mm
Bum gas exhaust (gas heated machine)	100 Ø mm	100 Ø mm	100 Ø mm
Basic machine and with motorised EXIT dimensions: WxDxH	3400x1304x1678 mm	3610x1304x1678 mm	4027x1304x1678 mm
Machine dimensions with EXIT, FOLD and FEEDER: WxDxH	3400x1583x1678 mm	3610x1583x1678 mm	4027x1583x1678 mm
Net weight basic machine and with motorised EXIT	1163 Kg	1268 Kg	1373 Kg
Net weight with EXIT, FOLD and FEEDER	1313 Kg	1418 Kg	1523 Kg
Packing dimensions basic machine or with motorised EXIT: WxDxH	3413x1100x1868 mm	3622x1100x1868 mm	4040x1100x1868 mm
Packing dimensions machine with EXIT, FOLD and FEEDER: WxDxH	3413x1100x1868 mm	3622x1100x1868 mm	4040x1100x1868 mm
Gross weight basic machine and with motorised EXIT	1263 Kg	1378 Kg	1493 Kg
Gross weight with EXIT and FOLD	1413 Kg	1528 Kg	1643 Kg
Electric power basic machine	49,3 kW	52,9 kW	61,9 kW
Steam power basic machine	0,7 kW	0,7 kW	0,7 kW
Gas power basic machine	0,9 kW	0,9 kW	0,9 kW
Electric power machine with EXIT	49,5 kW	52,9 kW	61,9 kW
Steam power machine with EXIT	0,9 kW	0,9 kW	0,9 kW
Gas power machine with EXIT	1,1 kW	1,1 kW	1,1 kW
Electric power machine with EXIT, FOLD and FEEDER	49,5 kW	53,1 kW	62,1 kW
Steam power machine with EXIT, FOLD and FEEDER	0,9 kW	0,9 kW	0,9 kW
Gas power machine with EXIT, FOLD and FEEDER	1,1 kW	1,1 kW	1,1 kW
Steam consumption	100 Kg/h	110 Kg/h	125 Kg/h
Air compressed consumption (with EA or EB)	500lt/h	500lt/h	500lt/h
Air compressed pressure (with EA or EB)	6 bar	6 bar	6 bar

SELF SERVICE

Imesa offers the service of consulting and budgeting of a self-service store.



HIGH SPIN WASHING MACHINES

The LM series is a guarantee of effectiveness and ease of use, for a professional washing for everyone.

INTERACTIVE: extremely easy to use.

STURDY: designed to work thousands of hours at maximum performance.

Models: see the dedicated washers section to identify the models suitable for your laundry



TUMBLE DRYERS

The ES series is synonymous with reliable drying at low consumption.

EFFECTIVE: professional drying for all types of garment

STURDY: designed to work thousands of hours at minimum maintenance.

Models: see the dedicated dryers section to identify the Models suitable for your laundry



TANDEM: Let's optimize the space! STACKABLE WASHING MACHINES AND TUMBLE DRYERS

The self-service laundries by IMESA, in addition to the traditional washing and drying lines, exploit the technology of TANDEM.

Available in capacities 11 and 18 Kg are the ideal solution for small and medium sized stores :
LESS SPACE + SERVICE.

Models: see the dedicated section to identify the Models suitable for your laundry at page 58.

BASES AND PROFILE

IMESA manufactures and supplies custom-made bases and profiles on which all connections for cold water, hot water, electricity, waste water and data communication cables are prepared.

HYDRAULIC SYSTEM

IMESA can size and supply the hydraulic water and waste water discharge system complete and ready to be mounted on the back of the stands.

PAYMENT SYSTEMS

IMESA provides self-service shops with coin box (mechanical or electronic coin acceptor) or centralized (centralized cash box) for a total FLEXIBILITY in the management of the store.

Also available the most current Contactless devices to manage payments with Debit Cards, Credit Cards, Prepaid Cards and NFC mobile applications

THE COST OF A PROGRAM IS UP TO YOU!

It's possible to set the cost of washing and drying programs, differentiating the price, for example, according to the time, the type of cycle, the temperature or the time of drying.

Laundry For You

IMESA App dedicated to the dealer and laundry manager that allows to monitor and manage the operativity of machines and to access the dedicated portal for the creation of personalized news and promotions.

The App today consists of three main environments:

- News & Community environment to upload promotions and share news and useful tips on washing and drying.
- Statistical environment dedicated to the operating performance of washing machines, to consult consumption, washing cycles and other operating parameters.
- Technical information to view the main technical information related to the washing machine.

In continuous development, LaundryForYou is continuously enriched with new features dedicated to the operator and the final user.

FURNISHING COMPLEMENTS

The shop can be completed with furnishing accessories such as table, chairs and vending machine.

TROLLEY

Laundry trolleys are also available for laundry handling.

Everything listed in this SELF-SERVICE section is subject to a specific price list. Our Sales Department is available for customized consulting, design and quotation.

PROJECTS

Three different store formats



SOLUTION 1

- nr. 02 Tandem 11Kg mod. TDM 11/11
- nr. 02 Tandem 18Kg mod. TDM 18/18

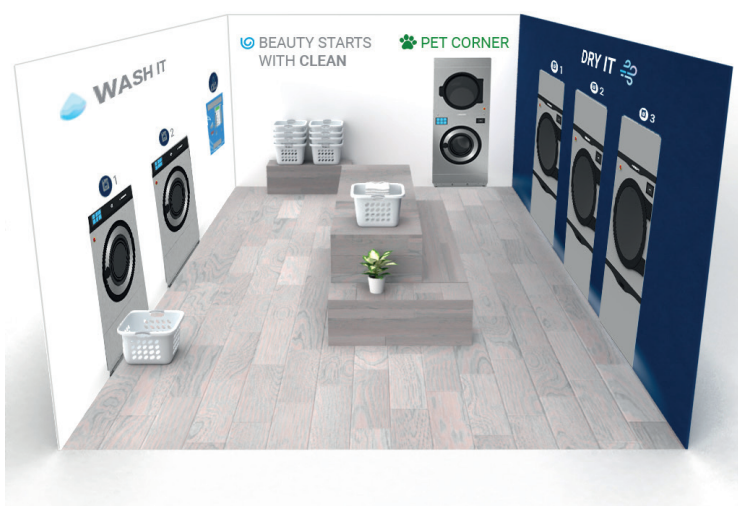
SOLUTION 2

- nr. 02 High Spin washing machines 11Kg mod. LM 11
- nr. 02 High Spin washing machines 18Kg mod. LM 18
- nr. 03 Tumble Dryers 18 Kg mod. ES 18
- nr. 01 Tandem 11Kg mod. TDM 11/11

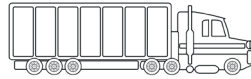


SOLUTION 3

- nr. 01 High spin washing machine 11Kg mod. LM 11
- nr. 01 High spin washing machine 18Kg mod. LM 11
- nr. 01 Tandem 11Kg mod. TDM 11/11
- nr. 03 Tumble dryers 18Kg mod. ES 18

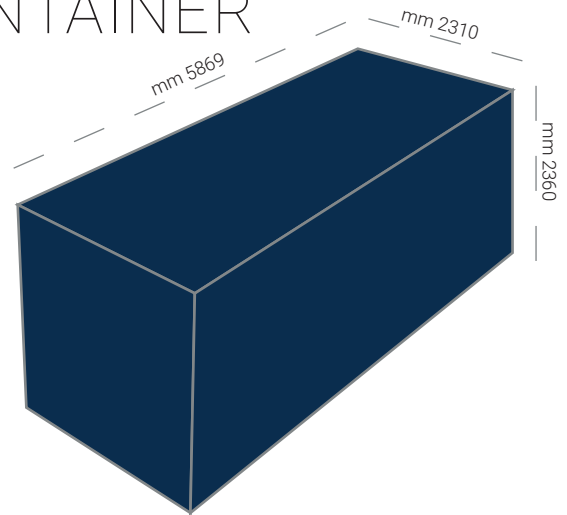


LOADING PLAN 20' BOX CONTAINER



CONTAINER 20' BOX

dimensions mm 5860 x 2310 x 2360

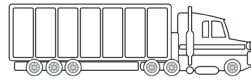


Models	Dimensions - mm -			Pcs/container
	W	D	H	
LM 65	640	660	925	54 stackable machines
LM 80	640	780	920	54 stackable machines
ES 65	640	660	925	54 stackable machines
ES 80	640	810	920	50 stackable machines
ES 10	840	740	1880	21
ES 10 GREEN	840	1450	1980	11
LM 8	760	940	1200	18 or 36 stackable machines
TDM 11/11	760	1040	2100	16
LM 11	760	1040	1200	16 or 32 stackable machines
RC 11	760	1040	2100	
ES 14	840	890	1880	14
ES 18	840	1070	1880	
ES 14 GREEN	840	1450	1980	11
ES 18 GREEN	840	1450	1980	
LM 14	920	1150	1400	12
LM 18	920	1150	1400	
LM 23	920	1150	1400	
RC 18	920	1150	1430	
RC 23	920	1150	1430	
ES 23	1060	950	1970	
TDM 18/18	920	1150	2280	
FI 1000/25	1610	670	1980	
LM 26	1120	1130	1560	10
LM 32	1120	1130	1560	
RC 30	1150	1150	1750	
D2W 18	1150	1100	1690	
D2W 23	1150	1100	1690	
ES 34	1060	1220	1970	
FI 1250/25	1870	670	1220	

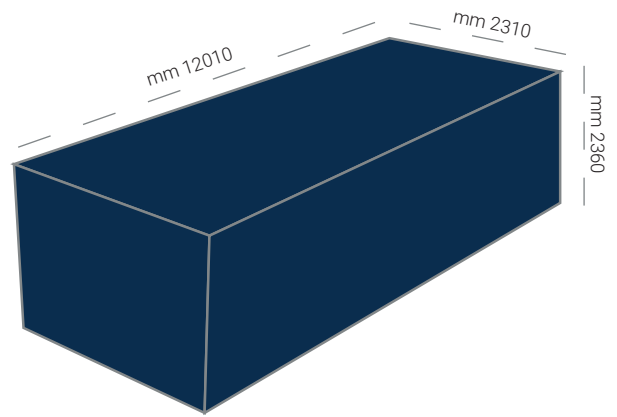
Models	Dimensions - mm -			Pcs/container
	W	D	H	
FI 1500/25	2110	670	1220	8
FI 1500/33	2110	670	1220	
MCA 150/33	2230	730	1270	
FI 1750/33	2360	670	1270	6
FI 2000/33	2600	670	1270	
MCA 180/33	2610	730	1270	
MCA 210/33	2800	730	1270	
RC 40	1300	1300	1880	4
D2W 30	1350	1373	2100	
LM 40	1700	1540	1910	3
LM 55	1700	1540	1910	
LM 70	1750	1560	2200	
LM 85	1700	1650	2200	
LM 100	1740	1740	2210	
LM 100 Tilting	1930	1800	2320	
LM 125	1740	1925	2260	
LM 125 Tilting	1930	1800	2320	
RC 55	1500	1540	2020	
RC 70	1700	1540	2020	
RC 85	1700	1650	2020	
D2W 55	1660	1700	2120	
ES 55*	1540	1700	2270	
ES 55 Tilting*	1540	1700	2270	
ES 75*	1540	2050	2270	
ES 75 Tilting*	1540	2050	2270	
MCM 2500	3240	1100	1870	2
MCM 2800	3630	1100	1870	
MCM 3200	4040	1100	1870	
MCM 2500 + feeder	3420	1300	1870	1
MCM 2800 + feeder	3630	1300	1870	
MCM 3200 + feeder	4040	1300	1870	

* without pallet

LOADING PLAN 40' BOX CONTAINER



CONTAINER 40' BOX
dimensions mm 12010 x 2310 x 2360



Models	Dimensions - mm -			Pcs/container
	W	D	H	
LM 65	640	660	925	108 stackable machines
LM 80	640	780	920	108 stackable machines
ES 65	640	660	925	108 stackable machines
ES 80	640	810	920	104 stackable machines
ES 10	840	740	1880	44
ES 10 GREEN	840	1450	1980	22
LM 8	760	940	1200	37 or 74 stackable machine
LM 11	760	1040	1200	34 or 68 stackable machine
RC 11	760	1040	1200	
TDM 11/11	760	1040	2100	34
ES 14	840	890	1880	28
ES 18	840	1070	1880	
ES 14 GREEN	840	1450	1980	22
ES 18 GREEN	840	1450	1980	
LM 14	920	1150	1400	
LM 18	920	1150	1400	
LM 23	920	1150	1400	
RC 18	920	1150	1430	26
RC 23	920	1150	1430	
TDM 18/18	920	1150	2280	
ES23	1060	950	1970	24
FI 1000/25	1610	670	1980	
ES 34	1060	1220	1970	21
LM 26	1120	1130	1560	
LM 32	1120	1130	1560	
RC 30	1150	1150	1750	20
D2W 18	1150	1100	1690	
D2W 23	1150	1100	1690	

Models	Dimensions - mm -			Pcs/container	
	W	D	H		
FI 1250/25	1870	670	1220	19	
FI 1500/25	2110	670	1220	17	
FI 1500/33	2110	670	1220		
FI 1750-2000/33	2360	670	1270	15	
MCA 150/33	2230	730	1270	16	
MCA 180/33	2610	730	1270	12	
MCA 210/33	2800	730	1270		
RC 40	1300	1300	1880	9	
D2W 30	1350	1373	2100	8	
RC 55	1500	1540	2020		
LM 40	1700	1540	1910	7	
LM 55	1700	1540	1910		
LM 70	1750	1560	2200		
LM 85	1700	1650	2200		
RC 70	1700	1540	2020		
RC 85	1700	1650	2020		
D2W 55	1700	1660	2120		
ES 55*	1540	1700	2270		
ES 55 Tilting*	1540	1700	2270		
ES 75*	1540	2050	2270		
ES 75 Tilting*	1540	2050	2270		
LM 100	1740	1740	2210		6
LM 100 Tilting	1930	1800	2320		
LM 125	1740	1925	2260		
LM 125 Tilting	1930	1800	2320		
MCM 2500	3420	1100	1870		
MCM 2800	3630	1100	1870		
MCM 3200	4040	1100	1870	4	
MCM 2500 + feeder	3420	1300	1870	3	
MCM 2800 + feeder	3630	1300	1870		
MCM 3200 + feeder	4040	1300	1870	2	

* without pallet

DRYCLEANING

Perc drycleaning machine



- Fridge unit with heat pump
- Main parts made of stainless steel
- DIALOG microprocessor control
- Double lint filters
- Still
- 1 ecological nylon filter

Models	Capacity	Heating	Tanks	Voltages 50/60 Hz	Price
IP-DC210E	10	Electric 14 kW	2 tanks	400V + N - 3ph	€ 38.300,00
IP-DC210E	10	Electric 14 kW	3 tanks	400V + N - 3ph	€ 41.700,00
IP-DC210V	10	Steam	2 tanks	400V + N - 3ph	€ 38.300,00
IP-DC210V	10	Steam	3 tanks	400V + N - 3ph	€ 41.700,00



- Fridge unit with heat pump
- Main parts made of stainless steel
- DIALOG microprocessor control
- Double air filter
- Still
- 1 ecological nylon filter
- I.T.D.S. air tunnel design
- Large loading door

Models	Capacity	Heating	Tanks	Voltages 50/60 Hz	Price
IP-DC215E	15	Electric 19,5 kW	2 tanks	400V + N - 3ph	€ 42.000,00
IP-DC215E	15	Electric 19,5 kW	3 tanks	400V + N - 3ph	€ 45.300,00
IP-DC215V	15	Steam	2 tanks	400V + N - 3ph	€ 42.000,00
IP-DC215V	15	Steam	3 tanks	400V + N - 3ph	€ 45.300,00

OPTIONALS

Description	Price
1 ecological nylon filter with 1 DECO filter	€ 930,00
2 ecological filters	€ 3.710,00
Automatic water save system (valve)	€ 460,00
Automatic drying control	€ 480,00
Detergent pump	€ 850,00
Exchanger for water detergent cooling	€ 740,00
Steam trap - for STEAM models -	€ 850,00
Compressor unit	€ 1.000,00

PACKING

Price

Carton/wrapping film on pallet
Wooden crate

€ included
1.300,00

TECHNICAL DATA

	IP-DC210	IP-DC215
Drum volume	200 lt	285 lt
Door diameter	350 mm	500 mm
Steam consumption (Kg/h)	40	40
Machine Dimensions: LxPxH mm	1604x1440x1955 mm	1714x1510x2125 mm
Net weight	900 Kg	1140 Kg
Packing Dimensions: LxPxH mm	1760x1580x2270 mm	1760x1580x2270 mm
Gross weight	990 Kg	1227 Kg

DRYCLEANING

Hydricarvib drycleaning machine



IH-DC210

IH-DC215

- Closed circuit drycleaning
- Fridge unit with heat pump
- Main parts made of stainless steel
- 2 self-cleaning solvent tanks
- Dialog microprocessor control
- Double lint filters
- No need for distillation
- Automatic water save system (valve)
- Automatic drying control
- Detergent pump

Models	Capacity	Heating	Tanks	Voltages 50/60 Hz	Price
IH-DC210E	10	Electric 14,5 kW	2 tanks	400V + N - 3ph	€ 47.600,00
IH-DC210V	10	Steam	2 tanks	400V + N - 3ph	€ 45.100,00
IH-DC215E	15	Electric 15 kW	2 tanks	400V + N - 3ph	€ 51.400,00
IH-DC215V	15	Steam	2 tanks	400V + N - 3ph	€ 49.100,00



- Fridge unit with heat pump
- Main parts made of stainless steel
- DIALOG PLUS microprocessor control
- Still
- 1 ecological nylon filter
- Automatic water save system (valve)
- Automatic drying control
- Detergent pump
- Exchanger for water solvent cooling

Models	Capacity	Heating	Tanks	Voltages 50/60 Hz	Price
IH-DC315E	15	Electric 17 kW	2 tanks	400V + N - 3ph	€ 61.700,00
IH-DC315E	15	Steam	3 tanks	400V + N - 3ph	€ 66.200,00
IH-DC315V	15	Electric 17 kW	2 tanks	400V + N - 3ph	€ 59.220,00
IH-DC315V	15	Steam	3 tanks	400V + N - 3ph	€ 63.700,00

OPTIONAL

Description	Price
1 ecological nylon filter with 1 DECO filter -for Models IH-DC315 only-	€ 930,00
2 ecological filters -for Models IH-DC315 only-	€ 3.710,00
Exchanger for water solvent cooling -for Models IHDC210 only-	€ 740,00
Steam trap - for Models IH-DC210V - IH-DC215V	€ 330,00
Steam trap - for Models IH-DC315V -	€ 850,00
Compressor unit	€ 1.000,00

PACKING

Price

Carton/wrapping film on pallet
Wooden crate

€ included
1.300,00

TECHNICAL DATA

	IP-DC210	IP-DC215
Drum volume	200 lt	285 lt
Door diameter	350 mm	500 mm
Steam consumption (Kg/h)	40	40
Machine Dimensions: LxPxH mm	1604x1440x1955 mm	1714x1510x2125 mm
Net weight	900 Kg	1140 Kg
Packing Dimensions: LxPxH mm	1760x1580x2270 mm	1760x1580x2270 mm
Gross weight	990 Kg	1227 Kg

IRONING EQUIPMENT

Vacuum ironing tables



- Suitable for: Hotel and Community, Drycleaning
- WITHOUT BOILER
- Ironing surface 120x40 cm
- Fixed table height at 92 cm
- Electrically heated surface
- Vacuum ironing surface
- Wide garments tray
- Arm and ironing sleeves attachment

**picture is indicative of the product. The "Lighting group with iron balancer" and the "Ironing sleeve arm" are accessories to be ordered separately as per list p. 74*

Model		Voltage	Price
ASSE/170B	Vacuum ironing table electrically heated with built-in vacuum unit. Without steam boiler. Complete with 1 steam iron and cable holder rod. Carton packing included.	230V 50Hz 1ph €	2.240,00



- Suitable for: Hotel and Community, Drycleaning
- With built-in 6 lt boiler
- Ironing surface 120x40 cm
- Fixed table height 92 cm
- Electrically heated surface
- Vacuum ironing surface
- Wide garments tray
- Automatic water inlet
- Arm and ironing sleeves attachment
- Electronic control console

**picture is indicative of the product. The "Lighting group with iron balancer" and the "Ironing sleeve arm" are accessories to be ordered separately as per list p. 74*

Model		Voltage	Price
ASSE/156B	Vacuum ironing table electrically heated with built-in 4kW boiler and vacuum unit. Complete with 1 steam iron and cable holder rod. Carton packing included.	400V 50Hz 3ph €	4.420,00



- Suitable for: Hotel and Community, Drycleaning
- Rectangular ironing surface 135x70cm
- Fixed table height at 90 cm
- Electrically heated surface
- Adjustable surface temperature
- Vacuum ironing surface
- Wide garments tray
- Automatic water inlet

Model		Voltage	Price
TAV/167	Rectangular vacuum ironing table electrically heated without steam boiler. With built-in vacuum unit. Complete with 1 steam iron and cable holder rod. Carton packing included	230V 50Hz 1ph €	2.920,00



- Suitable for: Hotel and Community, Drycleaning
- With 6 lt built-in boiler
- Rectangular ironing surface 125x80 cm
- Fixed table height at 90 cm
- Electrically heated ironing surface
- Vacuum ironing surface
- Wide garments tray
- Automatic water inlet
- Arm and ironing sleeves attachment
- Electronic control console
-

**picture is indicative of the product. The group "Ironing sleeve arm" is an accessory to be ordered separately as per list p. 74*

Model		Voltage	Price
TAV/164B	Rectangular vacuum ironing table electrically heated with 4kW built-in boiler and vacuum unit. Complete with 1 steam iron and cable holder rod. Carton packing included.	400V 50Hz 3ph €	5.460,00

Vacuum and blowing ironing tables



- Suitable for: Drycleaning
- Without built-in boiler
- Ironing surface 116x43x26 (point) cm
- Height adjustment from 84 to 108 cm
- Electrically heated ironing surface
- Vacuum and blowing ironing surface
- Two pedals for ironing on both right and left sides
- Arm attachment on both sides
- Wide garments tray

Model		Voltage	Price
ASSE/456	Vacuum and blowing ironing table, electrically heated without built-in boiler. With built-in vacuum unit. Complete with 1 steam iron and cable holder rod. Carton packing included.	230V 50Hz 1ph €	5.680,00



- Suitable for: Drycleaning
- With built-in boiler 8lt
- Ironing surface 116x43x26 (point) cm
- Fixed table height at 95 cm
- Electrically heating ironing surface
- Adjustable surface temperature
- Vacuum and blowing ironing surface
- Two pedals for ironing on both right and left sides
- Arm attachment on both sides
- Wide garments tray
- Automatic water inlet

Model		Voltage	Price
ASSE/155	Vacuum and blowing ironing table, electrically heated with 4kW built-in boiler and vacuum unit. Complete with 1 steam iron and cable holder rod. Carton packing included.	400V 50Hz 3ph €	4.720,00

Vacuum, blowing and steaming ironing tables



- Suitable for: Drycleaning
- Without built-in boiler
- Ironing surface 125x45x30 (point) cm
- Fixed table height at 95 cm
- Steam heated ironing surface
- Steaming, blowing and vacuum ironing surface
- Pneumatic suction/blowing exchange
- Wide garments tray
- For central steam and compressed air connections
- Without steam trap

Model		Voltage	Price
ASSE/175	Vacuum, blowing and steaming ironing table, steam heated, without built-in boiler. With built-in vacuum unit. Complete with 1 steam iron and cable holder rod. Carton packing included.	400V 50Hz 3ph	€ 5.000,00



- Suitable for: Drycleaning
- With 8 lt built-in boiler
- Ironing surface 125x45x30 (point) cm
- Fixed table height at 95 cm
- Steam heated ironing surface
- Vacuum, blowing and steaming ironing surface
- Pneumatic suction/blowing exchange
- Automatic water inlet
- Wide garments tray
- For central steam and compressed air connections
- Without steam trap

Model		Voltage	Price
ASSE/159	Vacuum, blowing and steaming ironing table, steam heated, with 6kW built-in boiler and vacuum unit. Complete with 1 steam iron and cable holder rod. Padded hand plate included. Carton packing included.	400V 50Hz 3ph	€ 7.100,00

Accessories tables mod. TAV/167 - ASSE/456 - ASSE/155 - ASSE/175 - ASSE/159	Price
Pivoting arm support - without ironing sleeve-	€ 220,00
Heated, vacuum and blowing ironing sleeve - Pivoting arm support is requested -	€ 260,00
2nd steam iron complete with connection - for mod. ASSE/159 ONLY -	€ 440,00
Lighting group with iron balancer	€ 860,00
Steam spotting gun	€ 260,00
Spray gun with support	€ 300,00

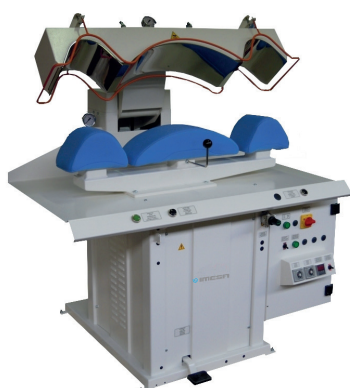
Accessories tables mod. ASSE/170B - ASSE/156B - TAV/164B	Price
Arm support and heated, vacuum and blowing ironing sleeves	€ 600,00
2nd steam iron complete with connection	€ 460,00
Lighting group with iron balancer	€ 960,00
Steam spotting gun	€ 340,00
Air-steam spray gun with support - compressed air is requested -	€ 620,00

Ironing press



- Suitable for: Drycleaning, Wetcleaning, Industrial laundries
- Universal pneumatic press
- Ironing surface 119x36 cm
- Steaming, heated and padded upper head
- Vacuum, steaming, heated and padded lower head
- Hand guard on upper head
- Upper head closure operated by two buttons
- Electronic control console

Model		Voltage	Price
PR/230B	Pneumatic universal ironing press with built-in vacuum unit. For connection to central steam and compressed air supply. Carton packing included.	230V 50Hz 1ph €	7.360,00



- Suitable for: Drycleaning, Wetcleaning
- Cuff and collar press
- Steam heated upper head made of stainless steel AISI 304
- Vacuum and heated lower head
- Hand guard on upper head
- Upper head closure operated by two buttons
- Two timers : vacuum and closing

Model		Voltage	Price
PR/270	Cuff and collar press. For connection to steam, vacuum and compressed air. Carton packing included.	230V 50Hz 1ph €	13.600,00

Accessories ironing press

	Price
Stainless steel steam generator - kW 7,5-9-12-15 (specify when ordering) for PR/230B model	€ 4.040,00
12kW-12lt steam generator for PR/270 model (specify when ordering)	€ 4.510,00
Steam/air spray gun with cable holder - for model PR/230B only	€ 860,00
Steam iron group with arm support - for model PR/230B only	€ 1.460,00
Compressor unit - for model PR/230B only	€ 2.620,00

Traditional and tensioning form finishers



- Suitable for: Hotel and Community, Drycleaning, Industrial Laundry
- Traditional steam/air form finishers for jackets, overcoats and skirts
- Standard form 135 cm height
- Fan unit included
- Automatic water inlet
- Touch screen control panel
- Complete with two manual sleeves extenders and two manual clamps

Model		Voltage		Price
MAN/196B	Form finisher without steam boiler for connection to central steam supply. Steam trap not included. Carton packing included.	400V 50Hz 3ph	€	4.200,00
MAN/190B	Form finisher equipped with pump and 9 kW/10 lt built-in steam generator. Carton packing included.	400V 50Hz 3ph	€	5.680,00



- Suitable for: Large Hotel and Community, Drycleaning, Wetcleaning
- Utility tensioning finisher for shirts, lab coats, uniform jackets, workwear
- Standard form 130 cm height
- Automatic and pneumatic functioning
- Built-in 3PH/2,2kW fan unit - adjustable ventilation -
- Heated front clamp, automatically positioned
- Pneumatic rear clamp, automatically positioned
- Mobile arms expanders, adjustable in height, with pneumatic cuff clamps.
- Three timers for programming of ironing phases: steam - steam/air - air
- Manual time operation selector
- To be connected to central air compressed
- Steam trap excluded

Models		Voltage		Price
MAN/535	Tensioning finisher for shirts, lab coats, uniform jackets, workwear without steam generator. For connection to steam and compressed air supply. Steam trap excluded. Carton packing included.	400V 50Hz 3ph	€	12.000,00
MAN/489	Tensioning finisher for shirts lab coats, uniform jackets, workwear with 24lt/12kW built-in boiler (9 or 15 kW on request) Automatic water inlet complete with water pump. For connection to compressed air supply. Carton packing included.	400V 50Hz 3ph	€	13.940,00

Shirt finisher



- Suitable for : Drycleaning, Wetcleaning
- Wet and dry shirts finisher
- Automatic and pneumatic functioning
- Shaped form with automatic size regulation
- Automatic height regulation with photocell
- Automatic horizontal and vertical tensioning and extensions
- Retractable heated front clamp made of stainless steel
- Pneumatic cuff clamps
- Microprocessor with 10 editable ironing programs
- Steam iron for touch-up

Model		Voltage	Price
MAN/079	Special shirts finisher complete with steam iron for touch-up. For connection to steam and air compressed supply. Steam trap excluded. Carton packing included	400V 50Hz 3ph	€ 29.200,00

Utility topper



- Suitable for: Hotel and Community, Drycleaning, Wetcleaning, Industrial Laundries
- Complete with two manual clamps
- Transversal tension
- Touch screen control panel

Model		Voltage	Price
TOP/187B	Utility trousers topper with built-in fan. For connection to central steam and compressed air supply. Steam trap excluded. Carton packing included.	400V 50Hz 3ph	€ 8.200,00



- Suitable for: Large Hotel and Community, Drycleaning, Wetcleaning, Industrial Laundry
- Automatic and pneumatic functioning
- Three timers: steam - sateam/air - air
- Double fixing clamps for creased and uncreased trousers
- Pneumatic waist expander

Model		Voltage	Price
TOP/263	Industrial trousers topper with built-in fan unit. For connection to central steam and compressed air supply. Steam trap excluded. Carton packing included.	400V 50Hz 3ph	€ 9.980,00

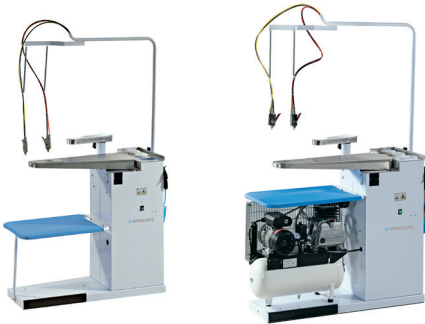
Multifunctional combined machine



- Suitable for: Self-Service Laundry, Drycleaning
- Combined machine for shirt ironing and other garments
- Form finisher with bag for shirts
- Manual cuff and collar press
- Vacuum, blowing and heated ironing table
- Complete with steam iron, sleeve arms and spray gun
- Microprocessor with editable programs

Model		Voltage	Price
EASY SHIRT	Combined machine with 14lt/9kW built in boiler complete with fan and vacuum unit. Carton packing included.	400V 50Hz 3ph	€ 15.140,00

Cold spotting machine



- Suitable for: Hotel and Community, Drycleaning, Wetcleaning, Industrial Laundries
- Stainless steel vacuum spotting surface
- Pivoting support with stainless steel vacuum spotting arm
- Two spray guns for spotting liquid with tanks
- Drying air gun

Model		Voltage	Price
SMC/184B	Cold spotting table made of stainless steel, with vacuum unit and 1HP compressor unit. Carton packing included.	400V 50Hz 3ph	€ 3.260,00
SMC/186B	Cold spotting table made of stainless steel, with vacuum unit without compressor unit. Carton packing included.		€ 2.100,00






Steam generator






- 24 lt steam boiler
- 12 kW heating element (9 or 15 kW on request)
- 16Kg/h steam production
- 5 bar pressure
- Independent electrical panels
- Two safety pressure switches (emergency and functioning)
- 80lt stainless steel condenses supply and recovery vessel

Model		Voltage	Price
S/C12-A	Electric steam generator with electronic level control and automatic water inlet with built-in pump. Carton packing included.	400V 50Hz 3ph	€ 5.600,00

TROLLEY

	Models	Price
	C 325 GRE Single slender, chromium-plated extendable clothes rail on 4 wheels - tube Ø 30 mm	€ 340,00
	ROLL BOX 4 P Vertical trolley for linen, for outside service. Frame welded to a net + textile belt	€ 420,00
	C 53 S - 830x480x620 (h) mm Small moplen trolley for dry linen. on 4 wheels including 2 caster wheels	€ 300,00
	C 51 L - 1020x630x830 (h) mm As above but with larger dimensions	€ 540,00
	C 201 S - 840x490x650 (h) mm Small aluminium trolley for wet linen. On 4 wheels including 2 caster wheels	€ 470,00
	C 201 L - 1030x630x850 (h) mm As above but with larger dimensions	€ 620,00
	C 251/2 Cleaners service trolley complete of 2 bags for dirty linen and 3 shelves for clean linen	€ 1.300,00

PACKING MACHINE

	Models	Price
	ANG 60X80 Corner packing machine for linen (polyethylene film coil)	€ 6.490,00
	IMB/W Wall-mounted packing machine for garments (polyethylene film coil)	€ 1.460,00
	IMB/V Vertical packing machine for garments (polyethylene film coil)	€ 1.800,00

General Sales Conditions

Art. 1 PRICES - Item numbers and prices are subject to change without notice. The present Price List 2022 cancels and replaces the previous ones. Prices given are selling prices to the public and are in EURO (€) to which the tax rates indicated by the applicable law will be applied. Any other item related to the installation, starting up and maintenance of machine will come counted as per GENERAL TARIFF and on the base of the SALES CONDITIONS REVERVED TO YOU.

Art. 2 ORDERS – Orders become enforceable for Imesa S.p.A. following a request for an offer (from the customer), an offer (from Imesa S.p.A.), a purchase order (from the customer) and then an order confirmation (from Imesa S.p.A.): offer, purchase order and order confirmation must have the same conditions in terms of prices, delivery time, payment terms and number and codes of the material object of the sale.

Alternatively, upon a request for an offer (from the customer), will be valid the order confirmation (issued by Imesa S.p.A.) stamped and signed for acceptance by the customer and returned to Imesa S.p.A. together with contextual bank transfer as deposit.

The contract is governed exclusively by the conditions contained in the order confirmation, as well as the general conditions of sale below.

Art. 3 PACKAGING - Prices include the standard packaging (wrapping film + wooden Pallet); for special packaging (crate, box, etc.) an extra charge will be indicated on the order confirmation form as per Price List.

Art. 4 DELIVERY TIME - Delivery date declared in the order is indicative. IMESA S.p.A. will do its best to comply with that date that has not to be considered as contractual. The customer will not be entitled to any compensation for damages and loss or to impose penalties in the event of delivery beyond the established deadline. Orders cannot be cancelled without prior written agreement with the manufacturer.

Art.5 DELIVERY TERMS - The prices of this price list are ex our factory (Ex works).All transport costs are borne by the customer, unless specific agreements are made with IMESA S.p.A.

Art. 6 PENALTIES FOR DELAY IN TAKING OVER THE GOODS- The Customer is obliged to take delivery of the goods in the manner and within the deadline indicated in the order confirmation. If the Customer does not take delivery of the goods within the aforementioned deadline, for reasons not attributable to Imesa S.p.A., the delivery shall be deemed to have been made on the scheduled date also for the effects of the passing of risks and the commencement of the guarantee and the Customer shall bear all costs that may arise from it.

If within 10 days from the written communication of "ready goods" by Imesa S.p.A. the Customer does not take delivery, Imesa S.p.A. will be entitled to charge the Customer a penalty equal to 3% of the Price of the ordered goods, produced and not withdrawn per day of delay, without prejudice to any greater damage.

Imesa S.p.A. may charge the Customer directly the amount of the penalty referred to in this clause, by simple written notice, offsetting this amount with any amounts paid as a down payment. After the lapse of the period written in Order Confirmation by the notice of ready goods Imesa S.p.A. will have the right, in addition to the payment of the penalty referred to in the previous paragraph, to terminate the contract (pursuant to art.1456 of the Italian Civil Code) and, in any event, to retain the advances/payments received by way of partial compensation for the damage, subject to further damage, in particular for loss of earnings and storage costs. However, the right of Imesa S.p.A. to avail of any remedy provided by the Law in relation to the Customer's non-fulfilment remains unaffected.

Art. 7 - PROPERTY RESERVE AND PAYMENTS - The equipment object of the sale does not become the property of the Customer before the full payment of the Price agreed in the Order Confirmation in accordance with art. 1523 and following of the Civil Code. In the event of late payment or non-payment by the Customer of invoices issued by Imesa S.p.A., as per the Order Confirmation, the latter reserves the right to apply default interest at the rate provided for by Legislative Decree 231/2002 from the date of expiry to the date of payment; the delayed or non-payment by the Customer of invoices issued by Imesa S.p.A will result in the cancellation of the existing order and the retention by Imesa S.p.A. of any advances already paid by the customer/ customer and cashed by Imesa S.p.A. So, Imesa S.p.A. has the right to suspend or terminate the current contract in addition to any other contracts in progress, without the Customer making any claims for compensation or indemnification.

Art. 8 - PRODUCTION CHANGES - The descriptions contained in this price list show the main features of the machines. Any revisions to the manufacturing processes may lead to some values or specifications changes. Based on the above, the technical data and images contained in this Price List must be intended as indicative.

IMESA S.p.A reserves the right to make changes to its appliances without prior notice, avoiding compromising the main characteristics of the same ones. Any data or value considered important during the purchase phase must be verified by the purchaser by contacting IMESA S.p.A.

Art. 9 - SPECIAL CONDITIONS - Any exceptions from the general terms and conditions agreed upon herein must be in writing.

Art. 10 - TESTING - Testing means the set of operations envisaged by the CEI 50106 regulation. These operations are performed only at our premises in CESSALTO (TV).

Art. 11 - EXPRESS TERMINATION CLAUSE - Without prejudice to further claims for damages, the Seller reserves the right to terminate the sales contract pursuant to art. 1456 of the Italian Civil Code by virtue of the simple written declaration of the Seller that he wishes to make use of this express cancellation clause, if the Customer: 1) omits or delays the payments due pursuant to art. 5; 2) delays or failure to take over, for reasons not attributable to the Seller, the products within the terms provided for by art. 6)

Art. 12 - LEGAL DOMICILE - The legal domicile of IMESA S.p.A. is intended at its registered office.

In the event that individual clauses of these General Conditions are or become invalid, the validity of the remaining clauses will remain unaffected.

Any contract concluded between Imesa S.p.A. and the Customer, including these General Conditions, will be governed by Italian law.

For any dispute arising from or in connection with these General Conditions and, in any case, with the sale of goods by Imesa s.p.A, will be the exclusive jurisdiction of the Court of Treviso. It is understood among the parties that only Imesa S.p.A., at its own discretion, will have the right to waive the exclusive jurisdiction of the Court referred to in the previous paragraph in order to take legal action against the Customer, at his domicile and at the competent court.

* In case of sale of Imesa S.p.A. machines with a different formula than the sale (renting, Pay per Use or other) the CONDITIONS OF SALE may vary from what is reported in this price list, while the conditions accepted and signed by both parties at the time of the contract are considered valid.

MANUFACTURER NOTE: The manufacturer declines all liability for any possible inaccuracies due to printing or transcription errors shown in the present price list. The manufacturer reserves the right to make any changes it deems necessary appropriate without compromising the essential characteristics of the product and without any notice.

General Warranty Conditions

The warranty on machines is valid for:

- 12 months on the range marketed with effect from the date of the DdT of IMESA S.p.A.
 - 24 months on all the IMESA production range from the date of the IMESA DdT S.p.A. For IMESA production models with Wi-Fi connection, the 24 months can start from the date of machine registration in the IMESA I'MCONNECT portal, provided that registration takes place within a maximum of 6 months from delivery or within the first 50 working cycles.
 - 36 months from the date of IMESA S.p.A. DdT for corrosion on all internal parts made of AISI 304 stainless steel : Drum and Tank.
 - 48 months from the date of IMESA S.p.A. DdT for corrosion on all external parts made of AISI 304 stainless steel: Front panel, Top and Side panels.
- The warranty is subject to the return.

Technical and maintenance operations carried out during the warranty period will not result in extensions of the same on the machine.

The warranty is NOT recognized on equipment damaged for incompetence, incorrect installation or incorrect use and on equipment modified for any reason without prior written authorization from IMESA S.p.A.

Any intervention, whatever its nature, not previously authorized in writing by Imesa S.p.A. that involves any modification of the machine or the replacement of its original state, operation or appearance, will result in the immediate forfeiture of the Guarantee.

The warranty on spare parts is subject to the return and it is NOT recognized:

- On parts subject to wear and tear (e.g. belts, insertion and ironing bands, sheets, pads and straw and rubber parts, gaskets, bellows)
- On electrical components (e.g. coils, counters, resistors, electric motors, solenoid valves in general as well as protection and safety devices)
- In the event of incorrect connection operations that can cause irreparable damage to the electronic components (e.g. inverters, electronic boards)
- On the parts that have failed due to unclear causes, or in the absence of an exhaustive report.
- If the machine, or the replacement, are not unequivocally identified (eg. the serial number has been deleted, altered and/ or removed, however unreadable).

The technical support is managed by Imesa S.p.A. and provided by technicians appointed by Imesa S.p.A..

Under no circumstances may the end user of the product carry out, directly or through different parties, repairs or replacements of the product, under penalty of the forfeiture of this Guarantee.

Imesa S.p.A. does not respond in cases of non-production, tissue damage, software programming errors and improper use of machines.

General Conditions for Warranty Replacement

The request for warranty replacement must reach IMESA S.p.A. complete with defect description and serial number of the machine concerned.

The warranty covers the replacement of spare parts, excluding labour which is always charged to the customer / user.

Installation and assistance of the part must be performed by specialized technicians appointed by IMESA S.p.A.

Spare parts to replace the presumed defective parts will be invoiced even in alleged warranty. In the event of replacement under warranty, the after-sales service of IMESA S.p.A. will authorize the issue of a subsequent credit note.

IMESA S.p.A. reserves the right to not accept the restitution of the parts to be replaced under warranty without written authorization from the after-sales service and without the serial number of the machine concerned.

In the event of failure of the warranty, an exhaustive report will be submitted to the customer.

All spare parts are classified according to the machine to which they belong. In case of a warranty claims for spare parts not corresponding to the concerned machine, the warranty contract is deemed to be cancelled and the customer charged of all expenses.

INSTRUCTIONS FOR THE DEFECTIVE RETURN OF GOODS

The package sent as replacement is complete with following documents:

- Instructions for the return of defective goods with a return authorization number.
- Adhesive coupon to be placed outside the package
- UPS form to invoice IMESA when shipping is at IMESA charge.
-

The return of the goods must take place within the terms indicated in the form contained on the package. In the event of failure to comply with that time limit, please contact the sales office.

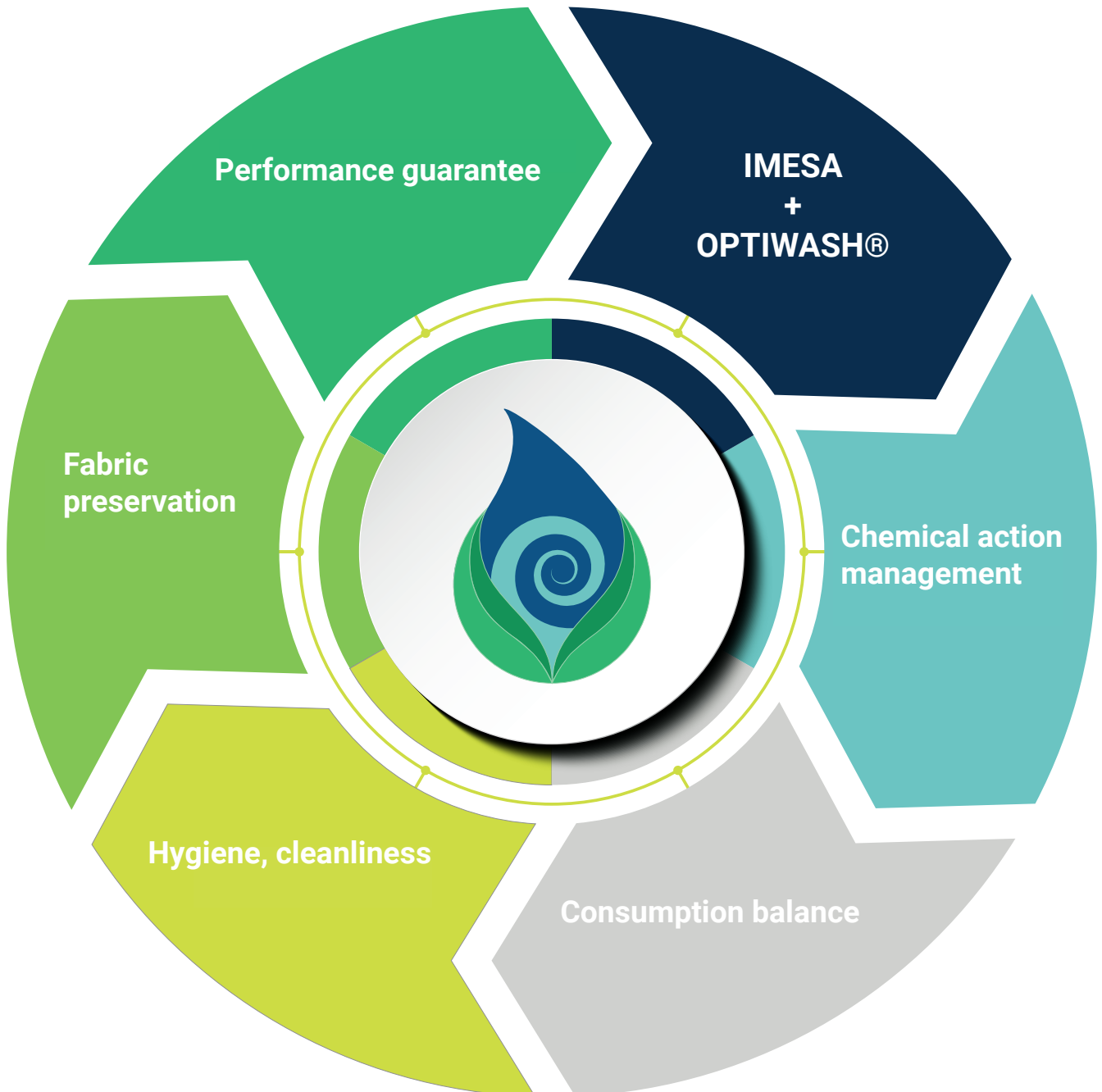
Failure to comply with the above instructions behave the non-acceptance of the goods by the warehouse of IMESA S.p.A.



OPTIWASH®

Performance optimizer by IMESA

**Take control of your laundry
and benefits from certainty of result**



OPTIWASH, the laundry detergent line by IMESA.

Why a laundry detergent range?

Because the management of the entire washing process and the choice of the right program are crucial to achieve the desired result.

Water, temperature, mechanical action, time and chemistry are the factors that interact with each other in a washing process.

The right combination of the elements, the reliability and versatility of the washing machines used, proper programming and a range of professional detergents, ensure high performance and excellent maintenance of the fabrics.

Choosing OPTIWASH means relying on knowledge.

THE OPTIWASH RANGE OF PRODUCTS

- Detergent TEN, multienzymatic deo detergent.
- Detergent DELI TEN, deo detergent for delicates.
- Additive SUPER TEN, booster with high spotting properties.
- Sanitizing OXYE TEN, the fragrant sanitizing.
- Softener FLUFFY TEN, concentrated.

DOSING PUMPS

EVO.LINE IMESA WASHING MACHINES

OPTIWASH® WASHING CYCLES



CHOOSE THE SINGLE PRODUCT OR THE PACKAGE THAT MEETS YOUR NEEDS,
OPTIWASH® IS THE SOLUTION.

LAUNDRY SOLUTIONS

IMESA S.p.A - Via degli Olmi 22 31040 Cessalto TV Italia -

www.imesa.it
info@imesa.it
tel. +39.0421.468011