

C706

Soft Serve Freezer - Single Flavour, Pump



Taylor C706 with optional C201 cart



ITEM No. _____

Model options:

- C706/1A Soft Serve Freezer (single phase)
- C706/3A Soft Serve Freezer (three phase)

(AIR cooled as standard, water cooled units are available on request)

Standard equipment:

- Top air discharge chute
- 1x Starter kit sanitiser sachets
- 1x White cleaning bucket
- 1x Tube Taylor foodsafe lubricant
- 1x Set Taylor cleaning brushes
- 1x Replacement tune up kit
- 12 Months parts & labour warranty

Optional extras:

- C201 cart with castors
- Hopper locks
- Hopper agitator (factory order)
- Ice cream cone or Flavor Burst™ decal kit
- Built-in syrup rail (requires special cart & factory order)
- Extended service contract (call for details)

Features:

Offer all the popular soft serve variations from 'Whippy style' low or non-fat ice creams to custards, yogurt, sorbet and vegan desserts.

- ♦ **Freezing Cylinder** - One, 3.2 litre
- ♦ **Hourly Production**** - 52.12 litres (approximately)
- ♦ **Mix Hopper** - One, 18.9 litre. Simplified air/mix pump delivers the precise amount of mix and air to the freezing cylinder for consistent overrun. Separate hopper refrigeration (SHR) maintains mix below 5°C during Auto and Standby modes.
- ♦ **Indicator Lights** - Mix Low light alerts operator to add mix. When the Mix Out light flashes, the unit shuts down automatically to prevent damage.
- ♦ **Electronic Controls** - Softech™ is our exclusive microprocessor based master control that regulates refrigeration by measuring product viscosity to maintain consistent quality.
- ♦ **Standby** - During long no-use periods, the standby feature maintains safe product temperatures in the mix hopper and freezing cylinder.
- ♦ **Digital Temperature Indicator** - Hopper temperature is displayed to assure safe product temperatures.
- ♦ **Door Interlock System** - Protects the operator from injury as the beater will not operate without the dispensing door in place.
- ♦ **Flavor Burst™ FB80 Compatible** (call for details)



Taylor UK
Catering Equipment Specialists

Taylor UK (a division of HTG Trading Ltd)
106 Claydon Business Park, Gt. Blakenham,
Ipswich, Suffolk, IP6 0NL, United Kingdom
0800 838 896 - sales@taylor-company.co.uk
www.taylor-company.co.uk

Due to continual research and development, these specifications are subject to change without notification - Jan 2020

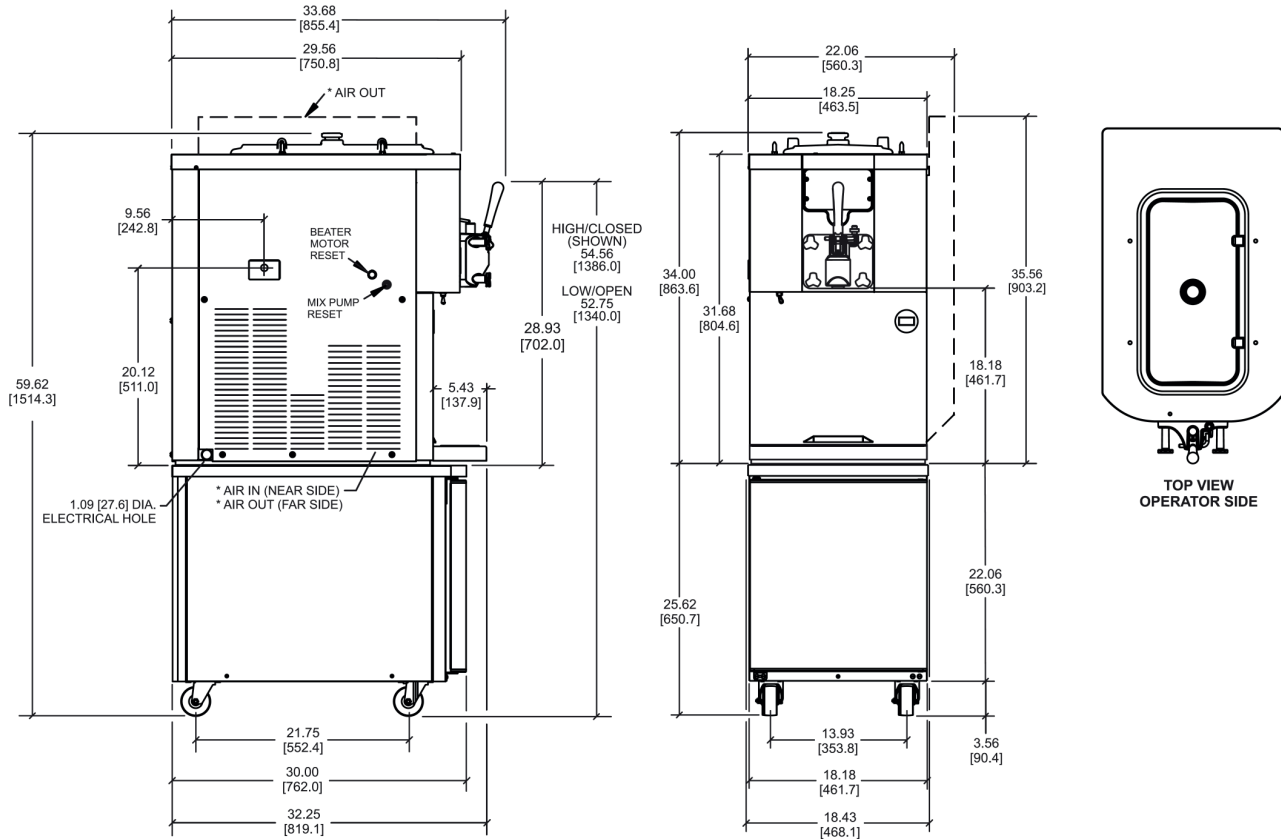
C706



Soft Serve Freezer - Single Flavour, Pump

ITEM No. _____

Section view: (Dimensions shown in brackets in mm)



Shown with optional C201 cart.

Taylor C706	SINGLE PHASE	THREE PHASE
External dimensions (WxDxH)	561 x 857 x 864 mm	
External dimensions (WxDxH) on Cart	561 x 857 x 1554 mm	
Net weight / crated weight (freezer only)	195 Kg / 199 Kg	
Wall clearance* (sides/back)	150 mm / 0 mm	
Soft serve freezers are NOT designed for built-in installation		
Refrigeration system - Main	9,500 BTU/hr	
Refrigeration system - Hopper	400 BTU/hr	
Beater motor (No./Power)	1 - 1.5 HP	
Cooling	Air (water cooled available on request)	
Approximate hourly production**	51.12 ltr	
Voltage	230v / 50Hz / 1Ph	400v / 50Hz / 3Ph
Minimum amp draw	22 amps	9 amps per phase
Circuit breaker	32 amp	16 amp
Isolator socket	32 amp (1P+N+E) 	32 amp (3P+N+E)



Shown with top air discharge chute.

*Minimum air clearances **MUST** be met to assure adequate airflow for optimum performance of air cooled machines. Place the back of the unit against a wall to prevent recirculation of warm air. No air gap is required on right of machine when discharge chute is fitted.

**Hourly production figures are approximate and based on optimum operating conditions. Product type, ambient air temperature and air flow will effect the production capacity.

•A dedicated power supply is required for safe operation. Taylor equipment should never be operated on any form of extension lead, please consult a qualified electrician for correct installation advice.

Data for air cooled units.



Taylor UK (a division of HTG Trading Ltd)
106 Claydon Business Park, Gt. Blakenham,
Ipswich, Suffolk, IP6 0NL, United Kingdom
0800 838 896 - sales@taylor-company.co.uk
www.taylor-company.co.uk

Due to continual research and development, these specifications are subject to change without notification - Jan 2020