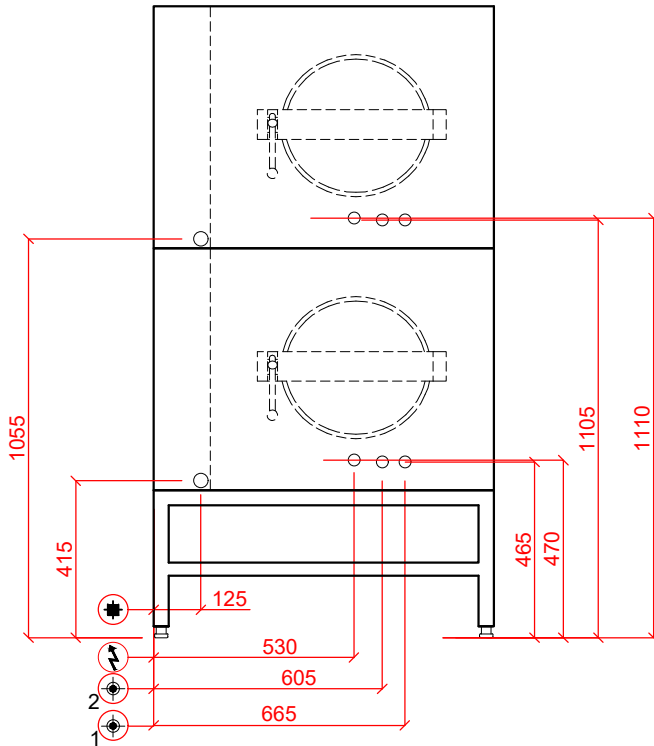
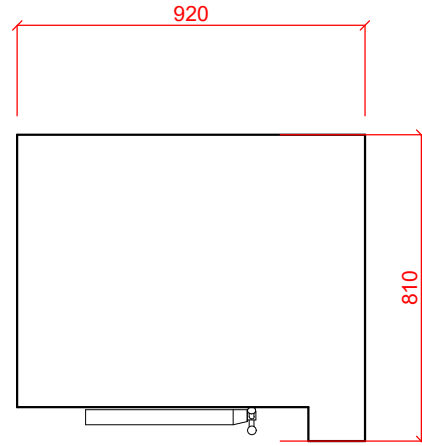


Pressure Steamer

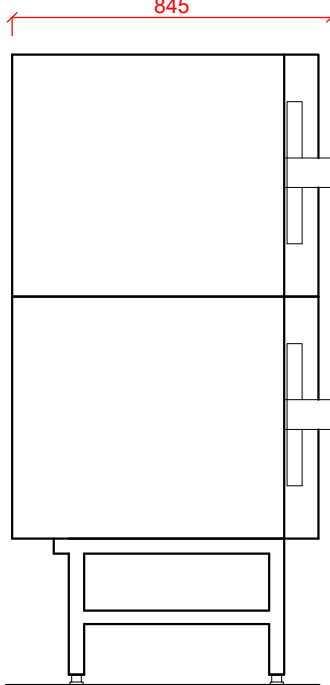
305TB2-10



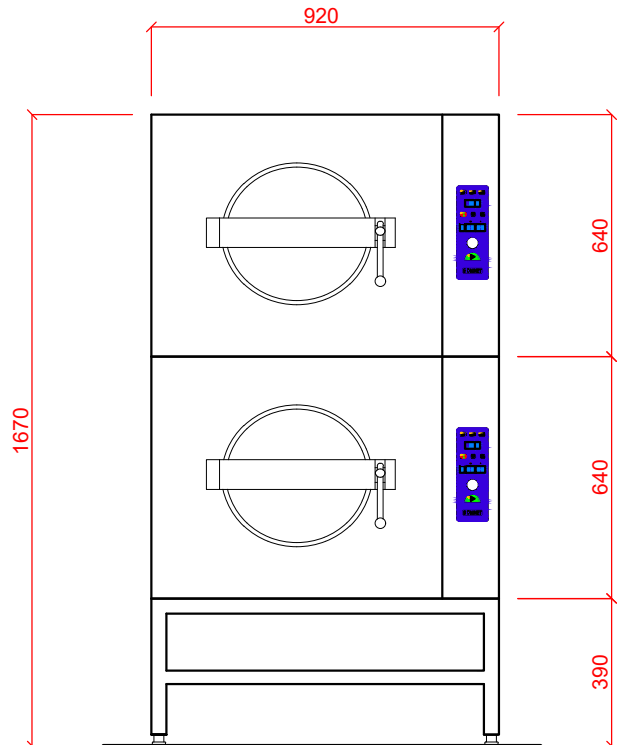
VIEW FROM BACK  
ALL SERVICES ENTER FROM BACK OF UNIT



PLAN ELEVATION



SIDE ELEVATION



FRONT ELEVATION

**SPECIAL NOTE:**

**RECOMMENDED TO BE USED WITH A WATER TREATMENT SYSTEM.**

**COOKING PRESSURE - 0, 0.5 and 1.0 Bar**

**THERMAL RADIATION - APPROXIMATELY 1.5 kW AT DOOR, BUT REMAINDER NEGLIGIBLE AS MACHINE HAS INSULATED PANELS.**

Device Number	Description	Electric	Notes
305TB2-10	Twin Stacked Pressure Steamer Each with Single Chamber to suit GN 1/1	400/50/3 + N + E - 2 x 27.0kW (switchable to 2 x 18kW) Fuse at 50A/phase(32A/phase)	ELECTRICAL CONNECTION 1 SOFT WATER INLET 3/4" BSP 2 WATER INLET 3/4" BSP DRAIN 1" BSP WATER CONDENSE BOX 3/4" BSP

**NOTE:**  
Water Inlet Pressure min 1.7bar max 10bar  
Water supply is via internal WRAS approved valve.

EST WEIGHT 200Kgs  
ALL SERVICES ENTER FROM BELOW UNIT

PLOT SCALE: 1:20 @ A4